

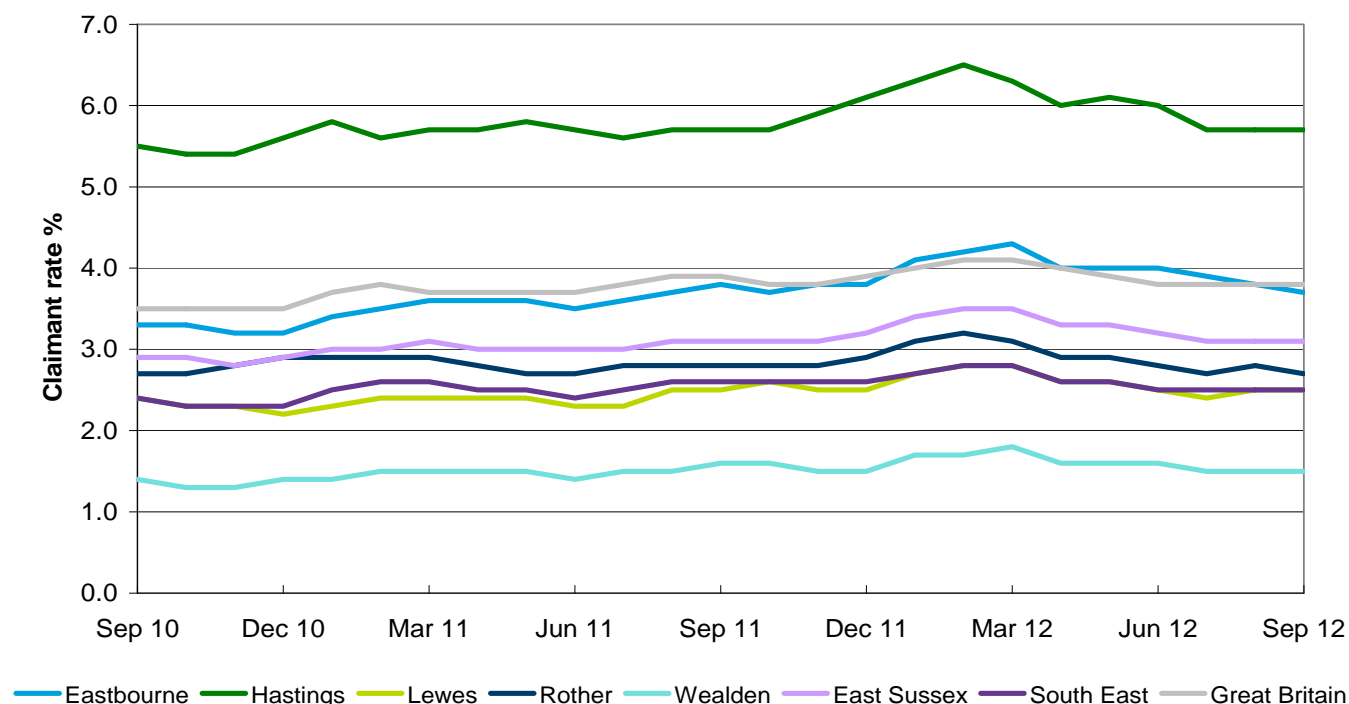
JSA claimant count unemployment . . . in brief

October 2012

The number of people in East Sussex who are unemployed and claiming Job Seekers Allowance (JSA) rose in September 2012, in contrast to regional and national trends. While the number of younger claimants fell there was a rise among young people claiming long term.

- In September 2012, the number of people claiming JSA in East Sussex increased by 34 claimants or 0.4% to 9,360. This compares to a fall of 54 claimants (0.6%) in the previous month and a monthly rise of 1.3% (126 claimants) in September 2011.
- Claimant numbers in the county are now 1.4% lower than in September 2011 when there were 9,491 claimants, an annual decrease of 131 claimants.
- The claimant count rate in East Sussex remained at 3.1% in September and remains higher than the South East rate (2.5%), but lower than the average for Great Britain which also remained at 3.8%.
- There are significant variations in the claimant count across and within the districts/boroughs of East Sussex. In September 2012, claimant numbers decreased in Eastbourne (by 39) and Rother (11) and but rose in Wealden (by 44), Hastings (28) and Lewes (12). Hastings has the highest number of claimants (3,136) and claimant rate (5.7%) in the county. Additional analysis can be found overleaf.
- The number of young people (aged 16-24) claiming JSA declined by 25, but the number of young people claiming long-term (over one year) rose by 20.

JSA claimant count rate by district, September 2010 - September 2012



Across the county

- **Eastbourne:** claimant numbers fell by 39 to 2,157 in September, while the claimant rate also decreased to 3.7%, and is now below the national average. Devonshire ward has the highest number of claimants in the county at 565, and numbers rose slightly in September (by 6) while the claimant rate remained at 6.5%.

Sovereign saw the largest ward level fall in Eastbourne of 29, which pushed the rate down to 2.2%. In Langney there was also a reduction of 20 and the rate fell to 3.6%. Hampden Park also saw a fall in numbers of 15, pushing the rate down to 4.8%. Hampden Park and Devonshire are now the only wards in Eastbourne to have a claimant rate above the national average (3.8%).

- **Hastings:** saw a rise in claimant numbers of 28 to 3,136 while the rate remained at 5.7%. The borough has the second highest claimant rate (behind Thanet in Kent) of all districts and unitary authorities in the South East.

Claimant numbers in Central St Leonards fell by 12 and the rate fell to 12.5% but the ward still has the highest claimant rate in the county and ranks as the fourth highest of all wards in the South East. However in Gensing numbers rose by 15 and the rate rose to 9.1%. Other wards seeing significant increases include West St Leonards (14) and Silverhill (12). Gensing and Castle, where a marginal fall in numbers (3) caused the rate to fall to 8.9%, are also among the 10 wards with the highest rates in the region.

- **Lewes:** saw claimant numbers rise by 12 to 1,422 in September while the claimant rate remained at 2.5%. The overall claimant rate in

Newhaven increased to 3.6% in the town, after numbers increased in Newhaven Denton and Meeching by 10, although in Newhaven Valley a slight fall of 4 pushed the rate down to 4.2%. This ward still has the highest rate in the district.

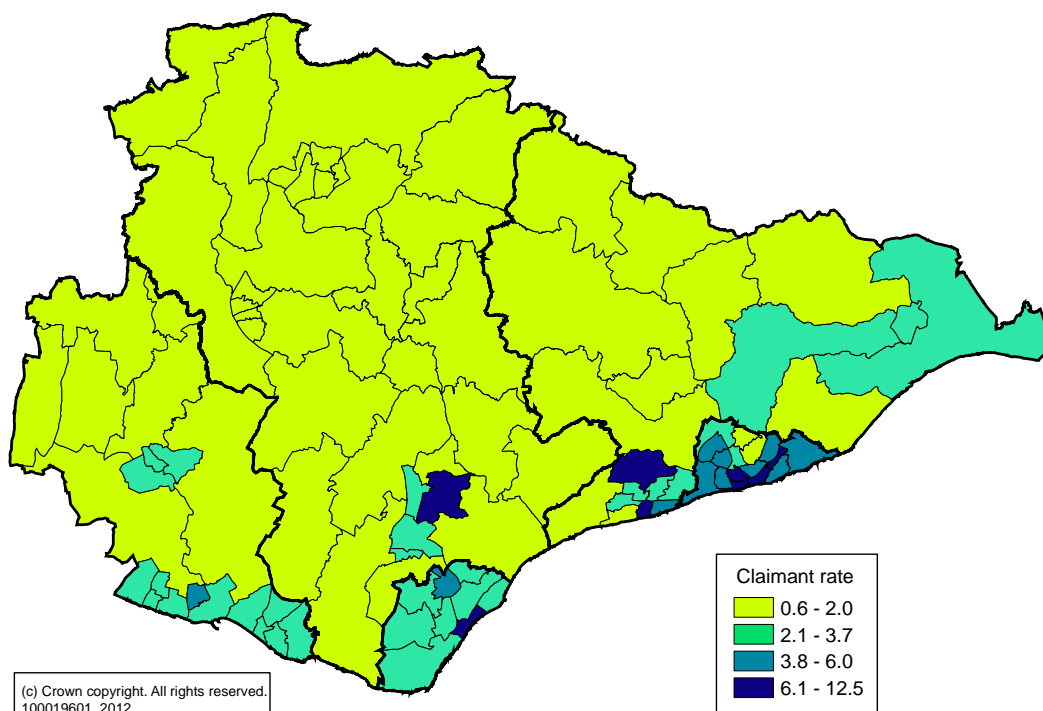
Elsewhere in Lewes, Peacehaven East saw numbers rise by 16 pushing the rate up to 3.3%. The overall rate for Lewes Town remained at 2.9%, but while numbers fell in Priory (by 10) and Castle wards (3), there was an increase in Lewes Bridge of 10.

- **Rother:** claimant numbers fell by 11 in September to 1,352, while the claimant rate declined to 2.7%. Bexhill Sackville ward saw the biggest increase of 10 claimants pushing the rate up to 4.2%.

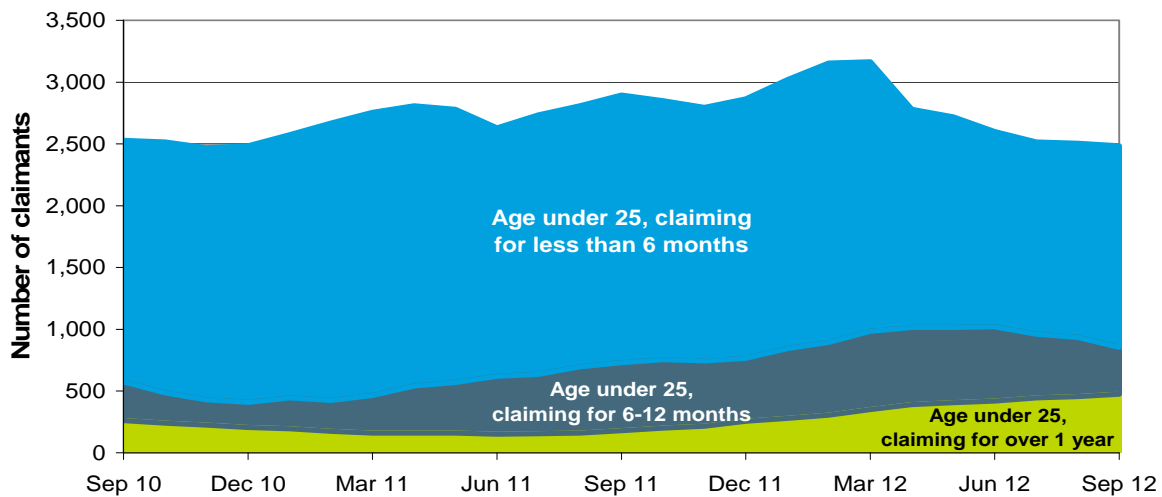
Overall claimant numbers in Bexhill fell by 10 and the rate for the town decreased to 3.9% but remains just above the national average. In Bexhill Central a decrease in numbers of 12 caused the rate to decline from 6.7% to 6.3%, while Bexhill Sidley saw a slight decline in the rate to 6.6%. Together with Sackville, these three wards have the highest rates in Rother and are the only wards with rates above the national average.

- **Wealden:** claimant numbers increased by 44 to 1,293 in September, and the rate remained at 1.5%. The greatest ward level fall was seen in Crowborough Jarvis Brook (9). Hailsham East saw a rise in numbers of 5, pushing the rate up to 6.3%, and it remains the only ward in Wealden to have a higher claimant rate than the national average. The overall rate for Hailsham also rose to 3.0%.

JSA claimant count rate by ward, September 2012



Duration of claim for under 25 year olds, September 2010 to September 2012



Duration of claim, age and gender

- Duration of claim:** The number of short-term claimants (less than 6 months) increased in September by 180. Numbers fell in Eastbourne but rose in all other districts, by 75 in Hastings, 60 in Wealden and 55 in Lewes. However the number of people claiming for 6 months to one year, was down by 215. The number of people claiming for over one year continues to rise, and was up by 45, reaching 2,605 in September 2012, the highest level since August 1997. Long term claimant numbers rose most in Hastings, by 20.

46% of all claimants have been claiming for more than six months, and more than a quarter of all claimants (28%) have been claiming for more than a year. Among young people aged 16-24, almost one in five claimants have been claiming for more than a year, up from just 6% in September 2011 (see chart above).

- Age:** Across the county, there was an increase of 45 among the oldest age group (aged 45-64) but falls in the number of young claimants aged 16-24 and those aged 25-44. The largest fall was among younger people (16-24) where numbers decreased by 25. Among the middle age range (25-44), claimant numbers fell by 15.

The number of younger claimants (aged 16-24) fell most in Hastings (by 25) but also in Eastbourne (15) and Rother (10). Numbers rose in Lewes, (20) and in Wealden (10). The claimant rate among young people (aged 16-24) in East Sussex remained at 5.1% while the rate dropped to 8.1% in Hastings.

The claimant rate is particularly high among young males aged 16-24, and in September this decreased to 6.7% in the county. With one in nine young men in Hastings claiming, it has the highest claimant rate for this group but this also fell to 11.1% in September, after numbers declined by 20.

- Gender:** In September 2012 the number of male claimants fell by 6 to 6,256, while female claimant numbers were up by 40 to 3,104.

The claimant rate for males, which remained at 4.2%, is just over double the rate for females (which remained at 2.0%). The number of male claimants fell most in Eastbourne (by 37) and were also down marginally in Lewes and Hastings. However male claimant numbers rose in Wealden by 32, and marginally in Rother (4). Among female claimants, numbers rose most in Hastings (by 29) and also in Lewes (16) and Wealden (12). In Rother, female claimants fell by 15 and in Eastbourne numbers were stable (down 2).

Female claimants now make up one third of all claimants. The district with the highest proportion of female claimants is Lewes at 36%.

Other out-of-work benefits

JSA is claimed by those who are actively seeking work and meet certain eligibility criteria. Other state benefits are available to those who are unable to work, either due to sickness, disability or because they are caring for others. In February 2012 almost 36,000 people, or one in nine of the county's working age population, were claiming 'out-of-work' benefits, including JSA, Income Support, Incapacity Benefit (IB) and Employment and Support Allowance (ESA). This ranged from less than 7% in Wealden (5,740 claimants) to 20% in Hastings (10,890 claimants), or one in five working age people.

More than half (56%) of those on out of work benefits were receiving IB/ESA, whereas 29% were claiming JSA.

More detailed analysis of out-of-work benefits is published on a quarterly basis and the next detailed briefing is due in November 2012.

JSA claimant counts and rates

	Claimant rate (%)			Number of claimants			Change since September 2011	
	Jul 12	Aug 12	Sep 12	Jul 12	Aug 12	Sep 12	Actual	% change
Eastbourne	3.9	3.8	3.7	2,246	2,196	2,157	-20	-0.9
Hastings	5.7	5.7	5.7	3,155	3,108	3,136	16	0.5
Lewes	2.4	2.5	2.5	1,393	1,410	1,422	-35	-2.4
Rother	2.7	2.8	2.7	1,324	1,363	1,352	-42	-3.0
Wealden	1.5	1.5	1.5	1,262	1,249	1,293	-50	-3.7
East Sussex	3.1	3.1	3.1	9,380	9,326	9,360	-131	-1.4
South East	2.5	2.5	2.5	136,521	136,026	134,136	-6,247	-4.4
Great Britain	3.8	3.8	3.8	1,508,910	1,505,212	1,488,740	-28,457	-1.9

Further information

The Job Seekers Allowance (JSA) claimant count records the number of people of working age claiming JSA and National Insurance credits at Jobcentre Plus offices. Statistics are published monthly on the Nomis website. Nomis also publish quarterly data from the Department for Work and Pensions (DWP), which gives details of claimants of all benefits including those paid to people who are out of work.

The JSA claimant rate is defined as the number of claimants resident in an area expressed as a percentage of the working age population resident in that area. Working age was re-defined in 2010 as 'all people aged 16-64' to reflect changes to the female pension age. The working age population figures are derived from Office for National Statistics (ONS) mid-year population estimates.

The JSA claimant count is often used as an indicative measure of unemployment as it provides frequently updated information for a range of geographies. Care should be taken not to confuse this with ONS official labour market statistics which use the International Labour Organisation's definition of unemployment which includes those aged 16 plus who are out of work, but actively seeking work.

- Full claimant count data and State Benefits data provided by the Department for Work and Pensions is published on the [Nomis website](#).
- Detailed statistics for JSA claimant counts by [ward](#), [gender](#), [age](#) and [duration of claim](#) and also for [out of work benefits](#) are available on East Sussex in Figures.
- For further information please contact Lenna Santamaría on 01273 481619 or mariahelena.santamaria@eastsussex.gov.uk; or Helen Joslin-Allen on 01273 481346 or helen.joslin-allen@eastsussex.gov.uk

Contact details

The Research and Information Team supports the strategic planning activities of the County Council's Economy, Transport and Environment Department. It also provides intelligence to assist with service planning and strategy development across East Sussex generally and manages the East Sussex in Figures (ESiF) data observatory.

ESiF is a web-based information system that contains detailed, up-to-date and reliable information on a very wide range of topics. It is free and very easy to use and puts individual users in control. ESiF lets you specify exactly what data you want to see (for the places and time periods you are interested in) and how you want to view it (as a table, chart or map).

Visit www.eastsussexinfigures.org.uk or e-mail esif@eastsussex.gov.uk for more information.