

Deprivation in Hastings in 2010

April 2011

Hastings has become relatively more deprived since the last Indices of Deprivation were released in 2007. Three quarters of LSOAs in Hastings rank lower than they did in the previous release, and Hastings now ranks 19 out of all 326 Local Authorities in England for its average deprivation score, compared to 31 (out of 354) in 2007.

- The English Indices of Deprivation measure relative levels of deprivation in small areas called Lower layer super output areas (LSOAs).
- The Index of Multiple Deprivation 2010 (IMD 2010) is an overall measure of multiple deprivation experienced by people living in an area, and the new release updates the English Indices of Deprivation 2007.
- Hastings has 2 LSOAs which are amongst the most deprived 1% in the country, in Baird and Tressell wards. Another 13 are in the most deprived 10% LSOAs: 4 in Central St Leonards, 3 in Castle, 2 each in Hollington and Gensing, and 1 each in Ore and Wishing Tree.
- In Hastings, 40 out of 53 LSOAs (75%) rank worse in 2010 than in 2007 (see chart below).
- 3 LSOAs in Hastings feature among the worst 10 LSOAs in the Local Enterprise Partnership (LEP) area: Baird, Tressell and Central St Leonards.

Hastings LSOAs among the most deprived 10% in England

LSOA name	Ward name	IMD 2010 Score	National rank of IMD 2010 score*	National rank of IMD 2007 score*	Rank of Income score (2010)*	Rank of employment score (2010)*
Hastings 005A	Baird	72.81	138	207	102	177
Hastings 005D	Tressell	69.70	248	480	153	444
Hastings 011A	Central St Leonards	67.70	331	1265	1197	170
Hastings 011E	Gensing	61.98	665	1016	3226	382
Hastings 009B	Castle	60.68	766	1539	3067	395
Hastings 011B	Central St Leonards	58.62	966	750	1470	1102
Hastings 008E	Gensing	57.91	1051	2474	1714	799
Hastings 003E	Wishing Tree	57.89	1057	1963	1515	389
Hastings 011C	Central St Leonards	57.29	1134	1286	3084	1294
Hastings 004B	Ore	53.76	1579	2475	1067	1693
Hastings 003C	Hollington	52.63	1746	2967	1460	1531
Hastings 003A	Hollington	50.97	2009	3180	1814	1919
Hastings 009C	Castle	49.33	2319	3526	3699	1772
Hastings 011D	Central St Leonards	48.77	2425	3135	5793	2829
Hastings 009A	Castle	47.73	2621	2513	5944	3423

LSOAs in bold are ranked among the 10 most deprived in the LEP.

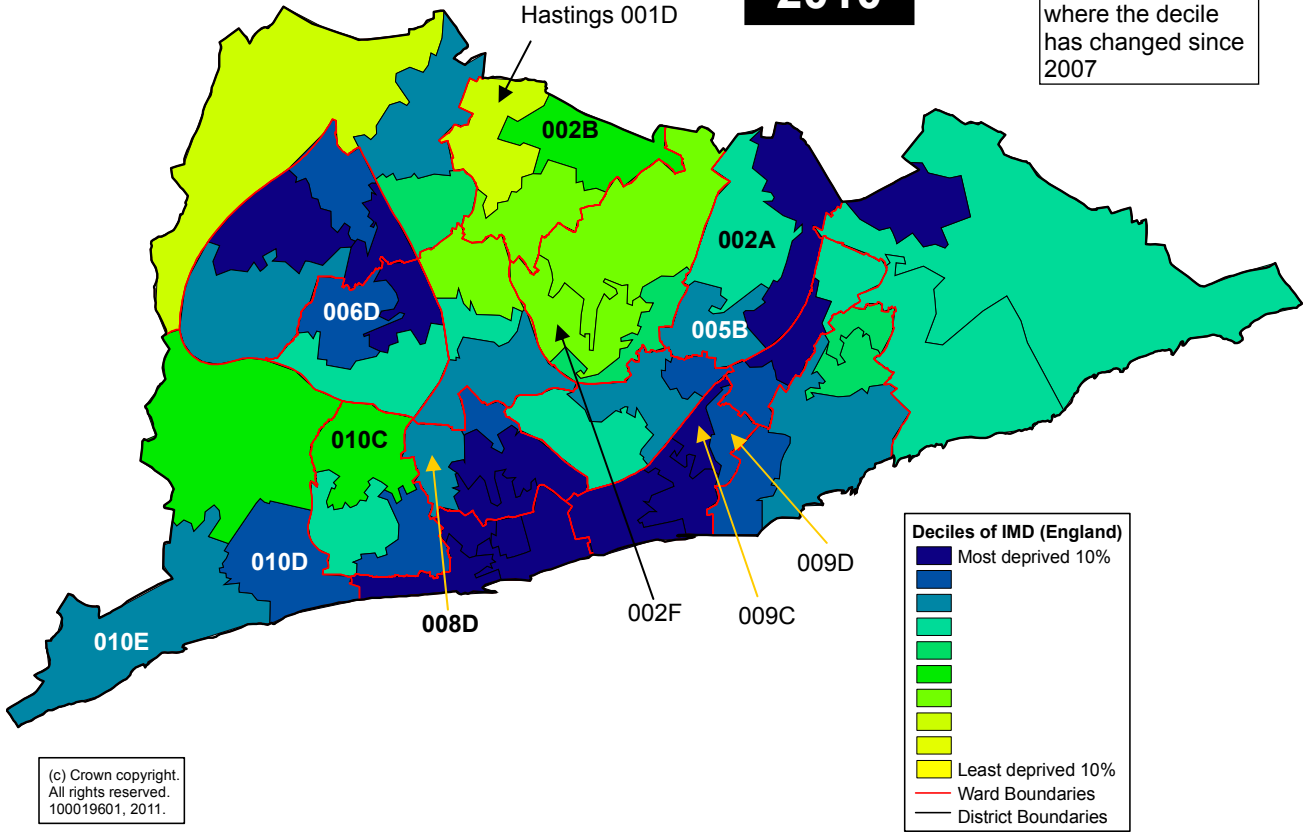
* where 1 is the most deprived and 32,482 is the least deprived

Deprivation in Hastings IMD

Hastings Borough Super Output Areas (lower layer)
Indices of Deprivation 2010

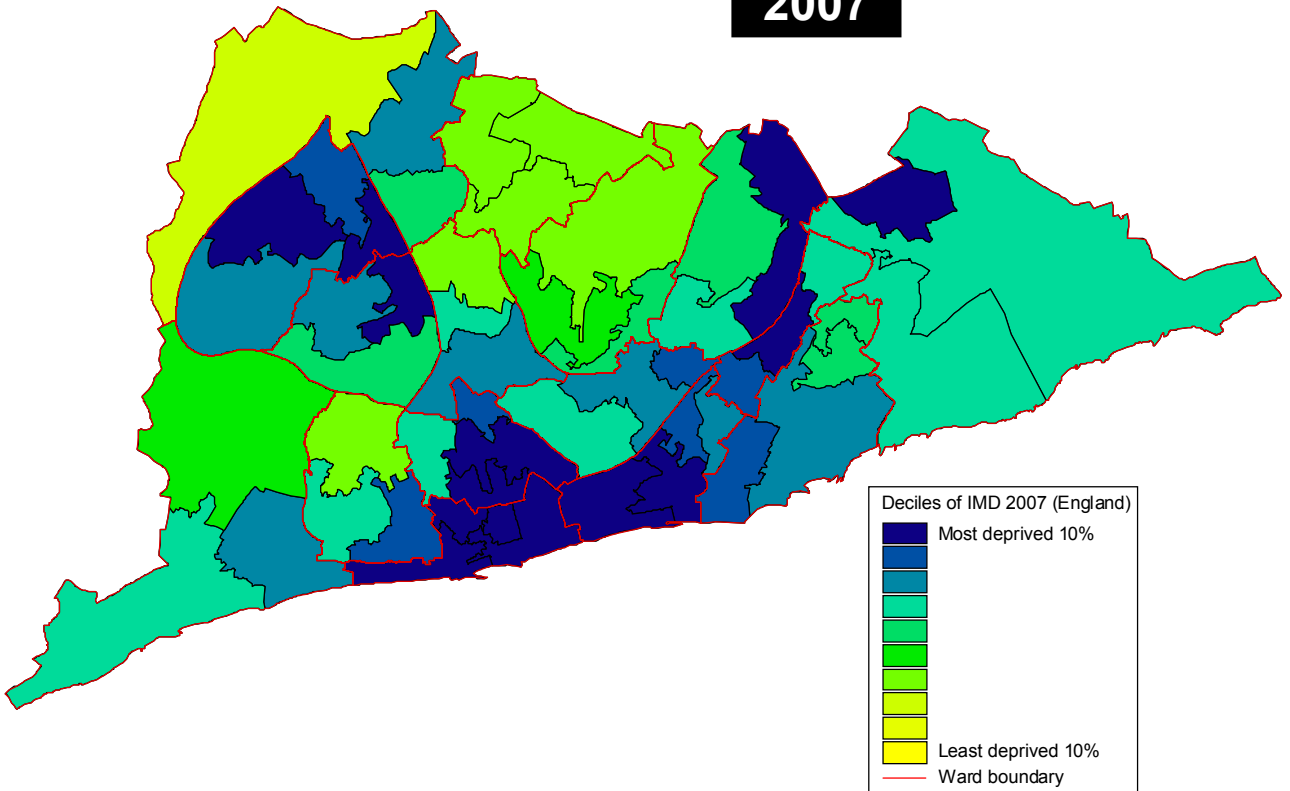
2010

LSOAs labelled where the decile has changed since 2007

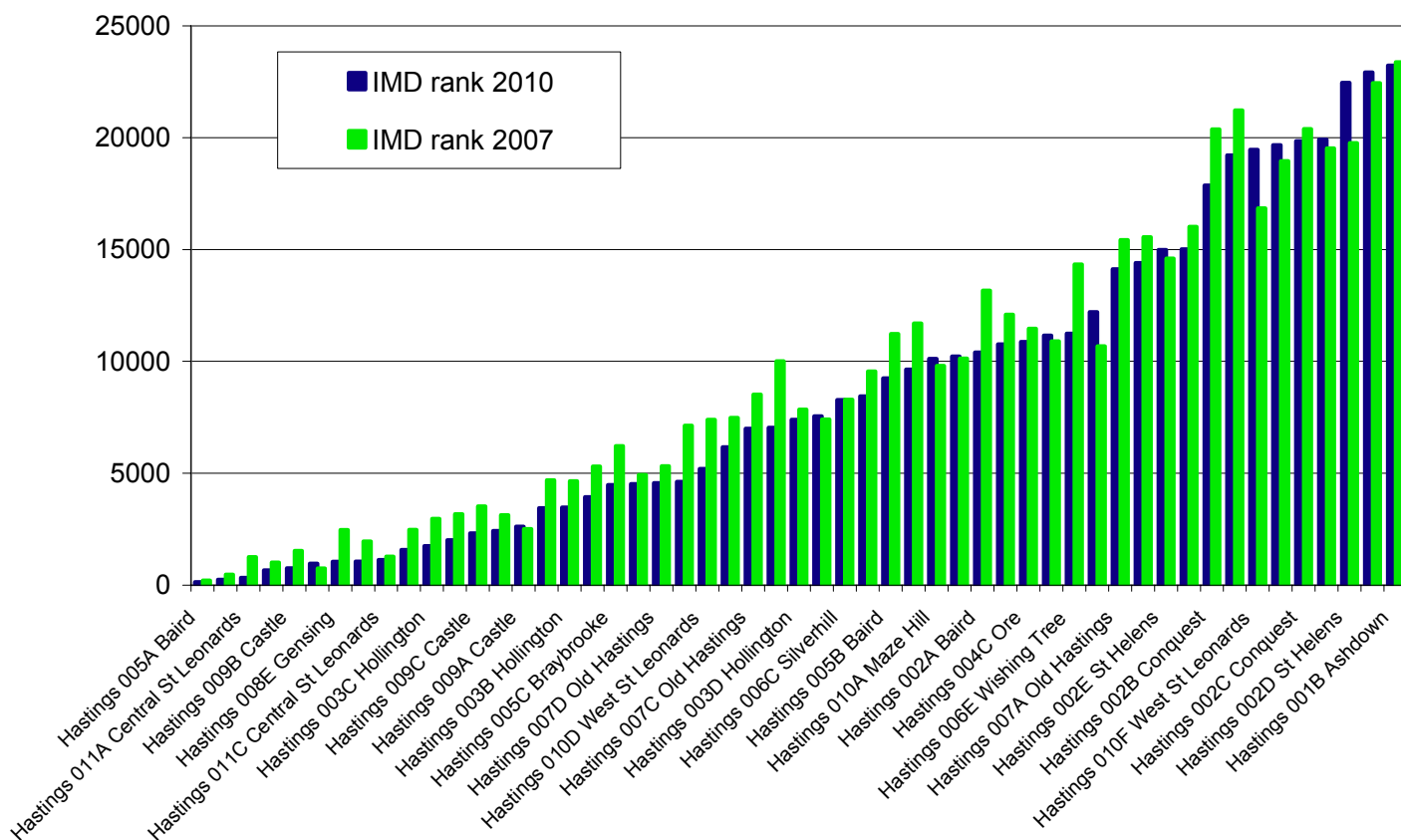


Deprivation in Hastings IMD

2007



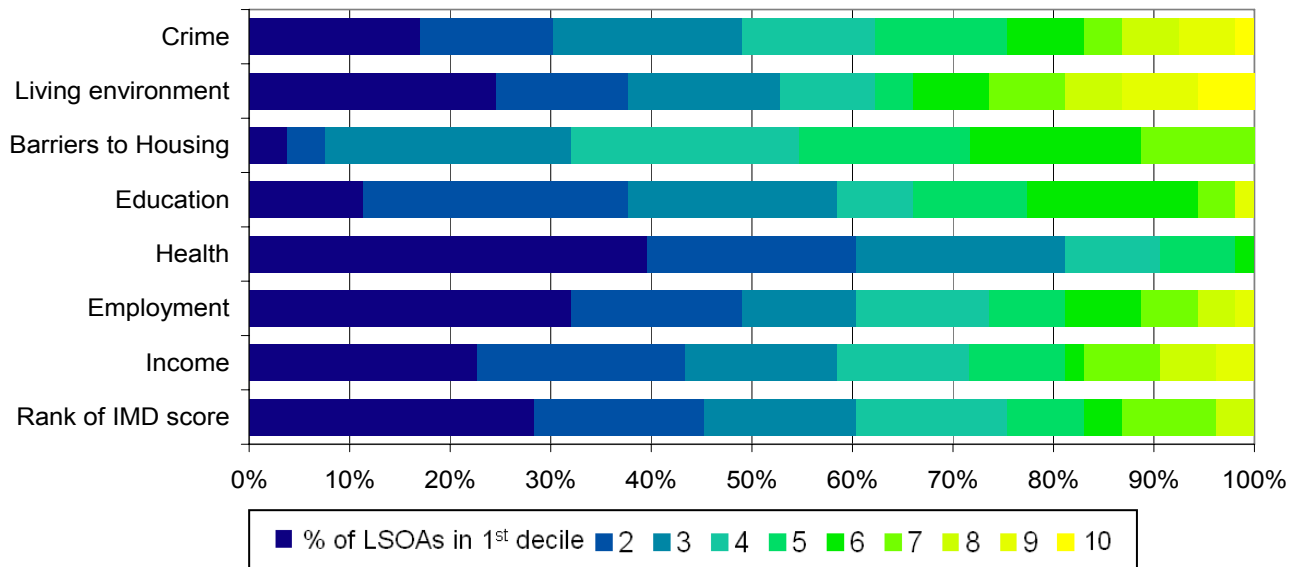
Deprivation rankings for Hastings LSOAs in 2007 and 2010



Additional points about Hastings deprivation

- Many parts of Hastings rank as highly deprived across a number of different deprivation domains. For example, in Central St Leonards every LSOA scores at least in the worst 20% in England for each domain except Barriers to Housing and services.
- 28% of Hastings LSOAs are among the worst 10% of deprived areas in England. 45% fall into the most deprived 20% in England.
- The domain which shows the greatest evidence of deprivation is Health and Disability deprivation. 40% of LSOAs fall into the most deprived 10% in England, and 60% of LSOAs into the most deprived 20%. Every LSOA in Central St Leonards, Castle and Gensing wards ranked among the most deprived 10% in the country for Health.
- Hastings has no LSOAs that rank in the least deprived 20% in England. 1 in 6 LSOAs fall into the least deprived 50% in England – 9 in total.
- While some wards are ranked as particularly deprived in the Living environment domain, 3 LSOAs ranked among the *least* deprived 5% in England for this domain, including 2 in Hollington ward (1 of which is otherwise among the poorest 10% for overall IMD score).

Proportion of LSOAs by decile – domains of Indices of Deprivation 2010



Further information

38 separate indicators are used, organised across 7 distinct deprivation domains which can be combined, using the appropriate weights to calculate the IMD 2010. Most of the indicators used in these statistics are from 2008.

The differences in results between 2007 and 2010 reflect how an area has fared relative to others across England with similar levels of deprivation. A local neighbourhood could have improved in real-terms (eg. lower levels of unemployment, higher incomes, higher skill levels, lower crime rates, better environment, etc.), and may have improved faster than the average. However, if other areas with similar levels of deprivation have done slightly better, the local neighbourhood will score as more deprived in 2010 than 2007. It is therefore very important to look at other measures alongside the IMD 2010 to understand how local areas are changing.

- Full details of the methodology used, data for all LSOAs in England, and guidance on the use of the data for this year's release of the 2010 Indices of Deprivation is available from [CLG](#)
- Detailed statistics for the Indices of Deprivation 2010 and data for previous releases ID 2007 and ID 2004 are available on [East Sussex in Figures](#).
- For further information please contact Lenna Santamaría on 01273 481619 or mariahelena.santamaria@eastsussex.gov.uk; or Helen Joslin-Allen on 01273 481346 or helen.joslin-allen@eastsussex.gov.uk

Contact details

The Research and Information Team supports the strategic planning activities of the County Council's Economy, Transport and Environment Department. It also provides intelligence to assist with service planning and strategy development across East Sussex generally and manages the East Sussex in Figures (ESiF) data observatory.

ESiF is a web-based information system that contains detailed, up-to-date and reliable information on a very wide range of topics. It is free and very easy to use and puts individual users in control. ESiF lets you specify exactly what data you want to see (for the places and time periods you are interested in) and how you want to view it (as a table, chart or map).

Visit www.eastsussexinfigures.org.uk or e-mail esif@eastsussex.gov.uk for more information.