

Wealden Integrated Community Team Population Profile Pack

November 2023

November 2023



LSOA (2021) based ICT boundaries.
© Stadia Maps; © OpenStreetMap contributors

Introduction

16 geographically based Integrated Community Teams (ICTs) across Brighton and Hove, West and East Sussex have now been agreed.

The ICT Programme Team have since implemented an ICT Data Group, enabling ICB, Public Health, Local Authority, VCSE and wider stakeholders to meet and collaborate regularly in the development and design of Sussex ICT data core profiles.

The Sussex ICT model, will be driven by data and reflective of population needs. To do this effectively we need to access a variety of data sets that enable us to understand each of the ICTs' local demographics, health needs, social determinants and wider determinants of health.

Different data sources complimented by Local Knowledge and Community Insight will be key in highlighting specific needs and challenges faced by each ICTs population. This will allow us to construct the core offer that will be delivered by ICT delivery teams, design how these teams need to be configured and what might need further local tailoring due to marked differences in population need.

These opening ICT data packs are intended to set the scene for the ICTs. Whilst they alone will not provide the final answer, they are designed to help stimulate the questions which will. After initial release in December, the packs will develop further in response to feedback to help support the ICTs in their development.

Better health and care for all

Draft Headline Findings

- Around 160,200 people live in Wealden, 2nd largest ICT in Sussex and one of the least densely populated.
- Population increase, which is above the national average, has mainly come from in-migration, with fewer births than deaths in the area.
- Older age profile, fewer 20 to 45 year olds, more older people living alone and more self-funded care home residents.
- Less ethnically diverse than the national average, with fewer LGB+ people, and more veterans.
- Housing costs are high relative to earnings in Wealden ICT.
- Four Core20 neighbourhoods (representing the most deprived 20% of neighbourhoods nationally) in Hailsham with a population of approximately 6,100.
- Compared to England, Life expectancy is significantly better and amongst the highest in Sussex ICT area. Higher winter mortality index compared to England.
- Top 5 causes of the greatest burdens of ill-health in East Sussex are: heart disease, low back pain, COPD, lung cancer, and stroke.
- 1 in 4 adults are classified as obese.
- Higher rates of hypertension and depression.
- High admissions for falls injuries for older people.

Draft Headline Findings continued...

Compared to Sussex:

- Greater increase in GP registered patients
- Fewer patients with learning disabilities receiving an annual health check and fewer dementia patients with annual care plans
- More patients with chronic kidney disease to be managed in primary care
- Lower uptake of flu vaccination
- More attendances at urgent treatment centres, more same day urgent care & A&E attendances and more emergency admissions.
- Lower referrals to specialist consultants for advice and guidance when considering referrals from primary care.
- Longer waits at Princess Royal Hospital in Haywards heath, whilst shorter waits at Eastbourne District General Hospital.
- More outpatient procedures, more daycase and overnight inpatient stays, however fewer long lengths of stay.
- More community nursing contacts

Compared to East Sussex:

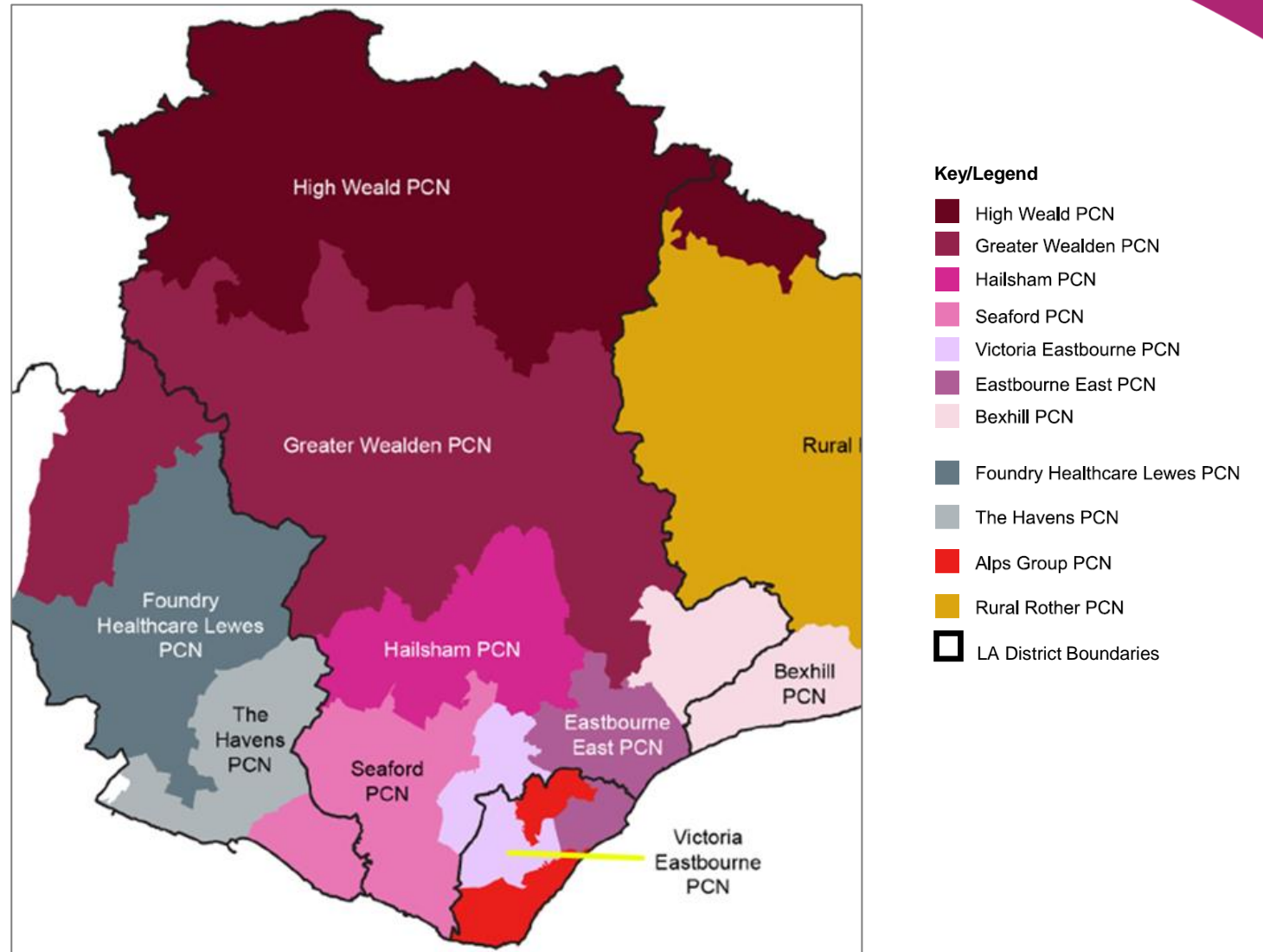
- Fewer carers report having enough social contact.

Wealden ICT Geography

The geography of the ICT is not an exact match between Local Authority District and NHS practice/PCN catchment.

By general rule the slides on the health of the population will be split by District and those slides on use of healthcare services split by GP/PCN registered population.

Where slides deviate from this it is noted



Better health and care for all

Summary Contents 1

Section	Slide	Contents
Who lives here	Who lives in the ICT	Population, increases, reductions, broad age band %s
	Key Demographics	Key demographic groups within the ICT
	Population change	Age-sex profile and expected increase, including households
	Population Projections	An ageing population
Building blocks of health	Introduction	What do we mean by the building blocks of health
	Deprivation	IMD, Core20, Child poverty, Benefits, Poverty, Earnings
	Building blocks of health	Housing, Education, Employment, Crime
What services are within the ICT	Map of services	Location of services within the ICT geography

Better health and care for all

Summary Contents 2

Section	Slide	Contents
The Health of the Population	Health and Wellbeing across the life course	Headline summary of key indicators which are covered in more detail in the next 3 slides
	Main Causes of ill health, life expectancy and inequalities	Life expectancy, mortality and inequality
	Main Causes contributing to the gap in life expectancy	Causes of inequality in life expectancy
	Key risk factors for main causes of death	Risk factors are behind the main causes of death
	Starting Well	Outcomes and factors affecting them at the start of life
	Living Well	Outcomes and factors affecting them during Adult life
	Ageing Well	Outcomes and factors affecting them in older age
	Dying well	Palliative Care and deaths

Better health and care for all

Summary Contents 3

Section	Slide	Contents
Healthcare services - Primary Care	Primary Care services	Size and number of GP Practices, Enhanced Services
	Long Term Conditions (Disease Burden)	Disease Registers and QOF
	Other Primary care in the ICT	Dental Activity, vaccination levels and medicines use
Healthcare services – MHLDA	Mental Health and Learning Difficulties	Dementia Diagnosis Rate, Learning Disabilities AHC, Talking therapies,
Healthcare services - Community	Community Health Services	Community Nursing, Community Beds, Community Services
Healthcare services - Non Urgent Care	Planned Care alternatives and Cancer	Advice and Guidance, DNA rates, PIFU, Cancer waiting times, FIT testing
	Planned Care	New Outpatients, Follow Up Outpatients, Outpatients with Procedures, Daycase and Elective Inpatients, OPProc:DC:EL ratio
Healthcare Services - UEC	Urgent and Emergency Care	111 calls, <i>999 calls</i> , <i>Ambulance Mobilisations</i>
	Acute Urgent Care	Emergency Inpatients, Long stay patients
	Care Homes: Urgent Healthcare use	Carehome numbers, 999 call rates, A&E and emergency admission rates
Adult Social Care	Adult Social Care	Contacts, patients receiving Long Term Support, Reported Quality of Life, Safeguarding concerns
Appendix	Links to useful sites	For more detail on the headlines in this pack

care for all

Who lives in Wealden ICT

Around 160,200 people live in Wealden (2021 Census)
An increase of 7.5% since 2011

Between 2011 and 2020 there have been

11,809 Births

15,572 Deaths

14,660 estimated increase from internal UK migration

2,370 estimated increase from international migration

Census 2021 data:

20% of the population is under 20,
compared to 23% for England

27% of the population is 65 or over,
compared to 18% for England

3.7% of the population is 85 or over,
compared to 2.4% for England

1,145 residents aged 65+ live in a care
home (with or without nursing)

Wealden Integrated Community Team



Wealden ICT Core20 areas;



LSOA (2021) based ICT boundaries.
© Stadia Maps; © OpenStreetMap contributors

Of the 95 neighbourhoods (2011 based LSOAs) in the Wealden ICT, there are **four Core20 neighbourhoods** (representing the most deprived 20% of neighbourhoods nationally) with a population of approximately 6,100 residents (Census 2021).

Core 20 neighbourhood

LSOA (2011) based boundaries.
© Stadia Maps; © OpenStreetMap contributors

better health and care for all

Key Demographic Groups within Wealden ICT

Wealden ICT has an older age structure than England, with proportionally more people aged over 50.

Compared to England there are fewer:

- Black or racially minoritised – fewer than 1 in 10 people
- People where English is not their main language
- LGB+

but more

- People who previously served in the army
- People who are married/in a civil partnership

and similar for

- People with a disability
- People providing unpaid care

Wealden ICT population groups

Age

Wealden has an older age structure than England:

- 20.5% of people are aged under 20 (23%)
- 53.0% aged 20-64 (58%)
- 26.5% aged 65+ (18%)

Ethnicity

8.2% of people are Black or racially minoritised* (27%):

- 1.4% Asian or Asian British (10%)
- 0.4% Black or Black British (4%)
- 1.7% Mixed or multiple ethnic group (3%)
- 0.1% Arab (0.6%)
- 4.3% White Irish or White other (8%)

Religion

42.1% of people have no religion or belief (37%):

- 49.5% Christian (46%)
- 0.5% Muslim (6.7%)
- 0.2% Jewish (0.5%)
- 0.3% Buddhist (0.5%)
- 0.2% Hindu (1.8%)
- 0.0% Sikh (0.9%)
- 0.8% Other religion (0.6%)

Pregnancy & maternity

There were 1,342 live births in 2021²

Sex

Female 51.8% (51%)
Male 48.2% (49%)

Gender identity

0.2% of adults aged 16+ identified as Trans in the 2021 Census (0.5%)

Sexual orientation

2.3% of those aged 16+ identified as LGB+ (gay or lesbian, bisexual or other minority sexual orientation) (3%)

Language

For 2.0% of people, English is not their main language (9%)
0.2% do not speak English well (1.6%)

Disability

17.3% of residents are disabled under the Equality Act (17%)

Children in care

At the end of March 2022, there were 628 children aged 0-17, 62 per 10,000, living in care in East Sussex (England 70 per 10,000)¹ [UTLA](#)

Veterans

4.7% of people aged 16+ stated on the 2021 Census that they had previously served in the armed forces (3.8%)

Marriage / civil partnership

52.8% of people aged 16+ are married or in a civil partnership (45%)
27.7% Never married/civil partnership (38%)
2.0% Separated (2%)
10.1% divorced/civil partnership dissolved (9%)
7.4% widowed / surviving civil partnership partner (6%)

Carers

9.3% of people provide unpaid care (9%)

England figure in brackets

Source: Census 2021 unless otherwise stated

¹ Department for Education, ² ONS

* Non White UK/British

[UTLA](#): Only available at UTLA level

Better health and care for all

Current population & change over the last 10 years

In Wealden ICT

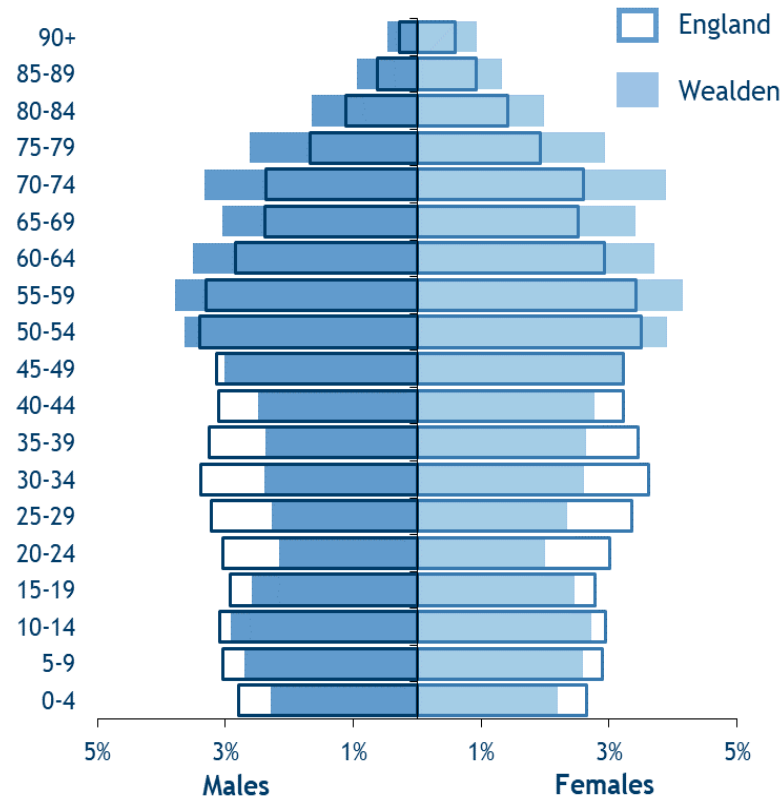
- There are relatively more women and men aged 50+ than England
- Overall there relatively fewer younger people than England, particularly between the ages 20 to 45.

Between 2011 and 2021

- The total population has increased by 7.5%, which was higher than England (6.6%)
- The largest % increase was in the 70-79 year olds, which has increased by 6,455 (46.1%) since 2011.

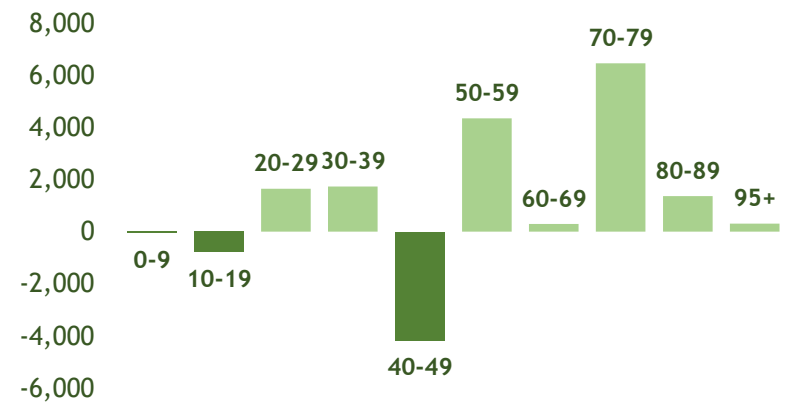
Total population 160,154

Wealden population profile in 2021



Increase in population 11,154

Wealden change in population between 2011 and 2021 Census, in 10 year age groups



	2021	2011	Wealden change	%	England %
0-19	32,764	33,600	-836	-2.5%	2.7%
20-64	84,900	81,400	3,500	4.3%	4.4%
65+	42,490	34,000	8,490	25.0%	20.1%
All ages	160,154	149,000	11,154	7.5%	6.6%

Better health and care for all

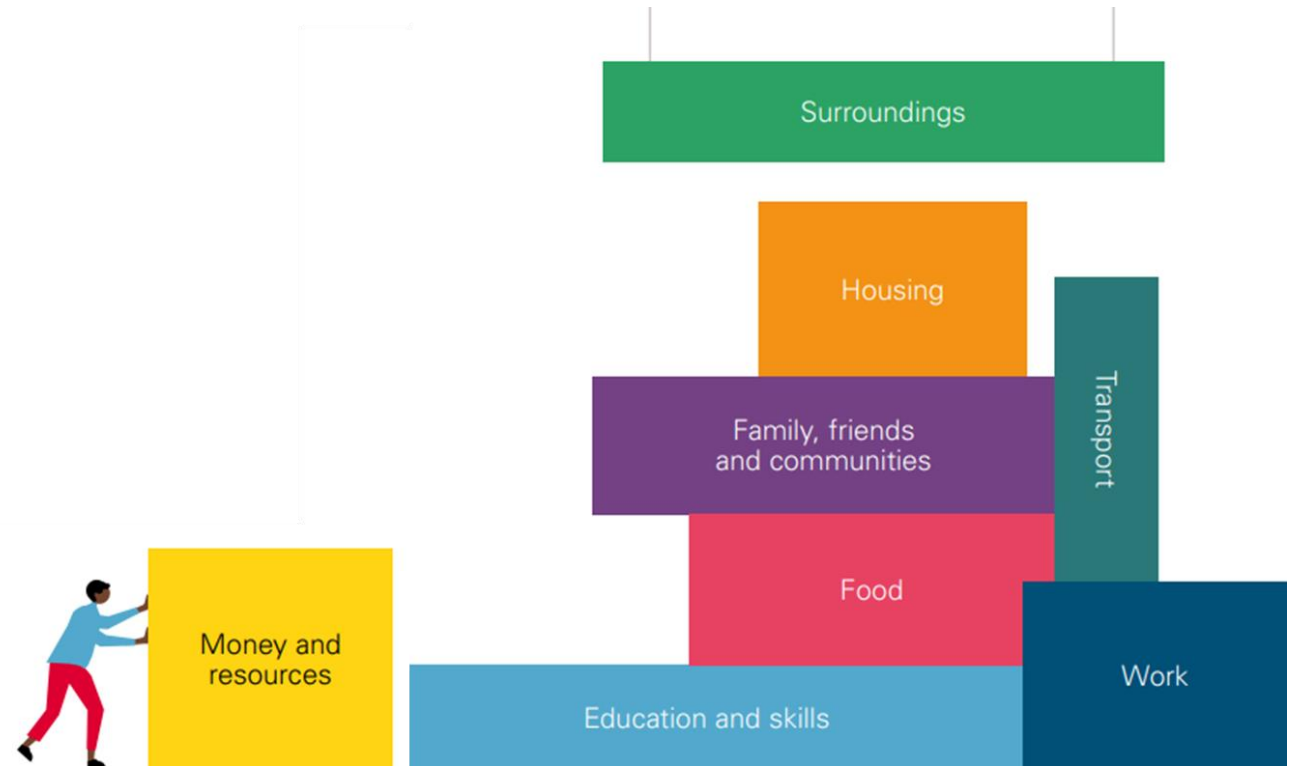
How is the population expected to change over the next ten years?

PLACEHOLDER SLIDE

Please note – population projects rebased for 2021 Census will not be published until early 2024

The building blocks of Health

- When we don't have the things we need, like warm homes and healthy food, and are constantly worrying about making ends meet, it puts a strain on our physical and mental health. This results in poorer physical and mental health, earlier onset of conditions and earlier death.
- Almost every aspect of our lives impacts our health and ultimately how long we will live – our jobs and homes, access to education and public transport and whether we experience poverty or discrimination. These are the building blocks of health.
- To create a county where everybody can thrive, we need all of the right building blocks in place:



Source: [How to talk about the building blocks of health - The Health Foundation](#)

Better health and care for all

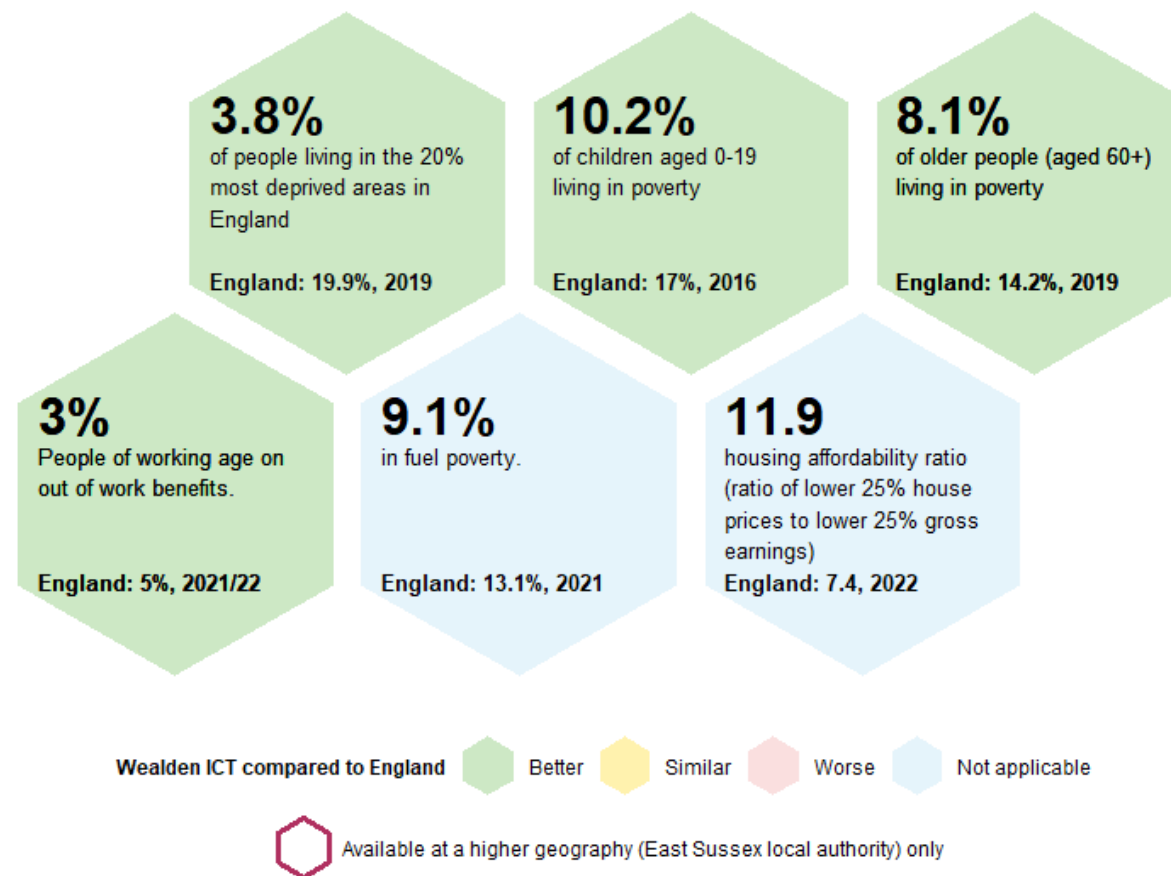
Building blocks of health in Wealden ICT

In Wealden ICT, there is significantly fewer percentage of people living in more deprived areas than England.

Compared to England, the ICT is significantly **better** for

- children living in poverty (around 1 in 10)
- older people living in poverty (fewer than 1 in 10)
- People of working age on out of work benefits
- and fewer people in fuel poverty compared to England

Housing cost is an issue in Wealden with those on the lowest 25% of earnings requiring almost 12 times their earning to afford the lowest 25% of housing prices, compared to 7.4 times across England.

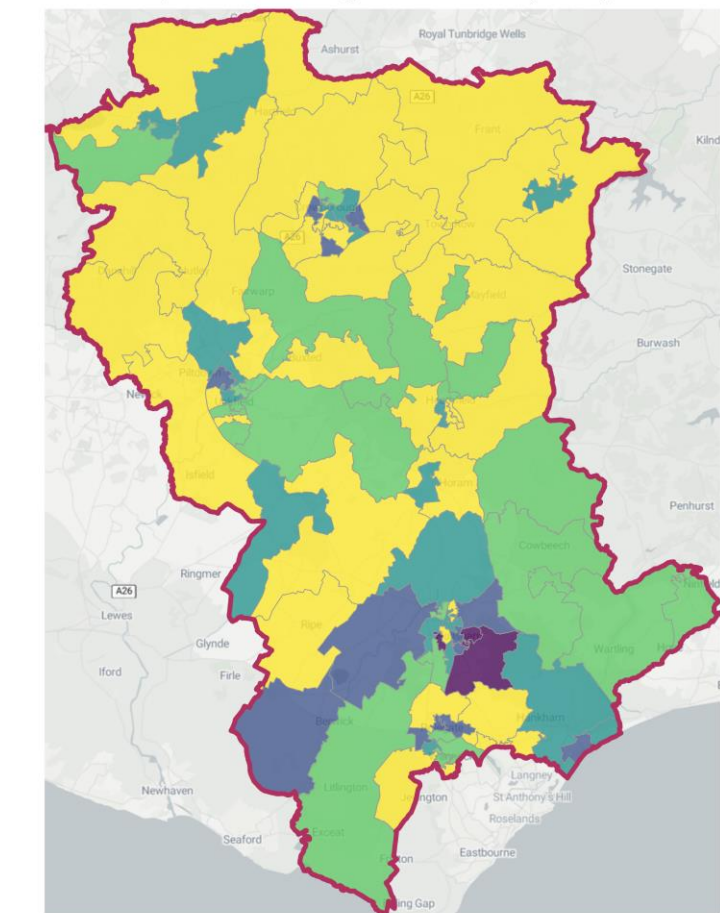


Better health and care for all

Building blocks in Wealden ICT

Income deprivation is defined as receiving Income Support or income-based Jobseekers Allowance or income-based Employment and Support Allowance or Pension Credit (Guarantee) or Universal Credit (in the ‘Searching for work’, ‘No work requirements’, ‘Planning for work’, ‘Working – with requirements’ and ‘Preparing for work’ conditionality groups) or families not in receipt of these benefits but in receipt of Working Tax Credit or Child Tax Credit with an equivalised income (excluding housing benefit) below 60 per cent of the national median before housing costs

Income Deprivation Affecting Children Index (IDACI)



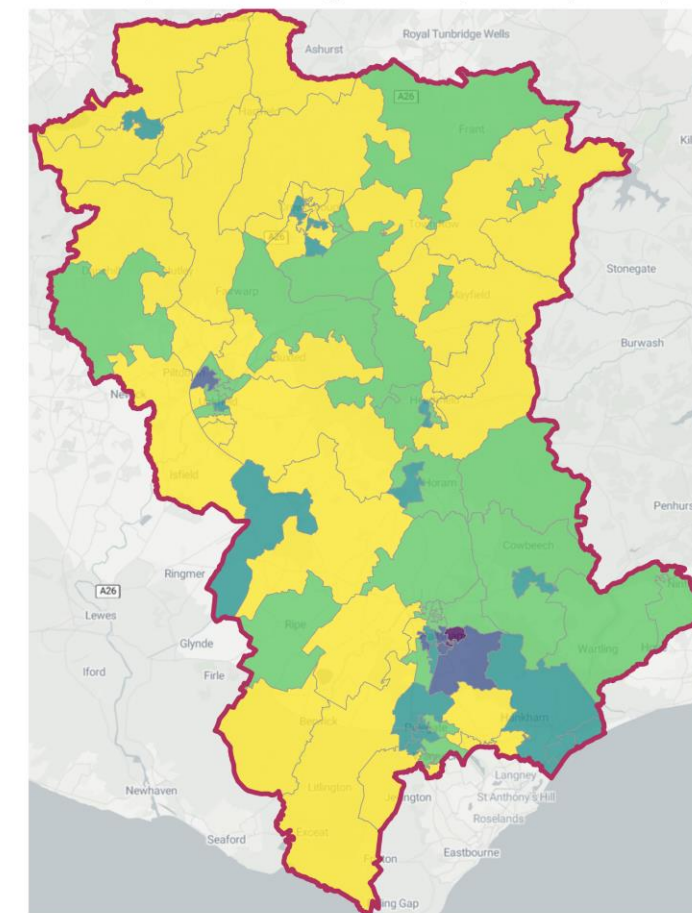
IDACI score
(national rankings)

- Most deprived 20%
- Quintile 2
- Quintile 3
- Quintile 4
- Least deprived 20%

In Wealden ICT, three of its 95 neighbourhoods had an IDACI score (proportion of 0-15s living in income deprived families) in the top 20% most deprived neighbourhoods in the country. The highest score in a neighbourhood locally was 32.6% or one in three children experiencing income deprivation.

LSOA (2011) based boundaries.
© Stadia Maps; © OpenStreetMap contributors

Income Deprivation Affecting Older People Index (IDAOPI)



IDAOPI score
(national rankings)

- Most deprived 20%
- Quintile 2
- Quintile 3
- Quintile 4
- Least deprived 20%

There were also four neighbourhoods in Wealden ICT with an IDAOPI score (proportion of 60+ year olds living experiencing income deprivation) in the top 20% most deprived neighbourhoods in the country. The highest score in a neighbourhood locally was 26.5% or one in four older people.

LSOA (2011) based boundaries.
© Stadia Maps; © OpenStreetMap contributors

Better health and care for all

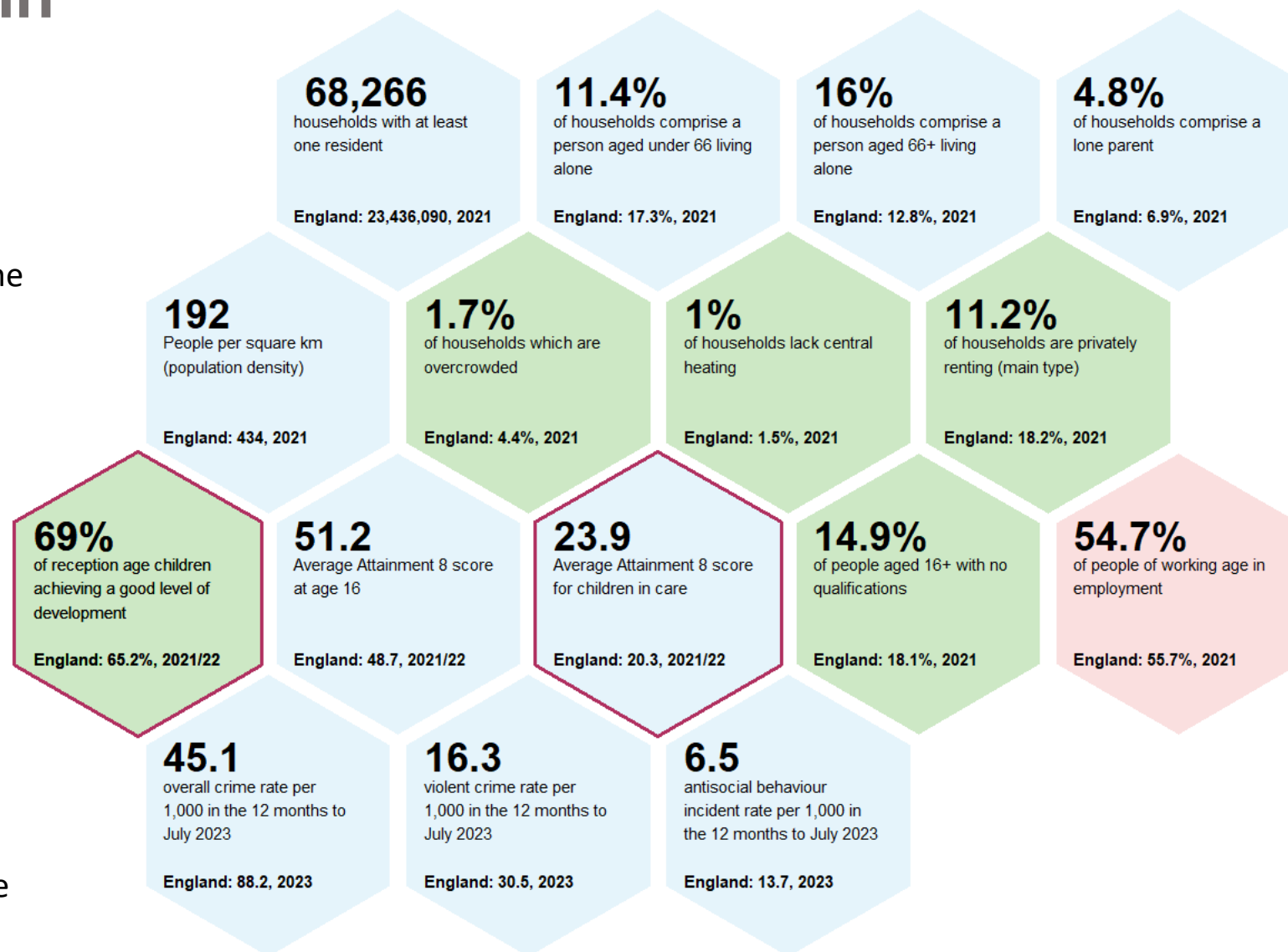
Building blocks of health in Wealden ICT

Within Sussex, Wealden ICT has:

- fewer people per square km and so is one of the least densely populated ICTs
- a higher percentage of people aged 66+ living alone
- lower overcrowding and lack of central heating, compared to England
- the lowest percentage of households which are privately rented of all ICTs

The population is relatively more educated compared to England with the percentage of children and children in care having a higher average attainment 8 score than England. However, there are relatively fewer people of working age in employment than England.

Overall crime rate, violent crime rate and anti-social behaviour incident rates are lower than England, and amongst the lowest, if not the lowest, of all ICTs in the Sussex area.



Wealden ICT Compared to England



Better



Similar



Worse

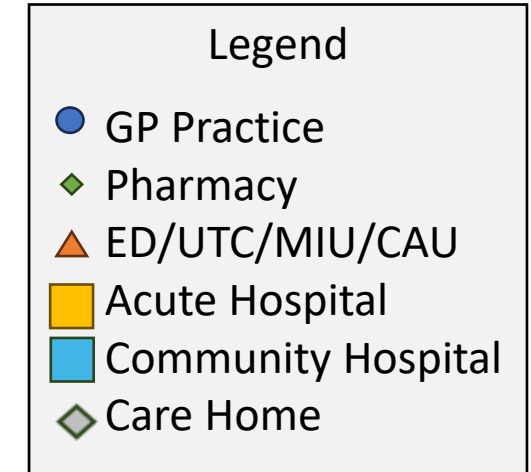
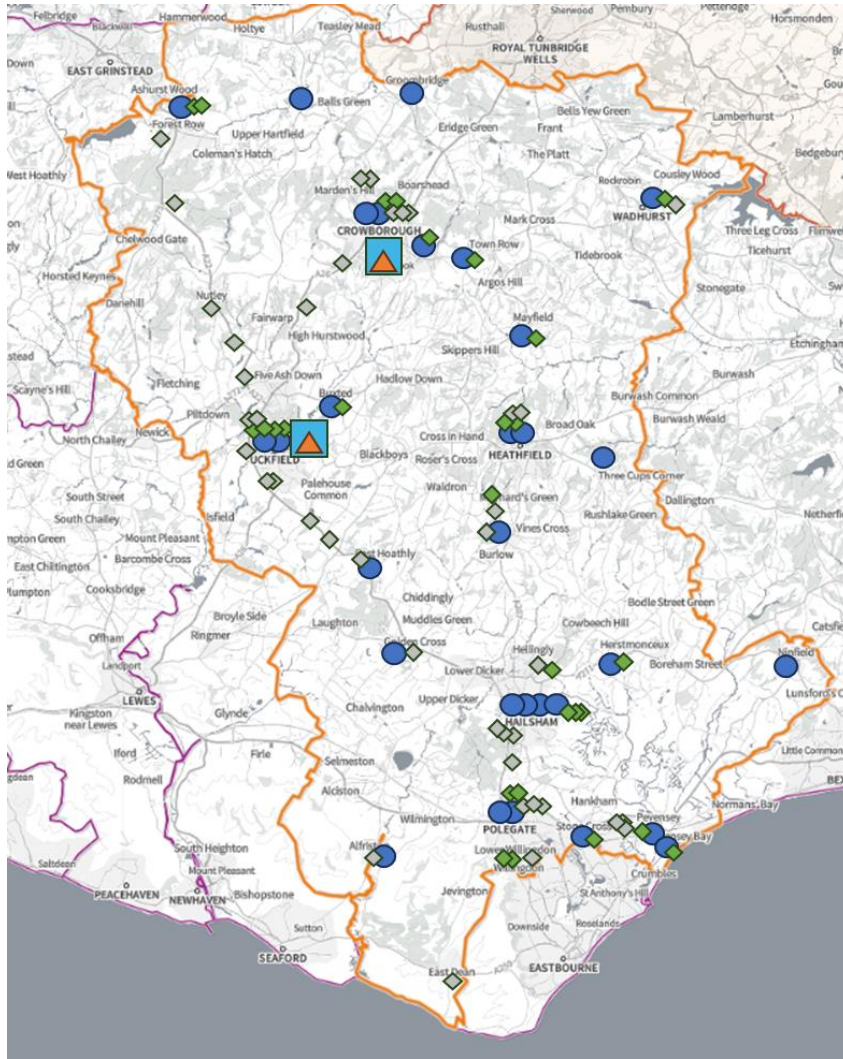


Not applicable



Available at a higher geography (East Sussex local authority) only

Services within Wealden ICT



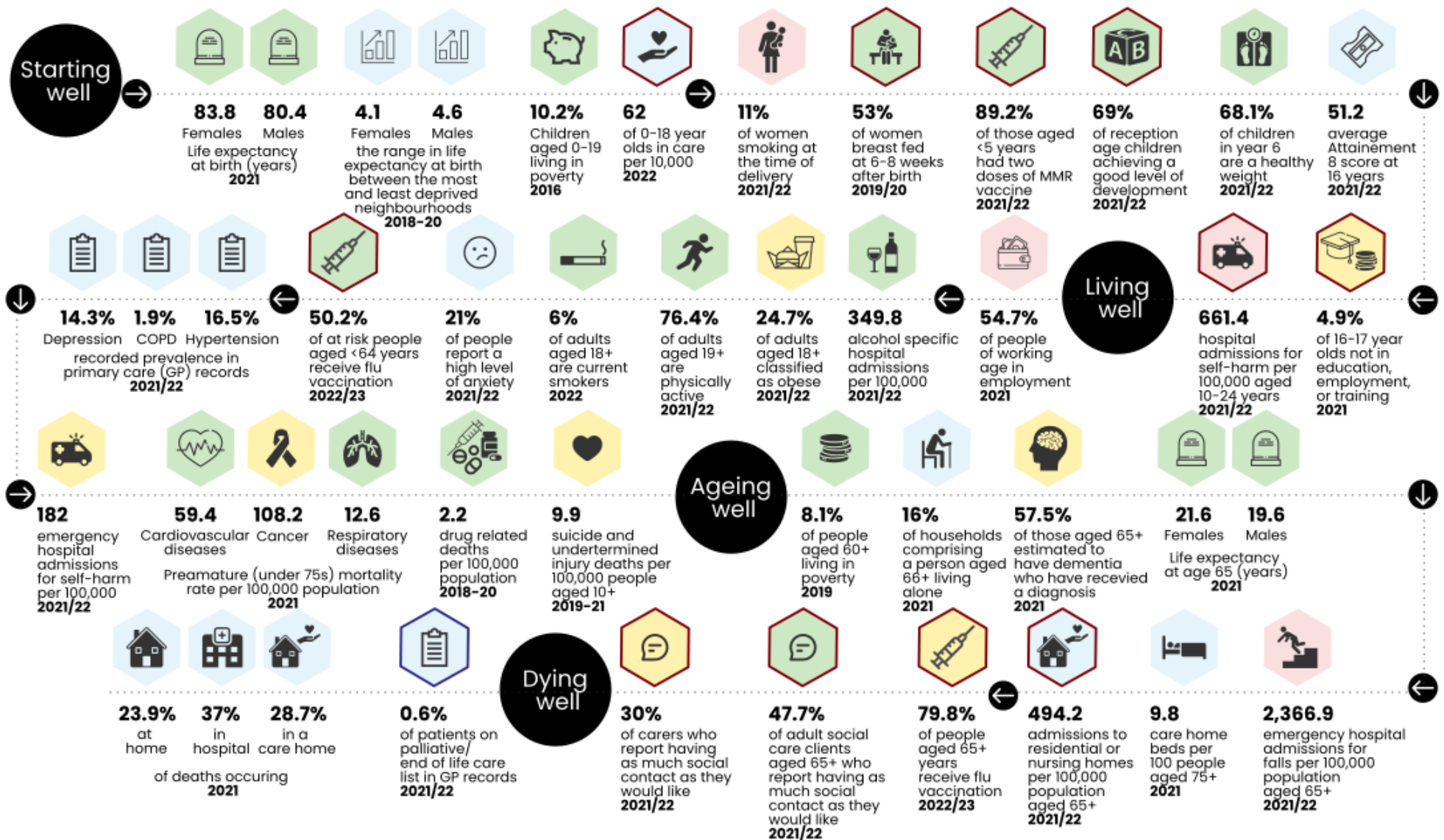
More detailed mapping of services is available at:

Better health and care for all

Wealden Integrated Community Team

Whilst some issues affect people of all ages, outcomes have been placed in the life stage where the impact may be greatest.

Data are shown for Wealden ICT and are compared with England



Available only at a higher geography (East Sussex local authority)

Available only for registered population (e.g. CCG or Sub-ICB geography)

Life expectancy and inequalities – Wealden ICT

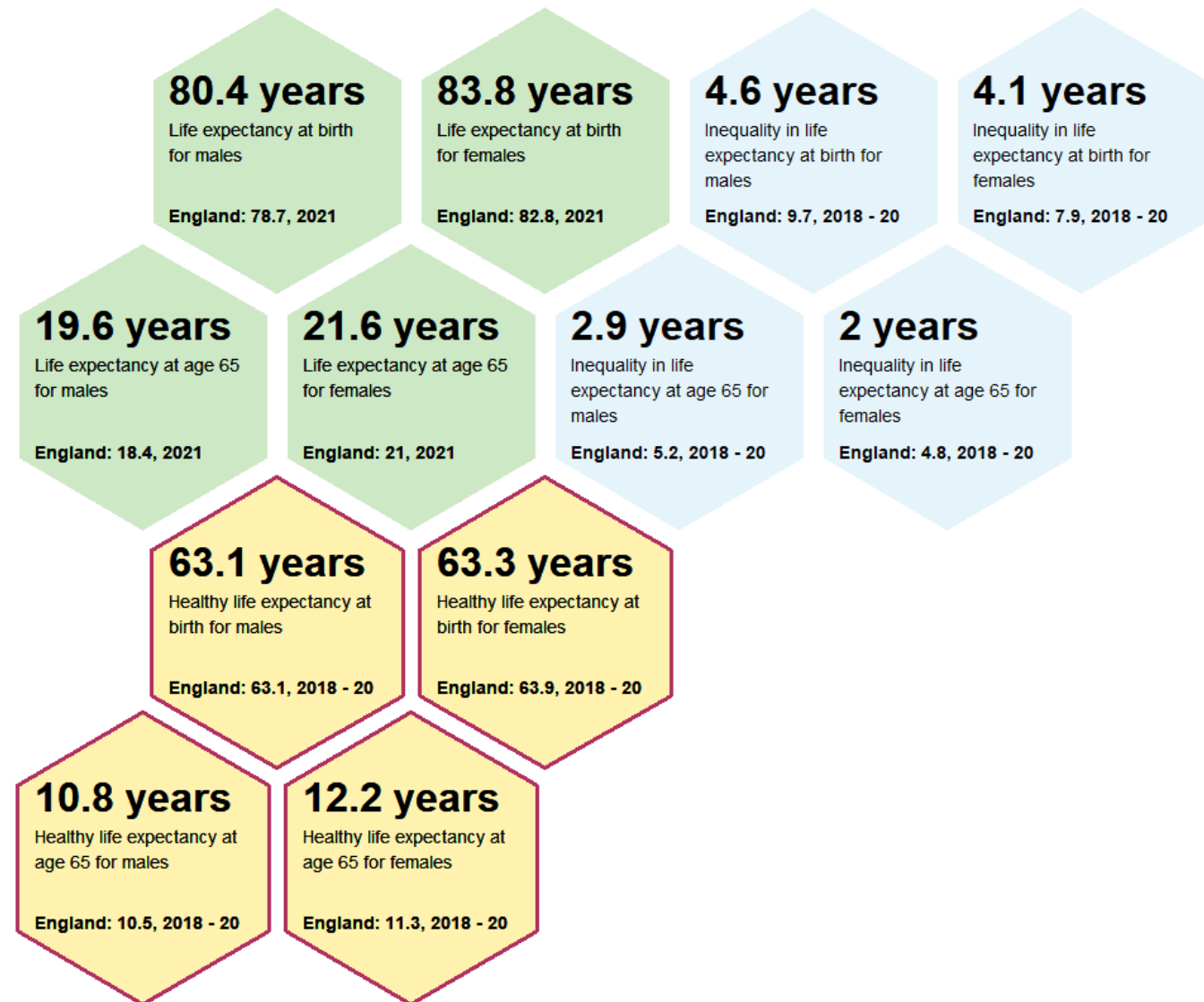
Compared to England, life expectancy at **birth** and at **65** is

- significantly **better** for males and females and amongst the highest in Sussex ICT area

Compared to England, the gap in life expectancy at **birth** and at **65** is

- lower for males and females

Healthy life expectancy data is currently only available at East Sussex county level which is similar to England for both males and females.



Wealden ICT compared to England



Better



Similar



Worse



Not applicable



Available at a higher geography (East Sussex local authority) only

Key risk factors and greatest burden of disease – East Sussex

These figures are only available for the whole of East Sussex.

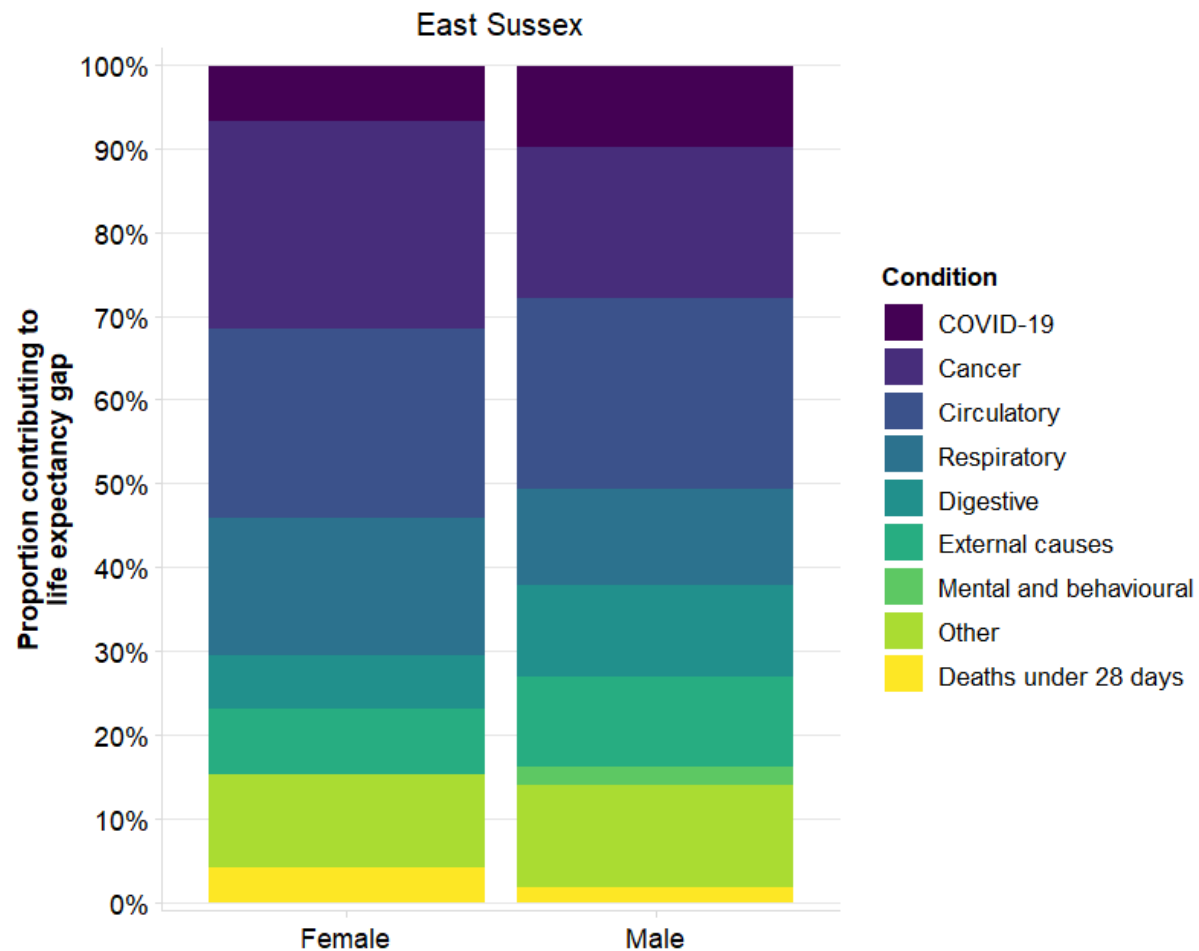
The causes of death which contribute the most to inequalities in life expectancy in East Sussex are:

- For males – Circulatory disease (23%), Cancer (18%) and Respiratory disease (12%)
- For females – Cancer (25%), Circulatory (23%) and Respiratory disease (16%)

Source: [Segment Tool \(phe.gov.uk\)](https://phe.gov.uk)

Causes of death contributing most to inequalities in life expectancy between the most and least deprived quintiles (20%) of each area.

East Sussex; data for 2020 and 2021 combined.



Data for lower tier local authorities has been included for 2014 to 2016 and 2017 to 2019, but have not been included for 2020 to 2021 as the breakdowns based on 2 years of data are not robust due to small numbers.

Key risk factors and greatest burden of disease – East Sussex

Only
available at
County level

If we want to improve population health, we need to understand what the risk factors are for East Sussex's population and whether, and how, we can modify them

Top 20 causes of the greatest burden of ill health

1	Ischemic heart disease
2	Low back pain
3	COPD
4	Lung cancer
5	Stroke
6	Diabetes
7	Alzheimer's disease
8	Lower respiratory infect
9	Depressive disorders
10	Falls
11	Colorectal cancer
12	Headache disorders
13	Breast cancer
14	Age-related hearing loss
15	Cardiomyopathy
16	Neck pain
17	Osteoarthritis
18	Other musculoskeletal
19	Endo/metab/blood/immune
20	Prostate cancer

Communicable, maternal,
neonatal, and nutritional
diseases

Non-communicable diseases

Injuries

Top 20 risk factors

1	Smoking
2	High fasting plasma glucose
3	High body-mass index
4	High blood pressure
5	Alcohol use
6	High LDL
7	Low temperature
8	Low whole grains
9	Occupational carcinogens
10	Particulate matter
11	Kidney dysfunction
12	Drug use
13	Low physical activity
14	Low bone mineral density
15	High processed meat
16	Low fruit
17	High red meat
18	Secondhand smoke
19	Low legumes
20	Low nuts and seeds

Metabolic risks

Environmental/occupational
risks

Behavioral risks

To improve life expectancy, healthy life expectancy, inequalities in both life expectancy and healthy life expectancy:

- Tackle major behavioural risks – tobacco, diet, exercise, alcohol and drugs
- Diabetes is a rising concern
- CVD reduction – including controlling blood pressure key and has considerable population impact
- Cancer major cause of ill health, importance of behaviours and screening
- Mental health
- Immunisation
- Air quality and cold homes

In addition, for healthy life expectancy and inequalities in healthy life expectancy tackle:

- MSK and pain management
- Sensory impairment

Source: [Global Burden of Disease Visualisations: Compare \(thelancet.com\)](https://www.thelancet.com/global-burden-of-disease-visualisations)

Better health and care for all

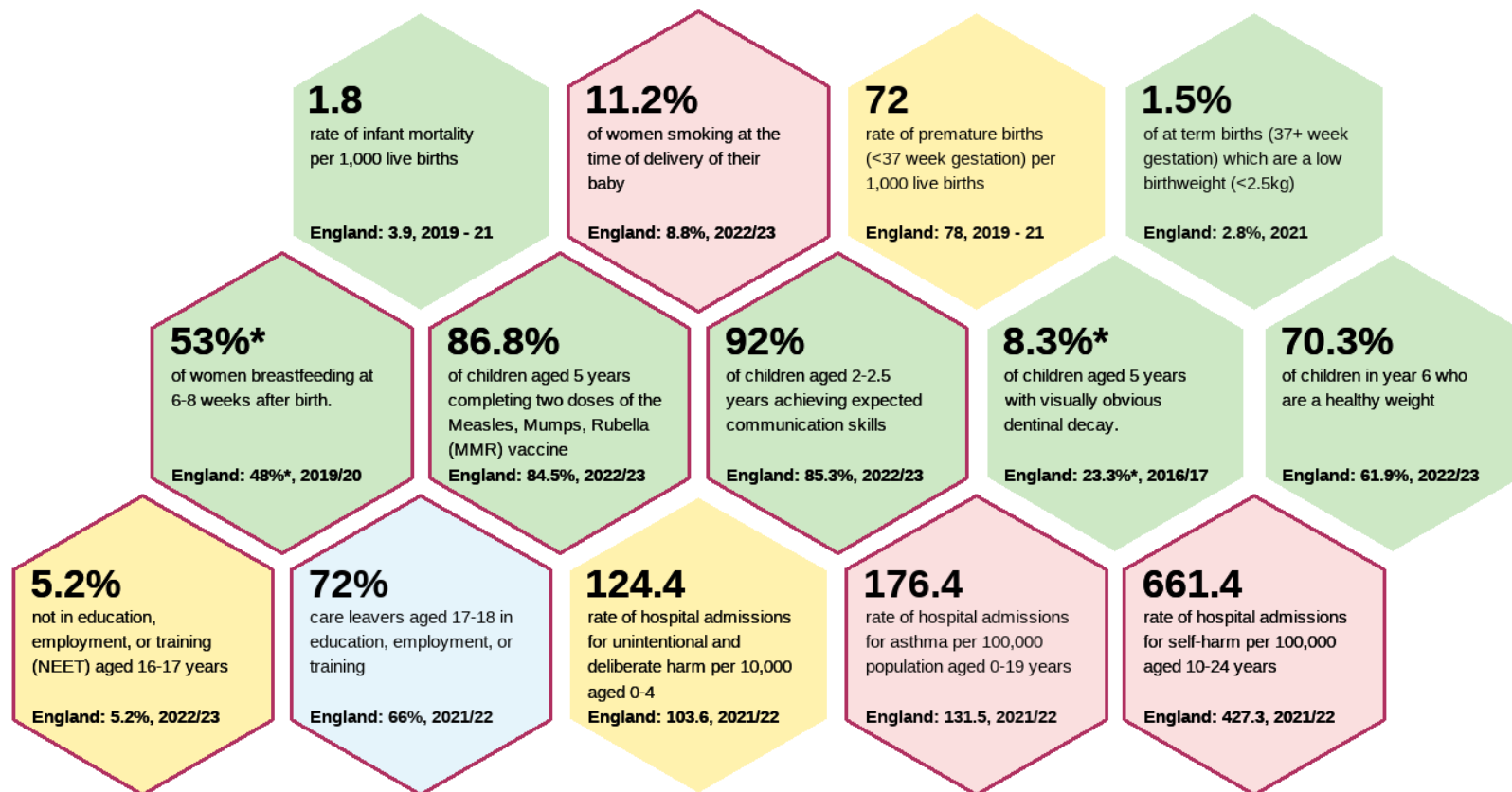
Starting well in life in Wealden ICT

Wealden ICT is significantly **better** than England for

- infant mortality
- term births which are low birth weight
- year 6 children who are healthy weight

Other measures are only at an East Sussex level and show significantly **better**

- overall MMR immunisation uptake and significantly **worse**
- admission rates for Asthma (ages 0 to 19)
- admission rates for self-harm (ages 10 to 24)
- mothers smoking at time of delivery and one of the worse ICTs in the Sussex area



Wealden ICT compared to England



Better



Similar



Worse



Not applicable



Available at a higher geography (East Sussex local authority) only

* Note: due to data quality issues for these indicators in recent years, data are shown for an older time period than is currently available for higher geographies (e.g. regionally and nationally)

Better health and care for all

Living well in Wealden ICT

Wealden ICT has significantly **better rates** of

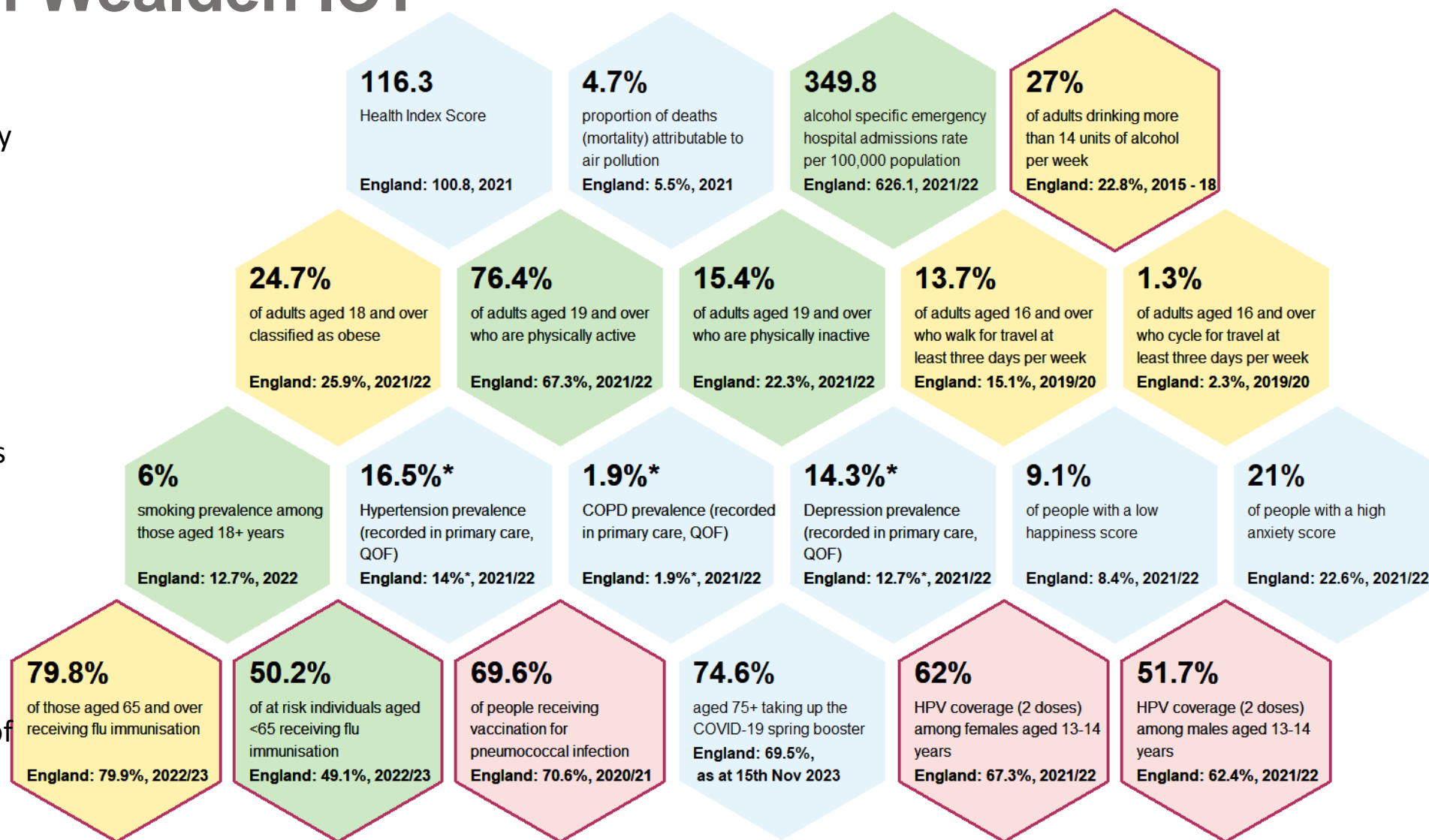
- alcohol specific emergency hospital admissions
- adults who are physically active
- smoking prevalence

and some of the best of all Sussex ICTs.

It has **higher prevalence** rates of

- hypertension
- depression
- low happiness scores.

For East Sussex overall there are significantly worse rates of 13 to 14 year olds receiving HPV vaccine compared to England.



Wealden ICT compared to England



Better



Similar



Worse



Not applicable



Available at a higher geography (East Sussex local authority) only

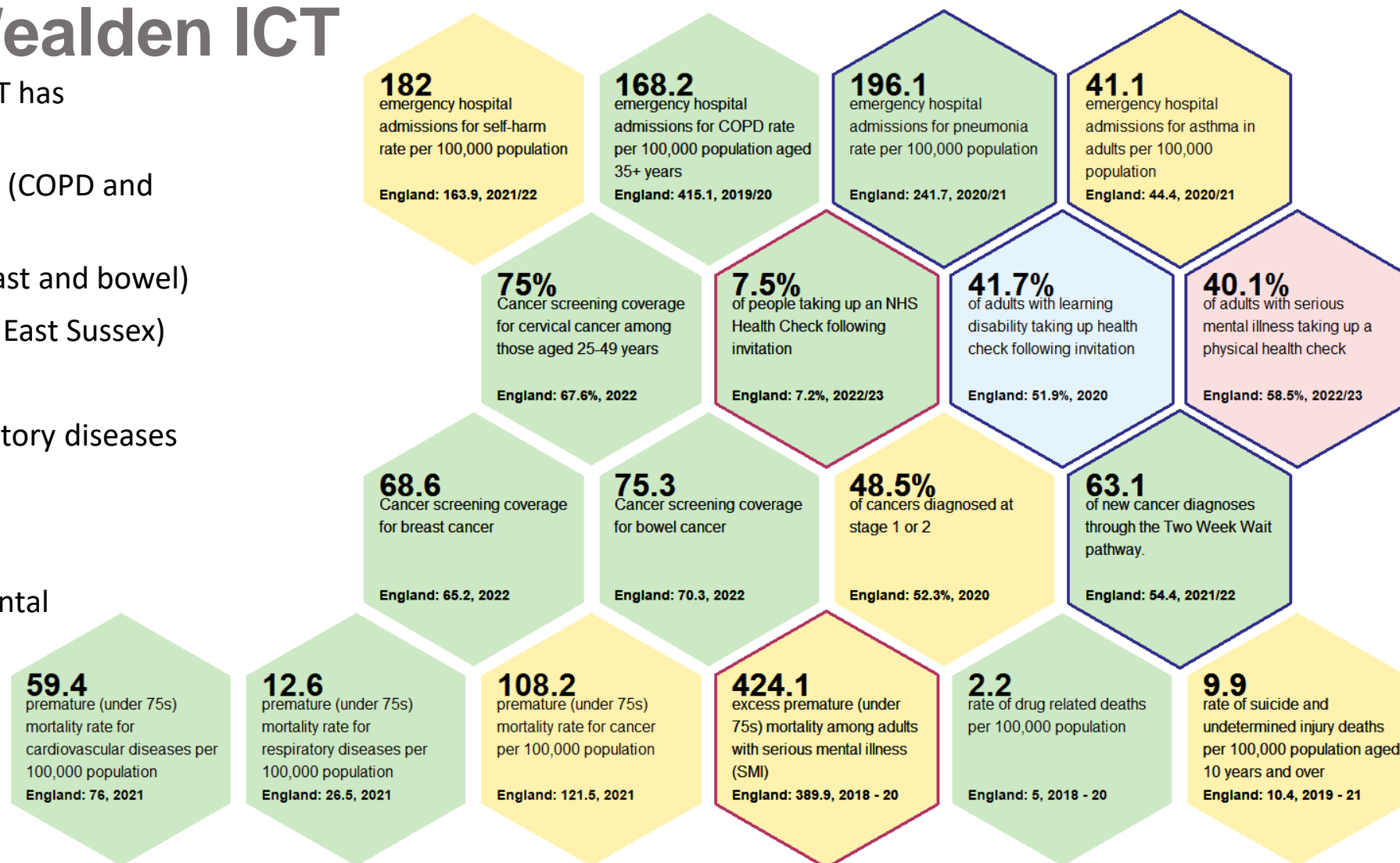
* Note: due to data quality and availability for these indicators in recent years, data are shown for an older time period

Living well in Wealden ICT

Compared to England, Wealden ICT has significantly **better** rates of:

- Emergency hospital admissions (COPD and pneumonia)
- Cancer screening (cervical, breast and bowel)
- Drug related deaths (highest in East Sussex)
- Cancer diagnosis
- premature mortality for respiratory diseases and CVD

East Sussex county is significantly worse for adults with a serious mental illness taking up a physical health check



Wealden ICT compared to England

■ Better
 ■ Similar
 ■ Worse
 ■ Not applicable



Available at a higher geography (East Sussex local authority) only



Indicators are published at primary care or other organisation level (NHS East Sussex CCG and Sussex ICB - 97R) representing registered patients rather than residents

Ageing well – Wealden ICT

Compared to England, Wealden ICT has **worse** rates for

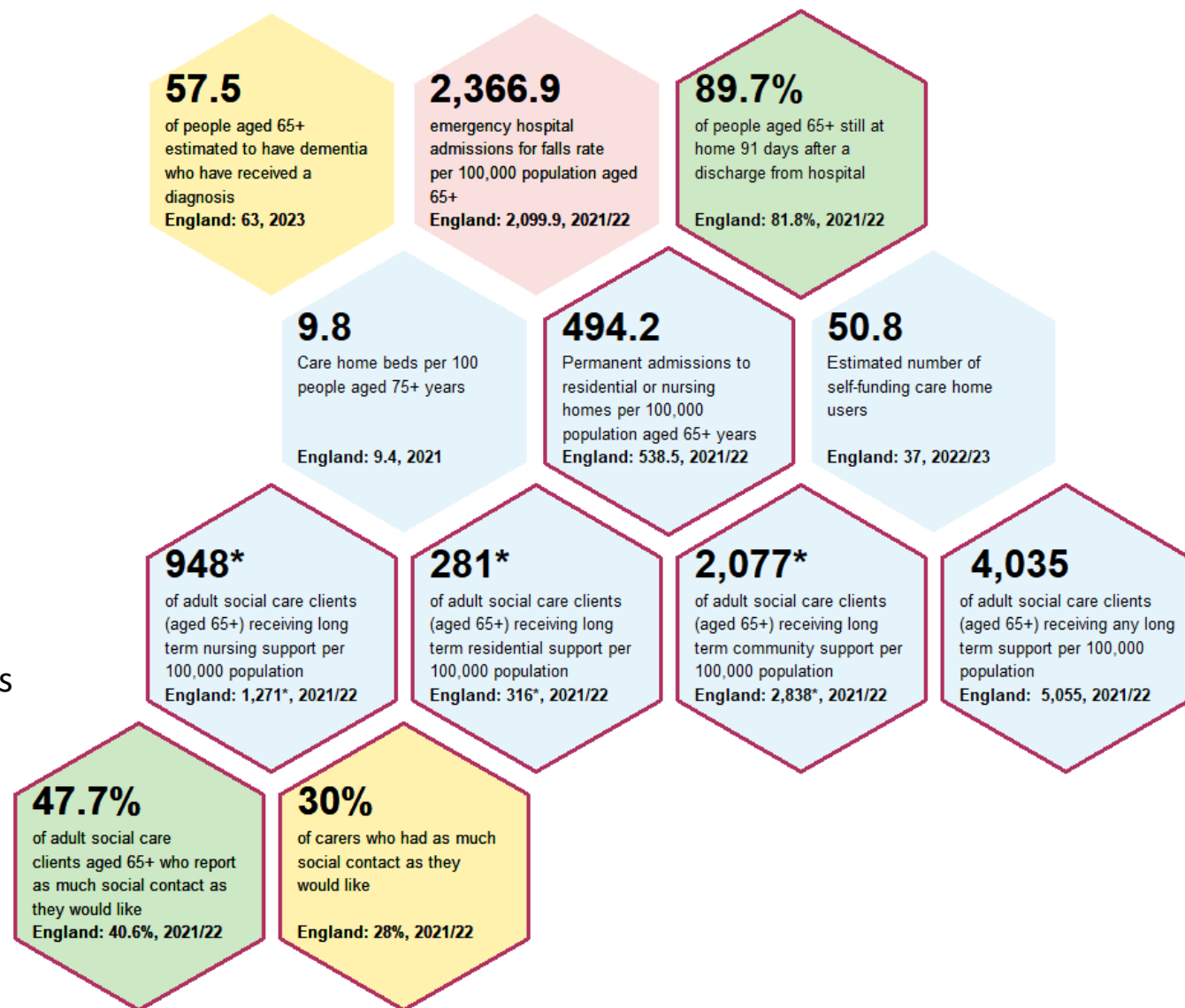
- Emergency hospital admissions for falls

Compared to England, Wealden ICT has **higher** rates for

- Self-funding carehome users

Compared to England, East Sussex has **worse** rates of

- people aged 65+ who are still at home 91 days after discharge
- Adult social care clients aged 65+ who report they have as much social contact as they would like



Wealden ICT compared to England



Better



Similar



Worse



Not applicable



Available at a higher geography (East Sussex local authority) only

* Note: rates have been calculated on rounded values and may not match outputs published elsewhere exactly.

Dying well – Wealden ICT

There are a limited set of indicators available around dying well.

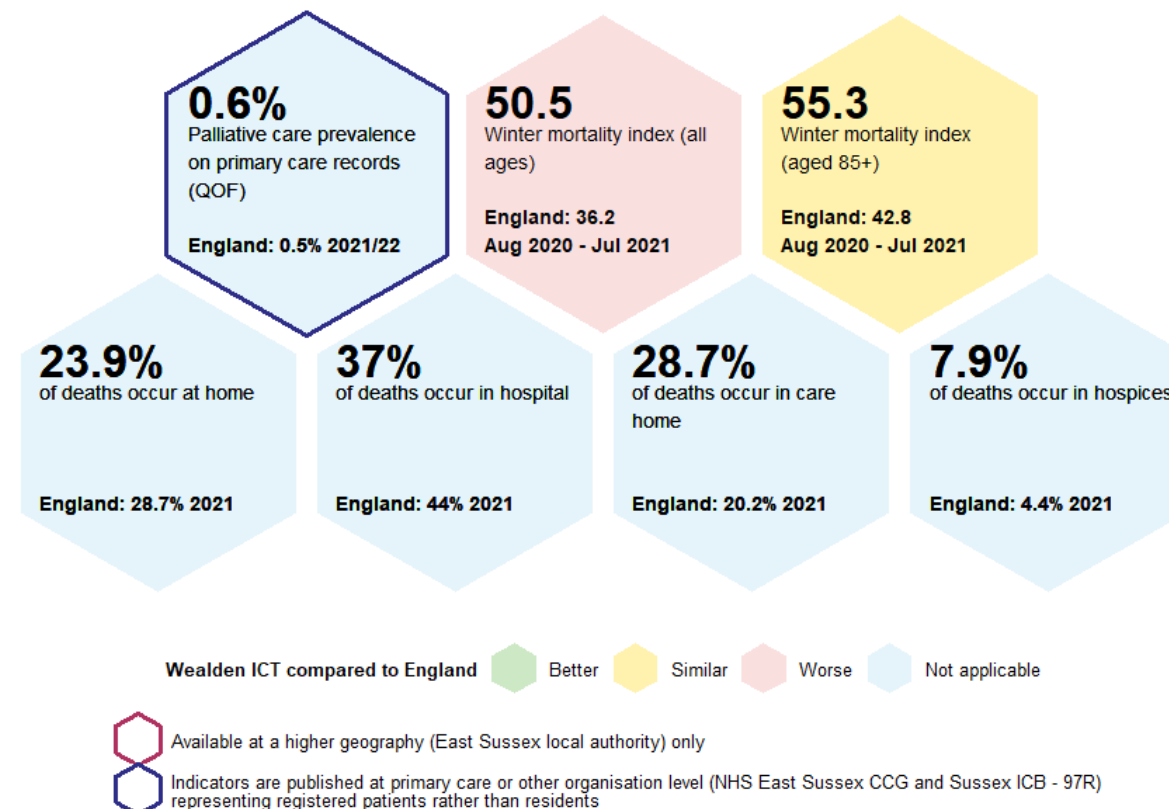
Compared to England, within Wealden ICT (in 2021) there was a:

- **lower** percentage of deaths that occurred at home or in hospital
- **higher** percentage occurred in a care home or hospice.

(Please note the Covid19 pandemic affected the place of death data for 2021)

but has a significantly **worse**

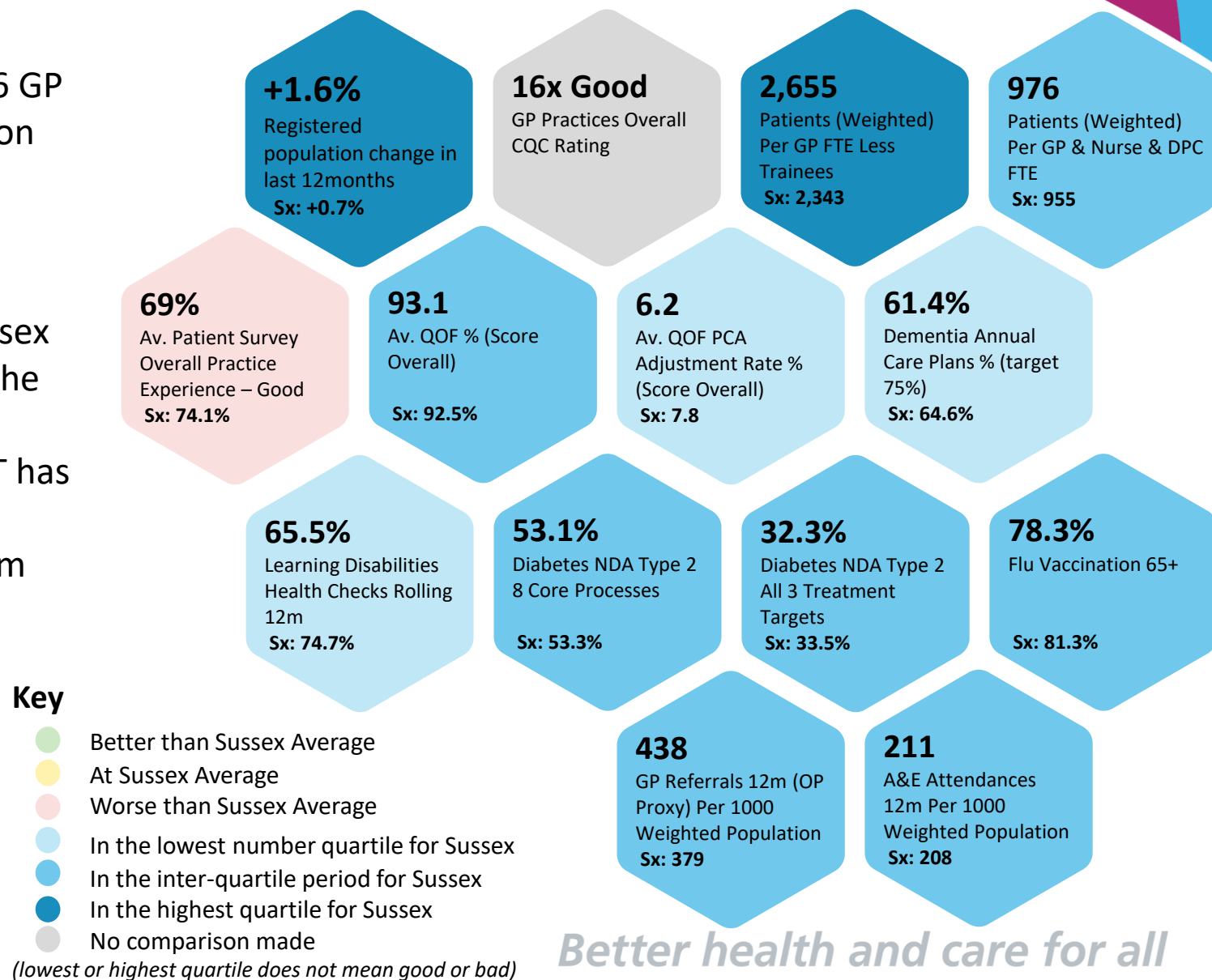
- winter mortality index (all ages).



Better health and care for all

Primary Care in Wealden ICT

- Within Wealden ICT there are 4 PCNs with 16 GP Practices with very varying levels of population
 - 1 practice (Buxted) has >15k registered patients
- The increase in registered GP population for Wealden ICT is in the highest quartile for Sussex
- The weighted rate of FTE GPs is higher than the Sussex average
- Compared to Sussex as a whole, Wealden ICT has lower rates for
 - Average QOF PCAs (patients exempt from QOF standards)
 - Dementia annual care plans
 - LD health checks



Better health and care for all

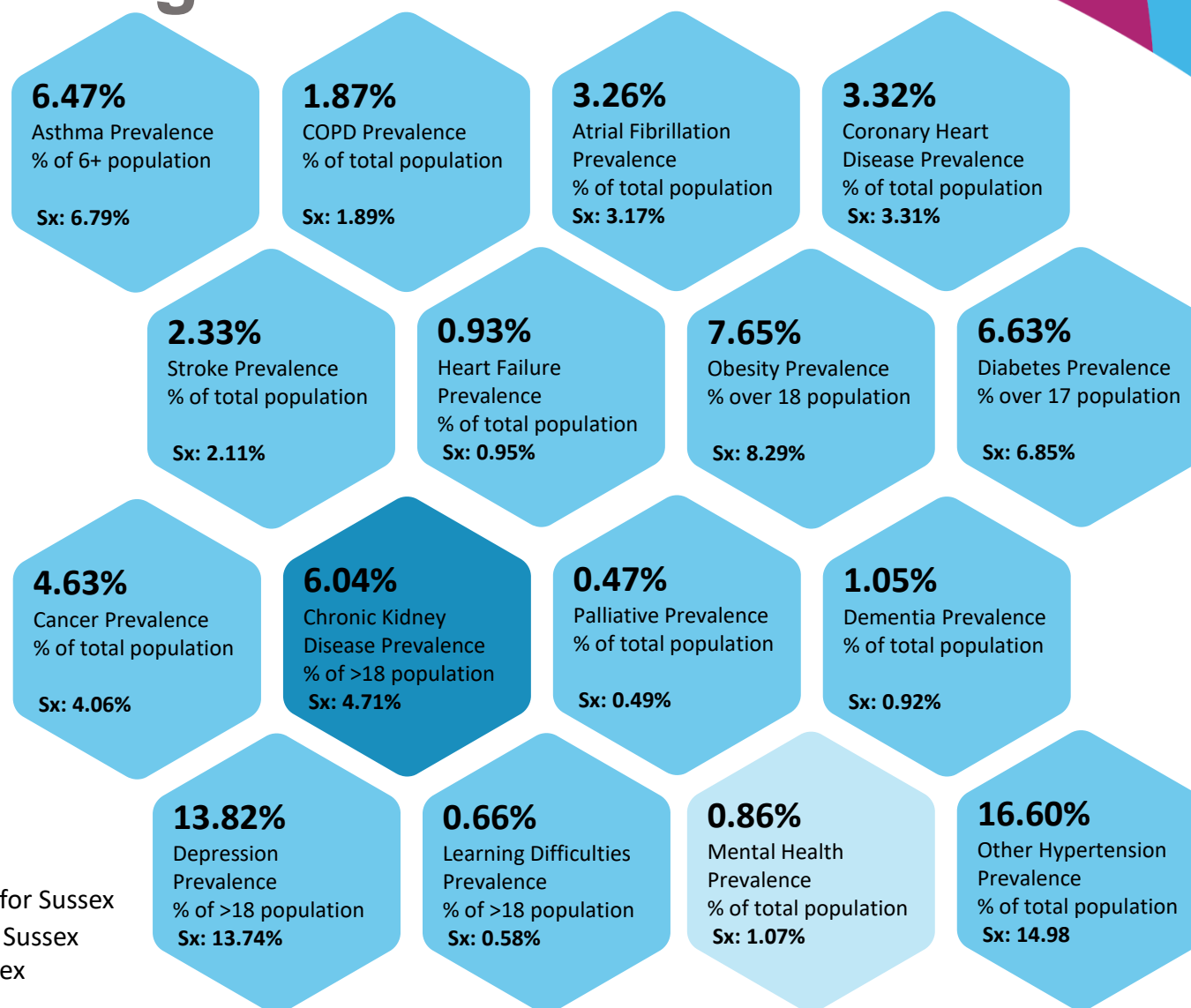
Long term Conditions : QOF registers – Wealden ICT

- In Wealden ICT there are higher rates of people with registered with registered Chronic Kidney Disease when compared to Sussex
- Mental Health prevalence is lower than the Sussex average

Key

- Better than Sussex Average
- At Sussex Average
- Worse than Sussex Average
- In the lowest number quartile for Sussex
- In the inter-quartile period for Sussex
- In the highest quartile for Sussex
- No comparison made

(lowest or highest quartile does not mean good or bad)



Better health and care for all

Primary Care 2 – Wealden ICT

- COVID Booster rates for Wealden ICT are higher than the Sussex average
- Flu vaccination rates for both under 50 and 65+ are lower than the Sussex average

86.2%

Covid Booster uptake
22/23

Sx: 84%

78.3%

65+ flu vaccination
rate

Sx: 81.3%

38.2%

Flu vacc rate, 6m to
under 50 at risk

Sx: 38.5%

Key

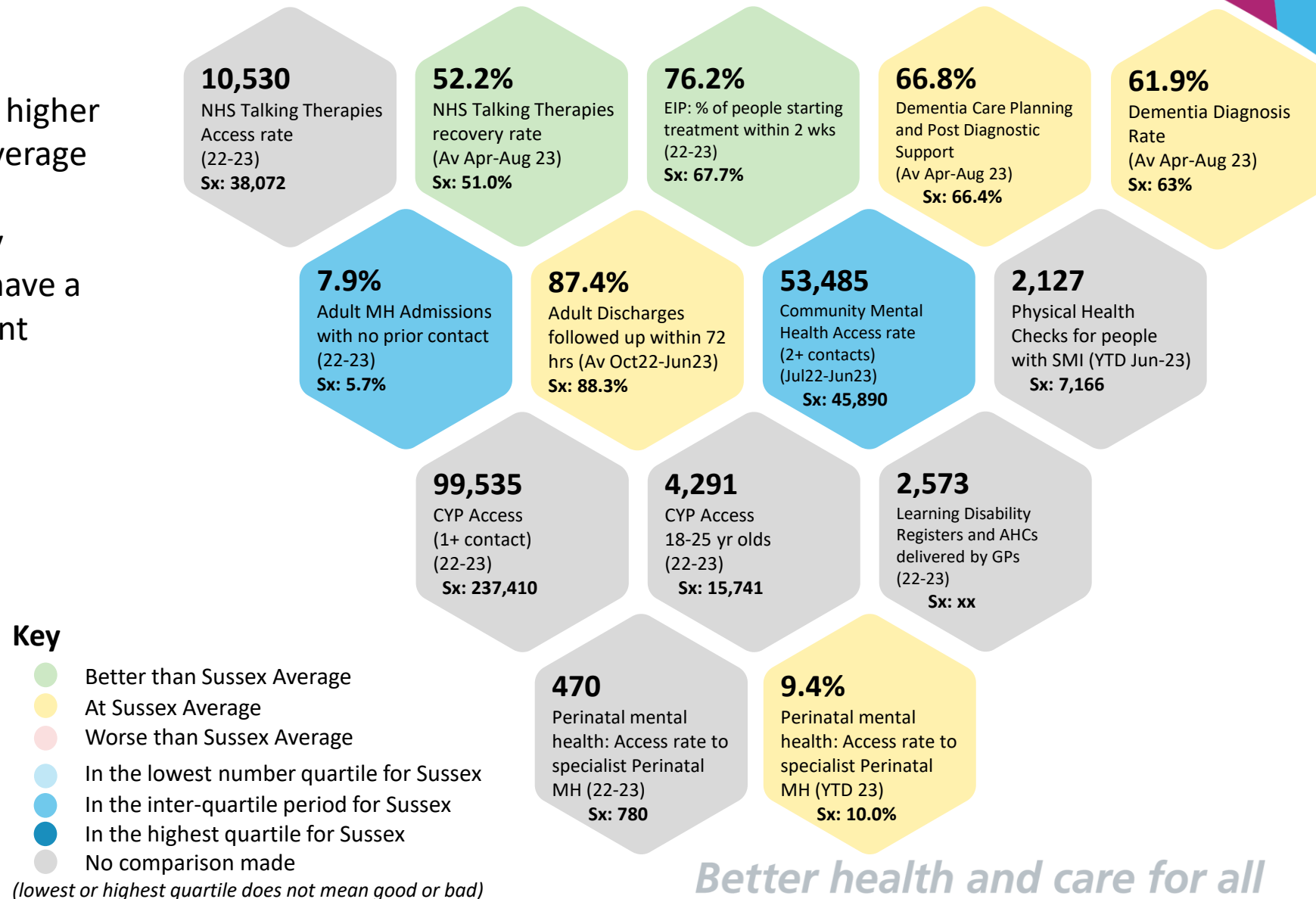
- Better than Sussex Average
 - At Sussex Average
 - Worse than Sussex Average
 - In the lowest number quartile for Sussex
 - In the inter-quartile period for Sussex
 - In the highest quartile for Sussex
 - No comparison made
- (lowest or highest quartile does not mean good or bad)

Better health and care for all

Mental Health – East Sussex

Figures are only available at East Sussex, West Sussex and Brighton Areas

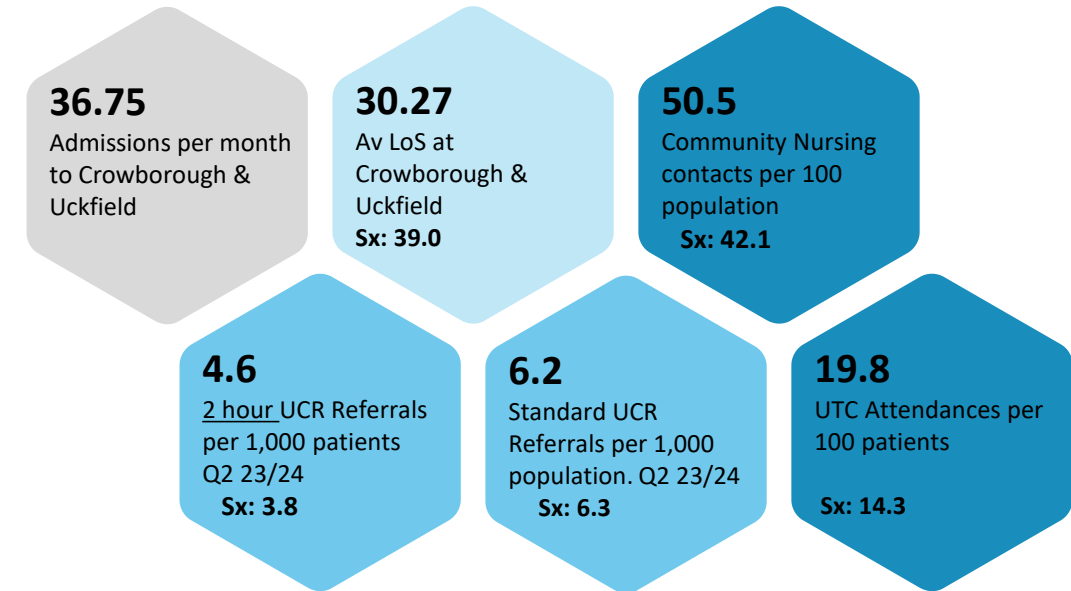
- East Sussex patients have a slightly higher rate of recovery than the Sussex Average
- East Sussex patients requiring Early Intervention in Psychosis services have a higher proportion starting treatment within 2 weeks



Better health and care for all

Community Health Services - Wealden ICT

- The number of Community nursing contacts for Wealden ICT patients is higher than the Sussex average
- Attendances at UTCs is higher than the Sussex average
- The average length of stay in Crowborough and Uckfield community beds is lower than the Sussex average



Figures above are for the full year 22/23 unless stated otherwise

Key

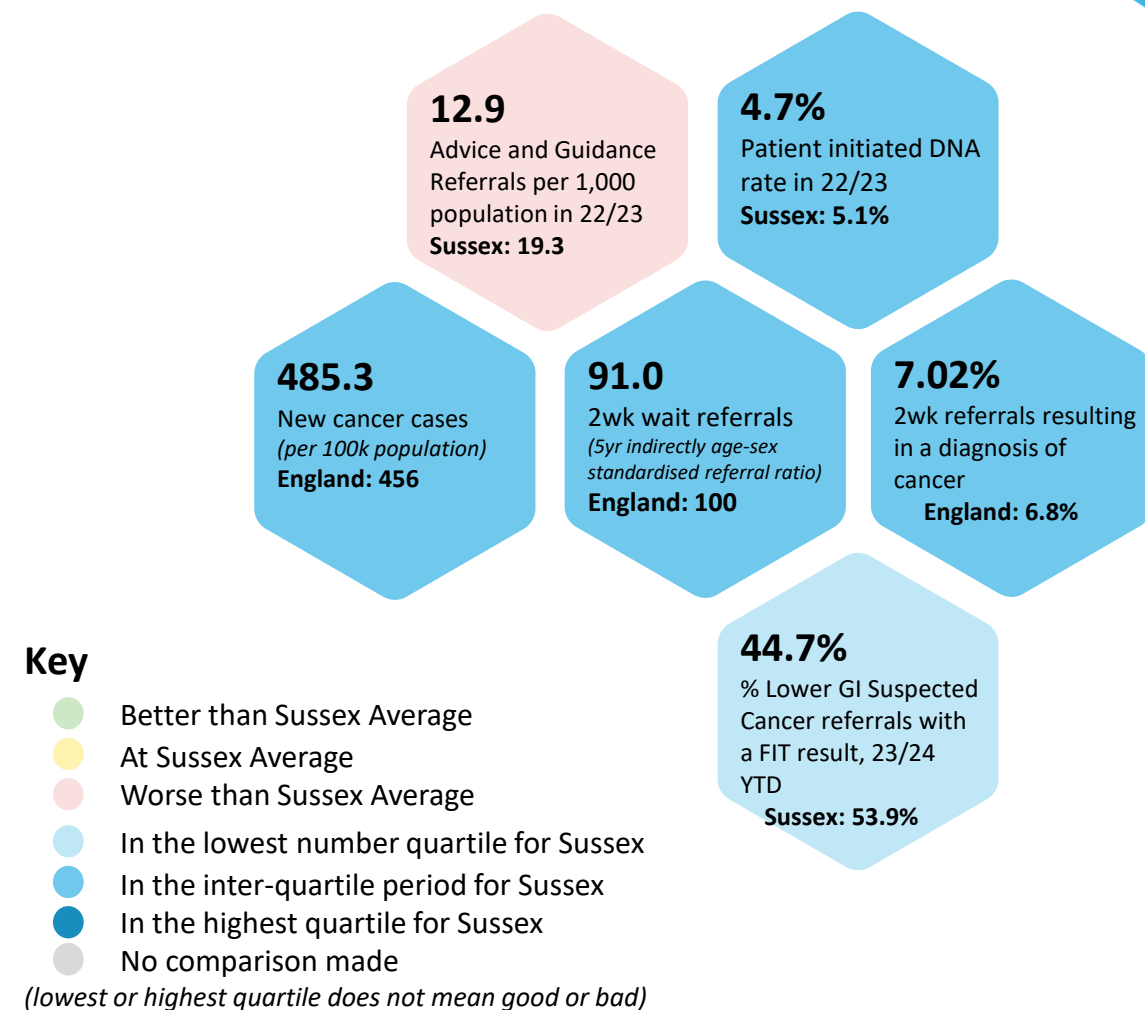
- Better than Sussex Average
- At Sussex Average
- Worse than Sussex Average
- In the lowest number quartile for Sussex
- In the inter-quartile period for Sussex
- In the highest quartile for Sussex
- No comparison made

(lowest or highest quartile does not mean good or bad)

Better health and care for all

Planned Care Alternatives and Cancer Care – Wealden ICT

- The rate of advice and guidance referrals is worse than the Sussex average
- Lower GI suspected cancer referrals for Wealden ICT patients is better than the Sussex average



Better health and care for all

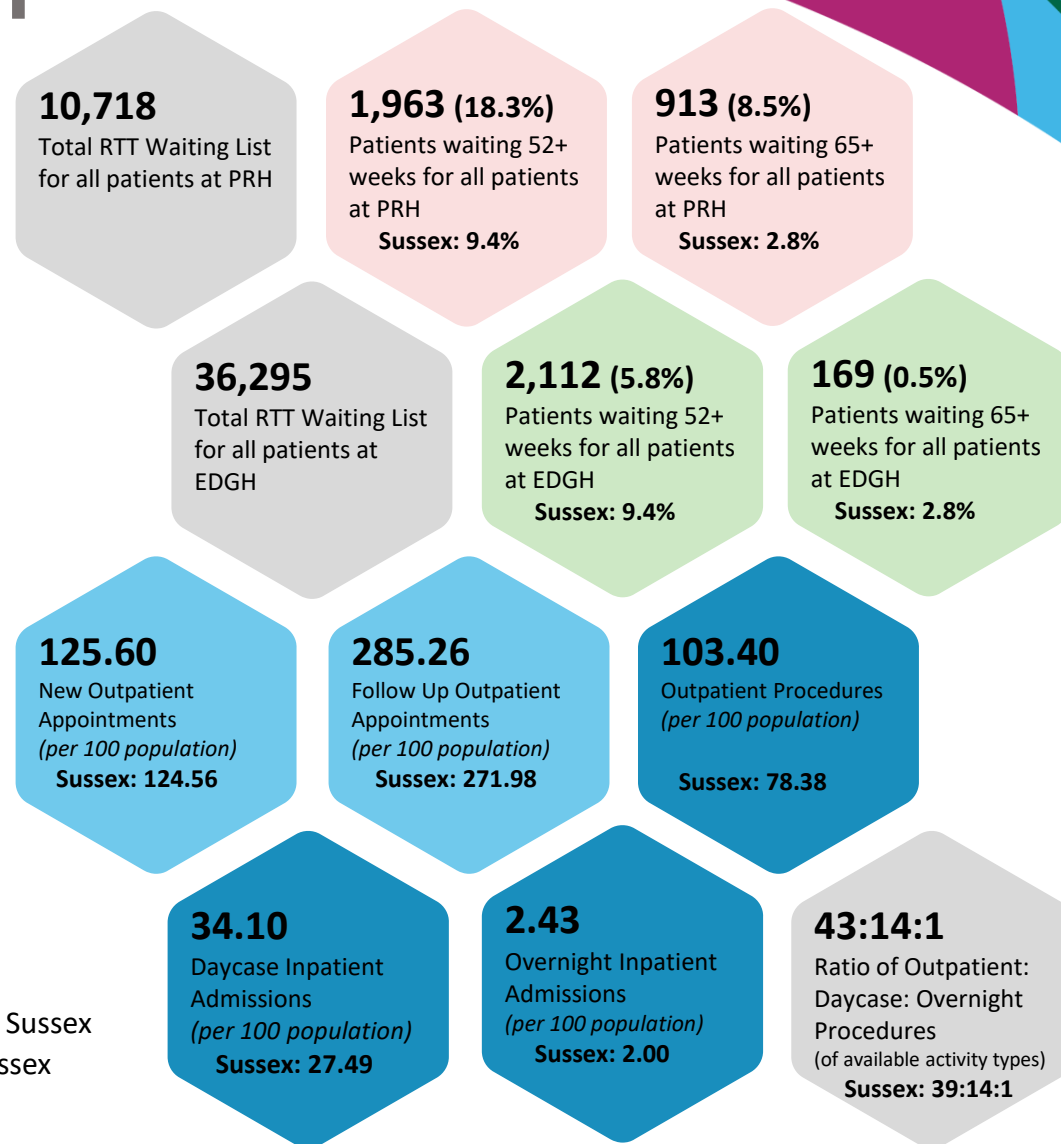
Acute Planned Care – Wealden ICT

- Wealden ICT patients have a significantly higher level of patients waiting both over 52 weeks and 65 weeks for Elective Acute care at PRH
- Whereas Wealden ICT patients waiting for treatment at EDGH, for the same periods, have lower than average waiting times.
- Compared to Sussex as a whole, Wealden ICT has higher rates for
 - Outpatient procedures
 - Daycase IP admissions
 - Overnight IP admissions

Key

- Better than Sussex Average
- At Sussex Average
- Worse than Sussex Average
- In the lowest number quartile for Sussex
- In the inter-quartile period for Sussex
- In the highest quartile for Sussex
- No comparison made

(lowest or highest quartile does not mean good or bad)



Figures above are for the full year 22/23 unless stated otherwise

Better health and care for all

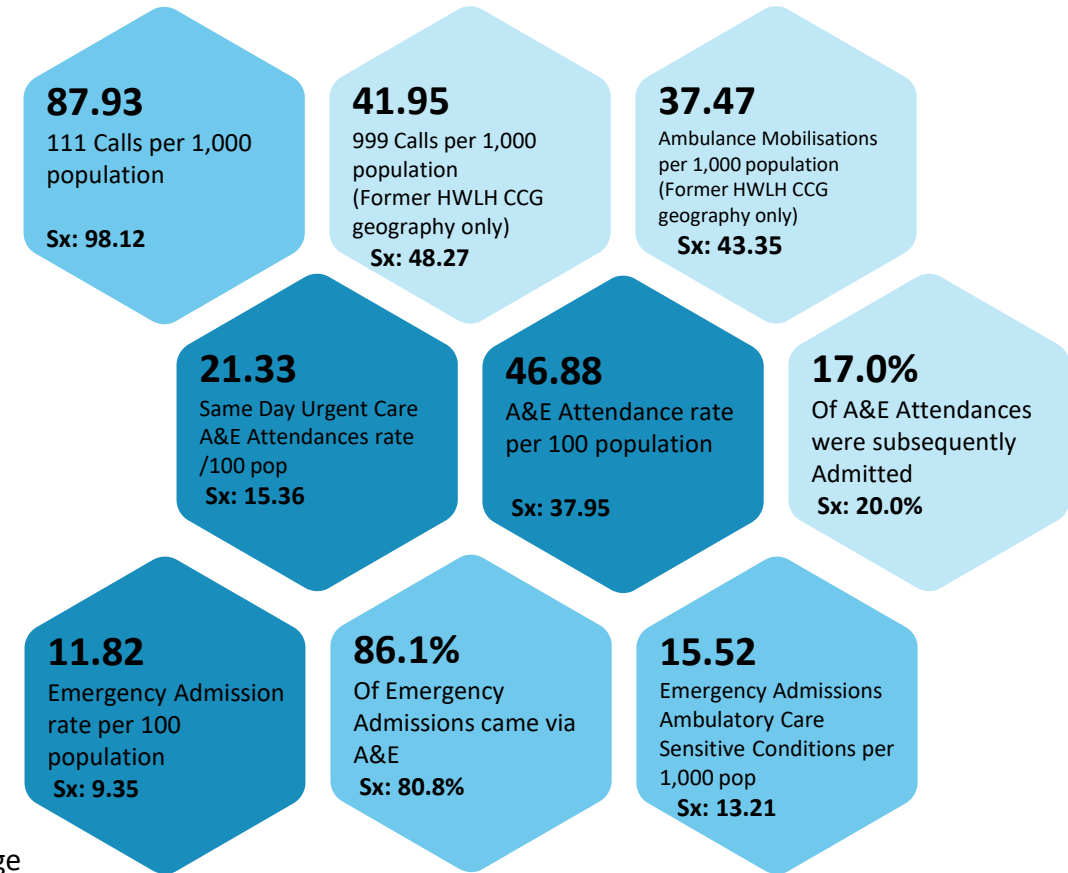
Urgent and Emergency Care – Wealden ICT

- Wealden ICT A&E attendances for Same Day Urgent Care is significantly higher than the Sussex average
- Both A&E attendance rate and Emergency Admissions rates are higher than the Sussex average

Key

- Better than Sussex Average
- At Sussex Average
- Worse than Sussex Average
- In the lowest number quartile for Sussex
- In the inter-quartile period for Sussex
- In the highest quartile for Sussex
- No comparison made

(lowest or highest quartile does not mean good or bad)

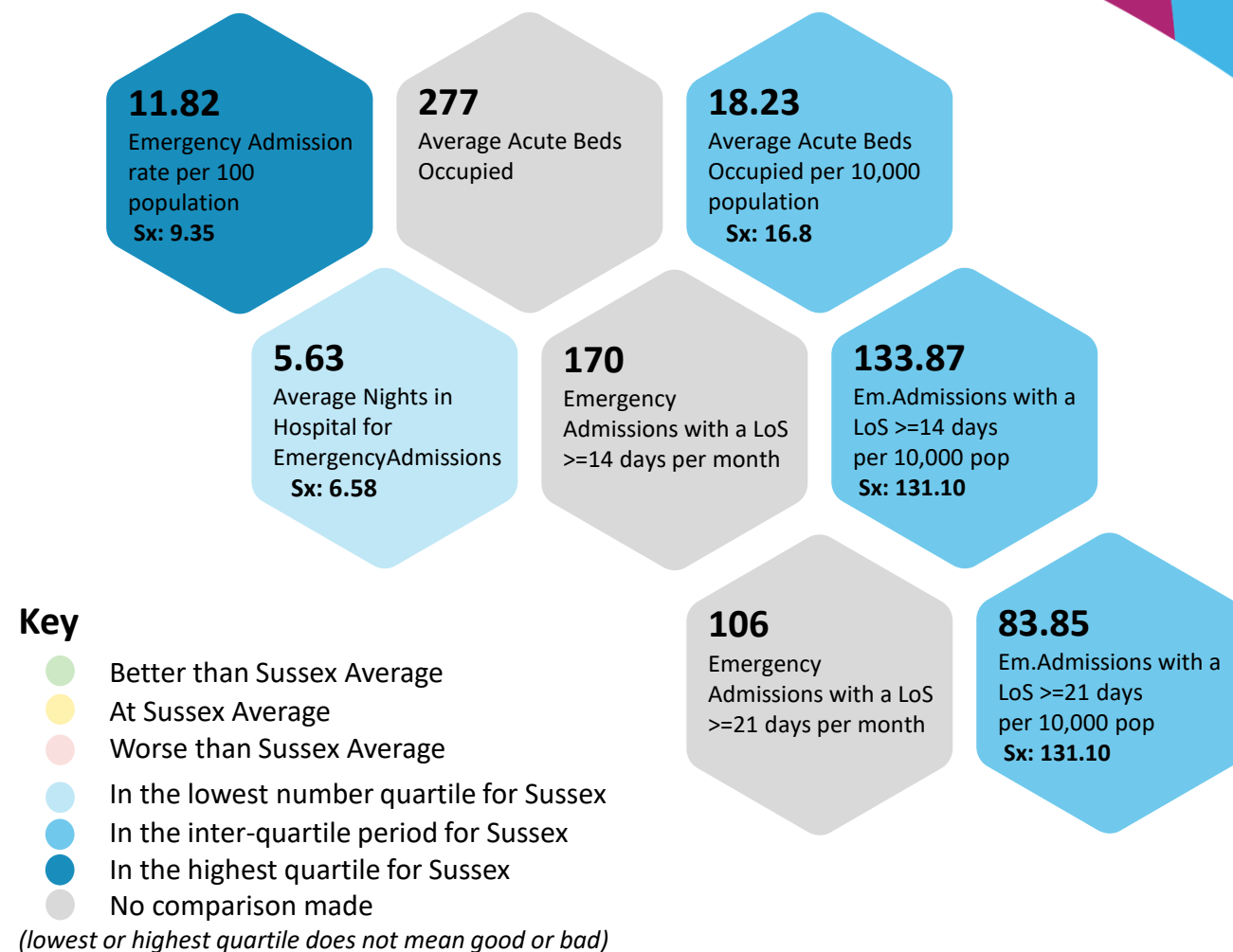


Figures above are for the full year 22/23

Better health and care for all

Acute Inpatient Emergency Care – Wealden ICT

- The rate of Emergency Admission by Wealden ICT patients is higher than the Sussex average
- When they are admitted, the number of nights patients spend in hospital is lower than the Sussex average

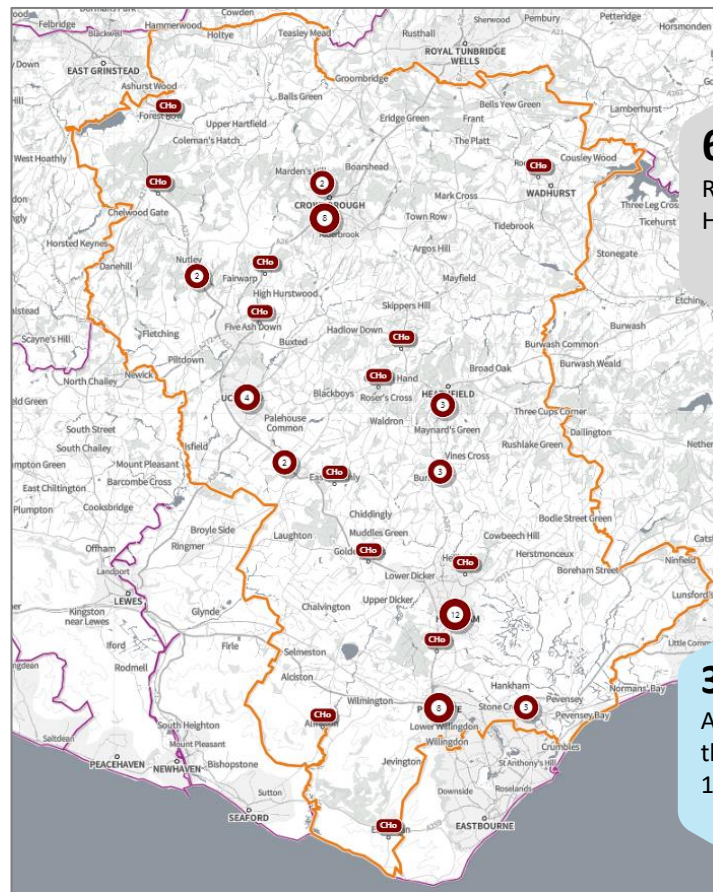


Figures above are for the full year 22/23 unless stated otherwise

Better health and care for all

Care Homes: Urgent Healthcare use – Wealden ICT

- The percentage of Hear and Treat calls Wealden ICT patients is lower than the Sussex average
- Wealden ICT A&E attendances in the past year per 100 beds were lower than the Sussex average



Key

- In the lowest number quartile for Sussex
- In the inter-quartile period for Sussex
- In the highest quartile for Sussex
- No comparison made

(lowest or highest quartile does not mean good or bad)

60

Registered Care Homes

2,598

Care Home Beds

1,472

999 Calls from Care Homes in last 12 months

6.8%

of 999 calls were Hear & Treat

Sussex: 8.0%

39.9%

of 999 calls were See and Treat

Sussex: 38.6%

53.3%

of 999 calls were See & Convey

Sussex: 53.4%

36.10

A&E Attendances in the last 12 months per 100 beds

Sussex: 53.60

50.5%

of A&E Attendances were subsequently admitted to an Inpatient bed

Sussex: 54.8%

37.84

Emergency Admissions in the last 12 months per 100 beds

Sussex: 36.08

12.51

Emergency Admissions for Respiratory in the last 12 months per 100 beds

Sussex: 13.01

5.39

Emergency Admissions for Injuries following Falls in the last 12 months per 100 beds

Sussex: 5.20

1.23

Emergency Admissions for Non Injurious Falls in the last 12 months per 100 beds

Sussex: 1.63

Better health and care for all

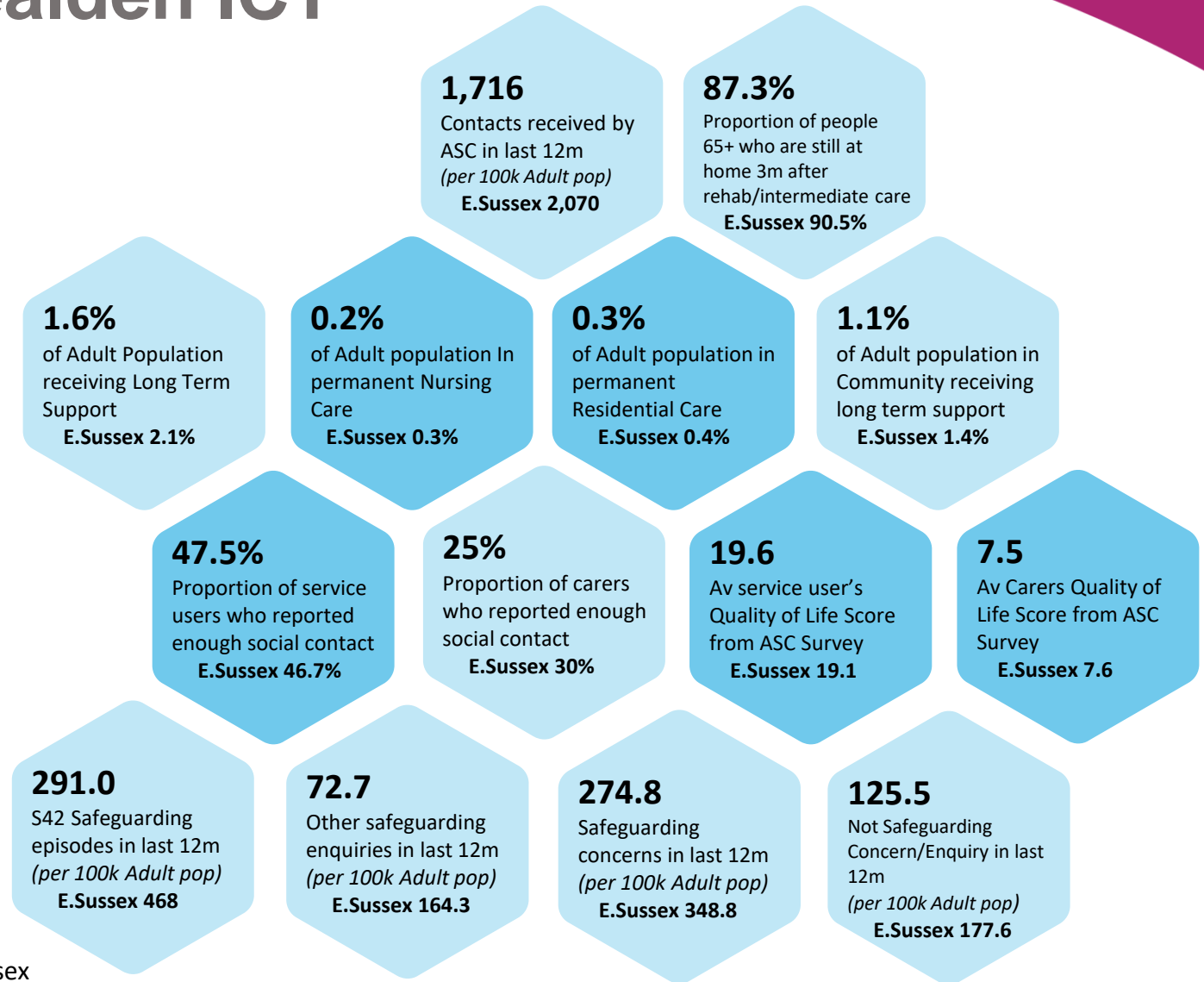
Adult Social Care – Wealden ICT

- This social care data compares Wealden ICT to East Sussex levels
- There were fewer contacts received by adult social care from Wealden ICT than the East Sussex average
- The proportion of the Rother ICT population receiving Long Term Support is lower than the East Sussex Average
- The proportion of the Rother ICT population in community receiving Long Term Support is lower than the East Sussex Average
- A lower percentage of carers report enough social contact.
- Lower levels of S42 safeguarding episodes, other safeguarding enquiries and concerns

Key

- In the lowest Quartile for Sussex
- In the inter-quartile period for Sussex
- In the highest quartile for Sussex
- No comparison made

(lowest or highest quartile does not mean good or bad)



Better health and care for all

Links to key resources

Local mappings sites

- Community insight – Brighton & Hove [Local Insight \(communityinsight.org\)](https://communityinsight.org)
- East Sussex in figures [Welcome to ESiF \(eastsussexinfigures.org.uk\)](https://eastsussexinfigures.org.uk)

JSNAs

- Brighton & Hove [Joint Strategic Needs Assessment \(JSNA\) \(brighton-hove.gov.uk\)](https://brighton-hove.gov.uk)
- East Sussex [East Sussex Joint Strategic Needs Assessment | \(eastsussexjsna.org.uk\)](https://eastsussexjsna.org.uk)
- West Sussex [Welcome to the West Sussex JSNA - West Sussex JSNA Website](https://www.westsussexjsna.org.uk)

National tools with local area data

- SHAPE tool [SHAPE - Shape \(shapeatlas.net\)](https://shapeatlas.net) (registration required)
- Fingertips Public Health Profiles [Public health profiles - OHID \(phe.org.uk\)](https://phe.org.uk)
- Census area profile builder [Build a custom area profile - Office for National Statistics \(ons.gov.uk\)](https://ons.gov.uk)

NHS Sussex ICB

- Sussex Insight bank <https://int.sussex.ics.nhs.uk/nhs-sussex/tools-for-your-work/insight-bank/>
- [ICB Information Station](#)