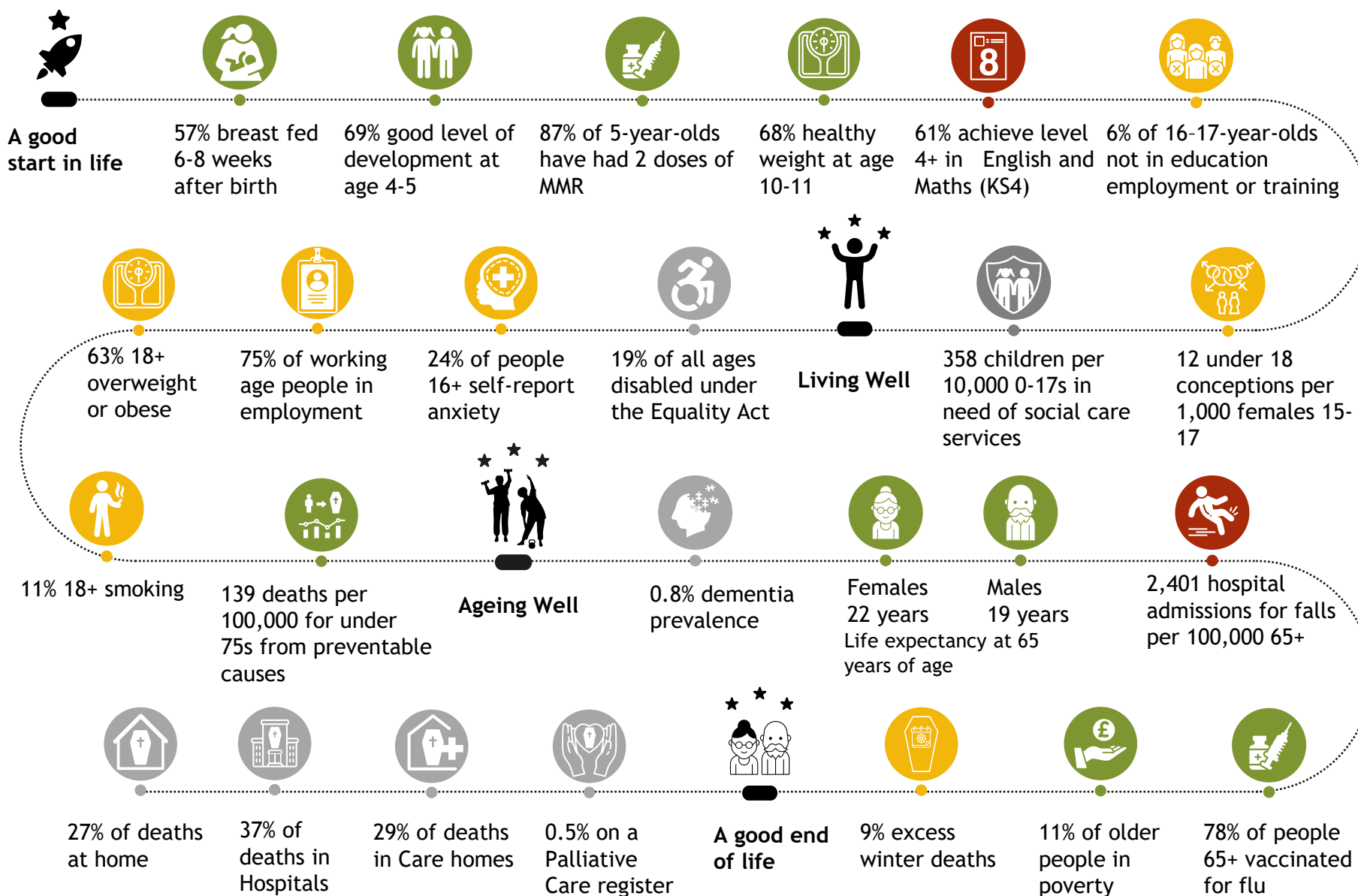


East Sussex life course statistics 2025

Summary document 2025



East Sussex facts

Population

Total: 555,500
0-17 years: 103,600
18-64 years: 304,850
65+ years: 147,000

Deprivation

77,800 residents in East Sussex live in the most deprived 20% of areas in England

Key

Compared to England

- Worse
- Similar
- Better
- No Comparison available