

Adult Social Care Population Profile

West profile

Developed by Public Health Intelligence Team

Version 2.3 March 2026

West profile



Introduction



This profile has been produced by the Public Health Intelligence team.



A lot of the data has been sourced from the 2021 Census, which is updated every ten years, but other more recent data will be refreshed in this pack more frequently.



You can find more information about populations in East Sussex from [East Sussex in Figures](#) which has data, profiles and reports that go into more detail on many of the topics contained in this profile.

Key findings

- Older population profile, particularly in Seaford and parts of Eastbourne, with higher % of veterans.
- Eastbourne is the most ethnically diverse area in East Sussex with the highest % not speaking English well or at all
- Higher % disabled in Seaford, Hampden Park, Langney and Hailsham East
- Areas of deprivation located in central Eastbourne, Hampden Park, Langney and parts of Hailsham

Contents

- Current population
- Future population
- Rurality
- Key equalities demographics
- Ethnic diversity
- Language
- Disability
- Unpaid carers
- Veterans
- People living alone
- Areas of deprivation

Populations

Mid-2022 resident population estimates by age band, ONS

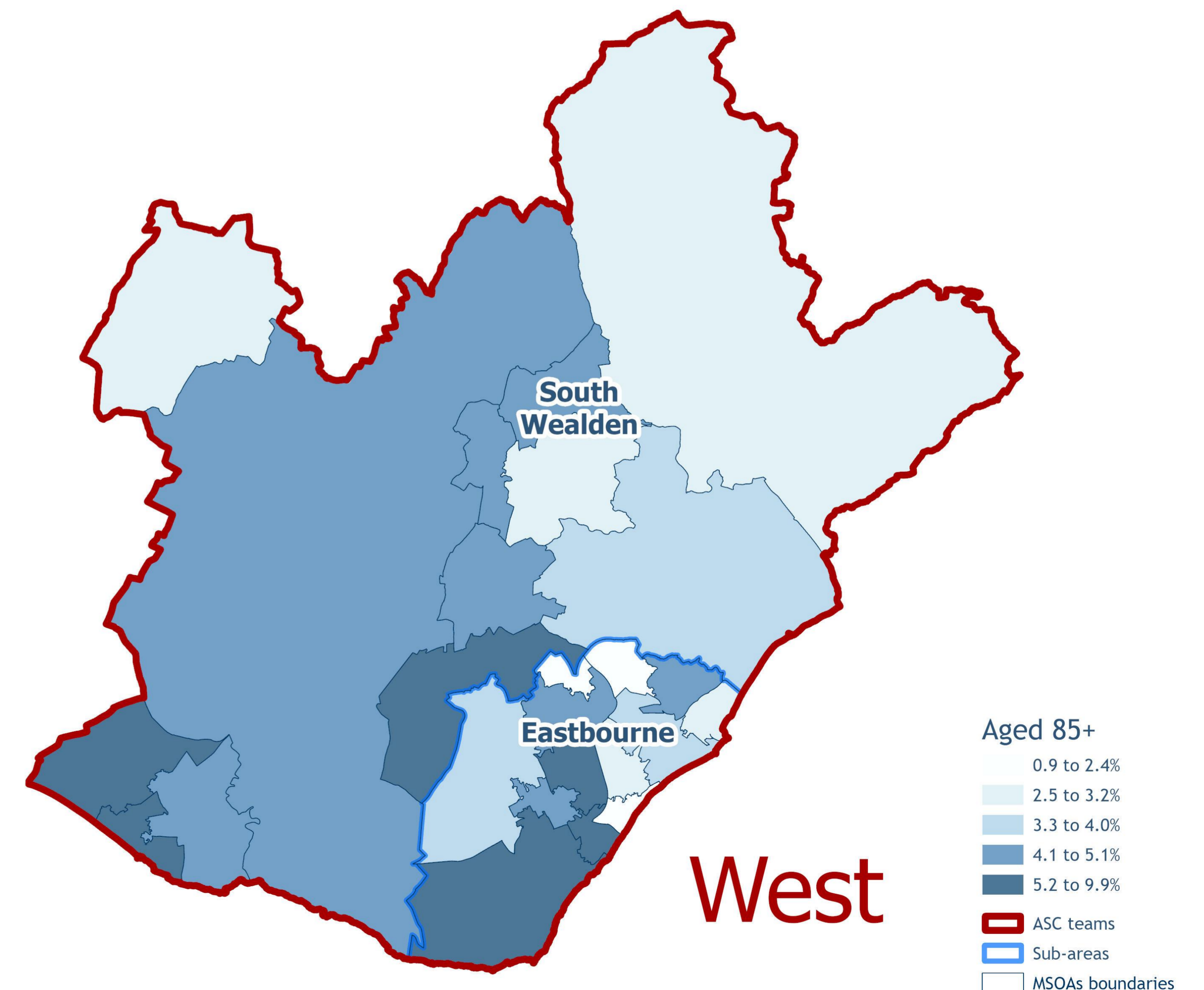
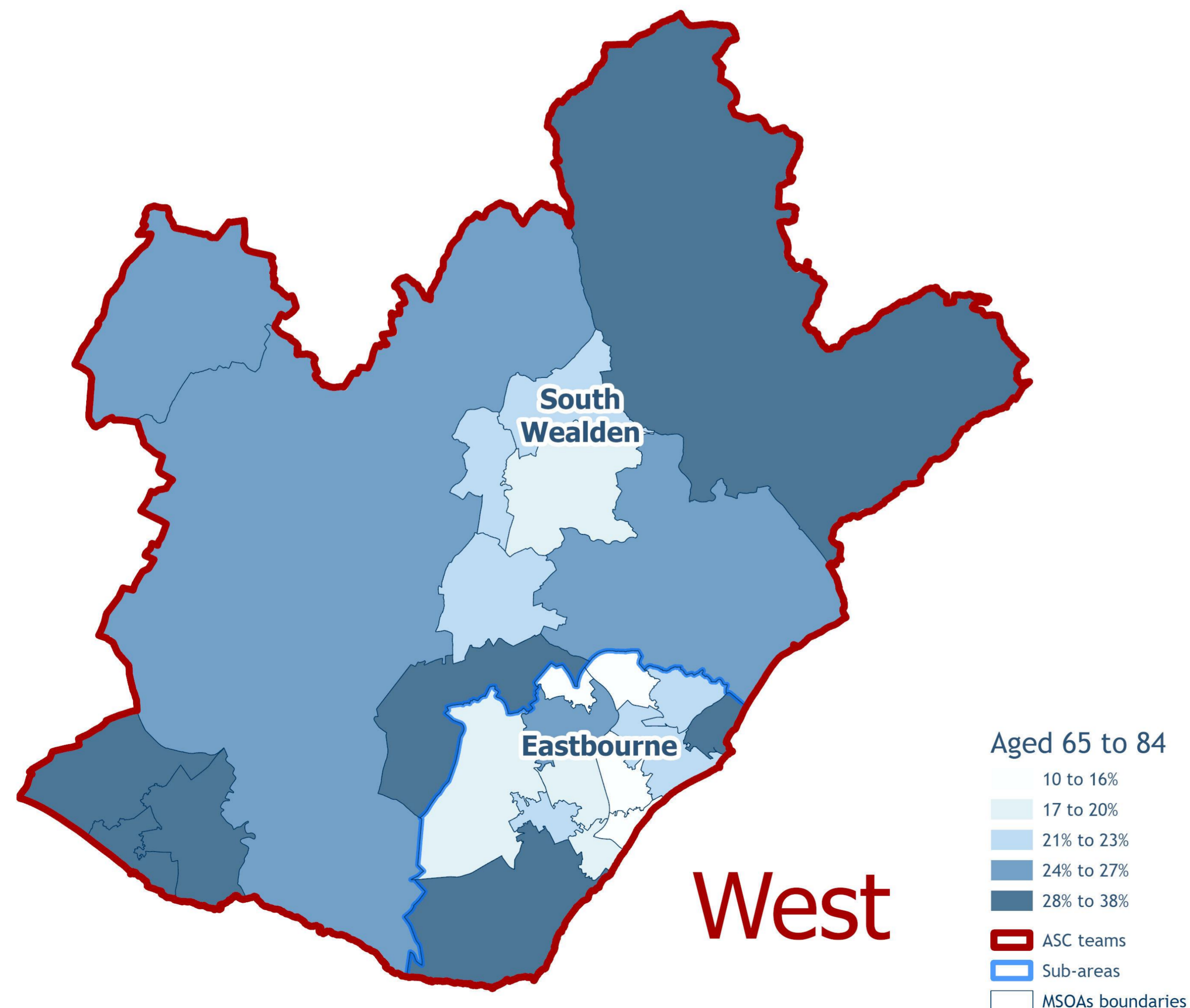
ASC Team	ASC sub-area	0-19		20-64		65-84		85+		All ages
		Number	%	Number	%	Number	%	Number	%	
West	Eastbourne	21,595	21%	55,445	54%	21,125	21%	4,199	4.1%	102,364
	South Wealden	17,985	19%	46,884	51%	23,242	25%	4,246	4.6%	92,357
West Total		39,580	20%	102,329	53%	44,367	23%	8,445	4.3%	194,721
East Sussex Total		113,289	21%	292,276	53%	124,043	23%	21,399	3.9%	551,007

Older age

Mid-2022 resident population estimates by age band, ONS

Aged 65-84

Aged 85+



Future population

Older age groups are projected to increase at a faster rate than younger age groups across the county.

East Sussex Population projections, ESCC. County level only.



Projected older population by age group, 2023-2038

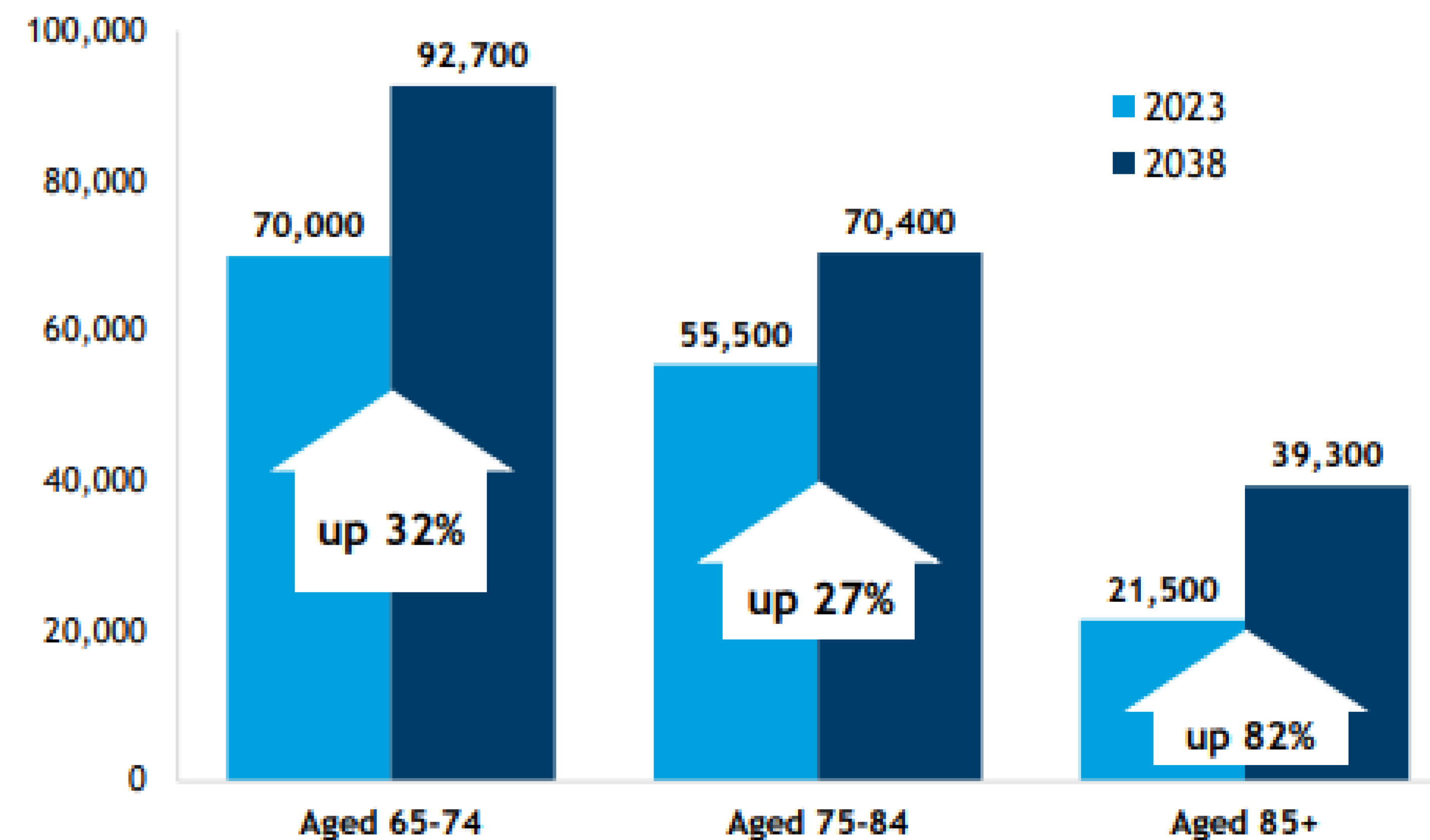
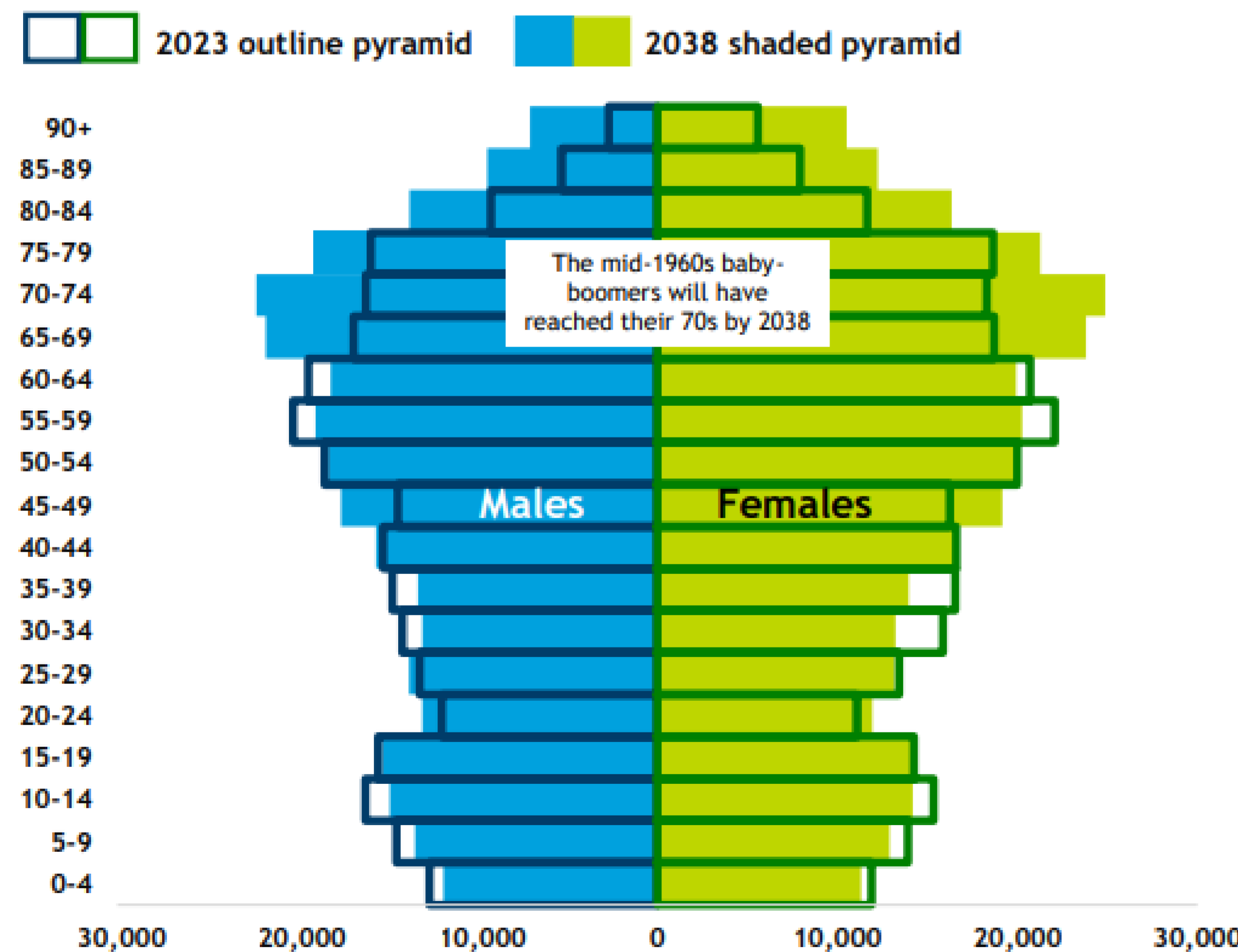
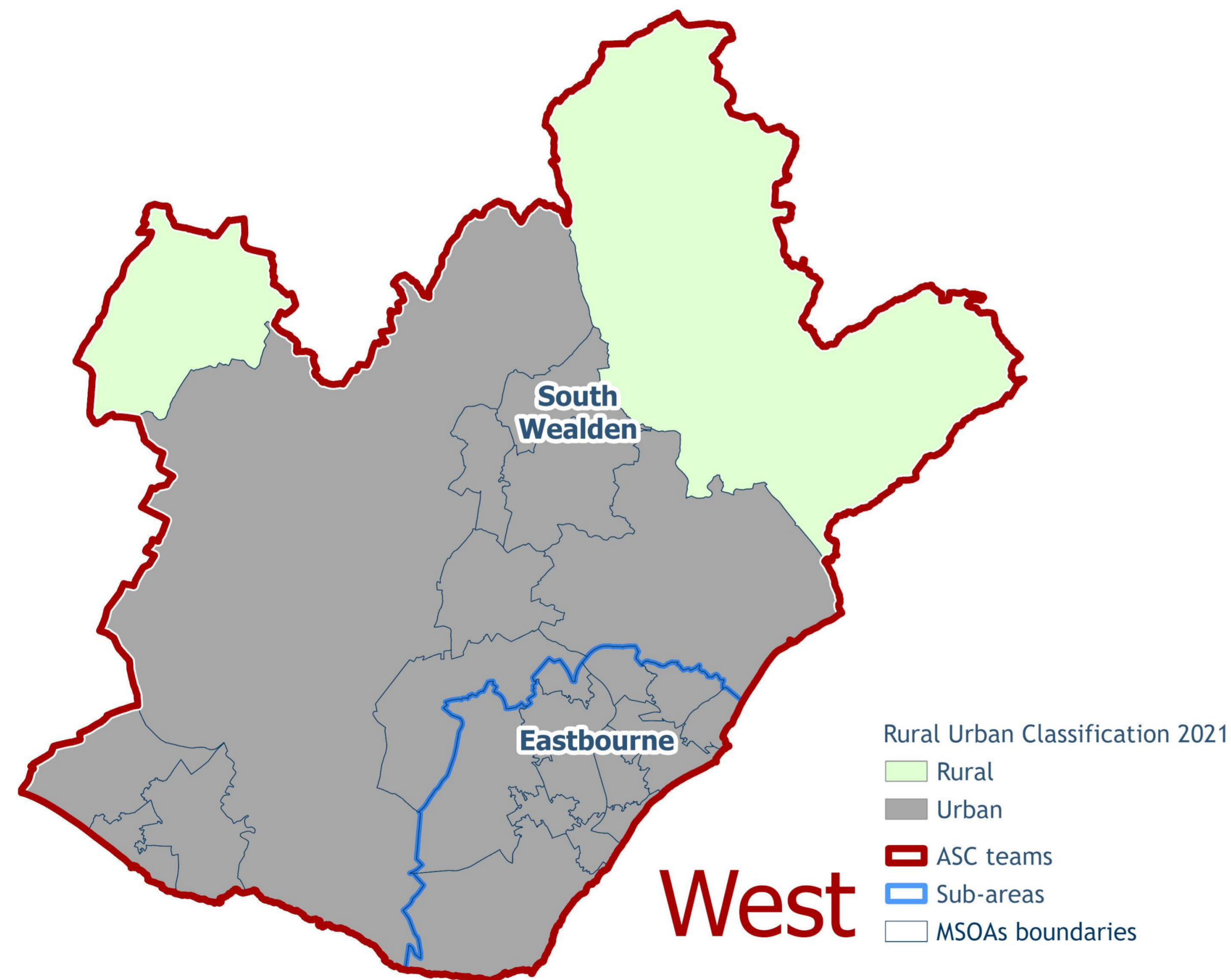


Fig. 1: East Sussex population in 2023 and 2038, by age and sex



Eastbourne is one of the most populous urban areas in East Sussex

Rural / Urban classifications from 2021 Census, ONS



ASC Team	ASC sub-area	Rural areas Population	%	Urban areas Population	%
West	Eastbourne		0%	102,364	100%
	South Wealden	6,550	7%	85,807	93%
West Total		6,550	3%	188,171	97%
East Sussex Total		121,557	22%	429,450	78%

Further info:

[East Sussex in Figures – Data Observatory – Welcome to East Sussex in Figures – Local Reports – Intelligence Briefings – Rural Urban Classification](#)

Key Equalities Demographics

2021 Census data unless otherwise stated

		England	East Sussex	West
Age (2022)	0-19	23%	21%	20%
	20-64	58%	53%	53%
	65+	19%	26%	27%
Ethnicity	Ethnically minoritised	27%	12%	13%
	Asian or Asian British	10%	2%	3%
	Black or Black British	4%	1%	1%
	Mixed or multiple ethnic group	3%	2%	2%
	Arab or any other group	1%	1%	1%
	White Irish or White other	8%	6%	6%
Religion	No religion or belief	37%	45%	44%
	Christian	46%	46%	47%
	Muslim	6.7%	1.1%	1.5%
	Jewish	0.5%	0.2%	0.2%
	Buddhist	0.5%	0.5%	0.5%
	Hindu	1.8%	0.3%	0.4%
	Sikh	0.9%	0.0%	0.0%
	Other religion	0.6%	0.8%	0.7%
Pregnancy & maternity (2024)	Live births		4,252	1,563
Sex (2022)	Female	51.0%	52.0%	52.3%
	Male	49.0%	48.0%	47.7%
Gender identity	Trans*	0.4%	0.3%	n/a
Sexual orientation	LGB+	3.2%	3.3%	n/a
Language	English is not main language	9.2%	3.7%	4.8%
	Do not speak English well	1.6%	0.5%	0.7%
Disability	Disabled	17%	20%	21%
Veterans	Veterans	3.8%	4.6%	5.0%
Marriage / civil partnership	Marriage / civil partnership	45%	47%	46%
	Never married/civil partnership	38%	32%	32%
	Separated	2%	2%	2%
	Divorced/civil partnership dissolved	9%	11%	11%
	Widowed / surviving civil partnership partner	6%	8%	8%
Carers	Unpaid carer	9.0%	9.9%	10.0%

Whilst East Sussex is generally not as diverse as England overall, it has higher % of older people, disabled people, veterans and unpaid carers

Further info:

[East Sussex in Figures – Equalities summary and reports](#)

Ethnic diversity

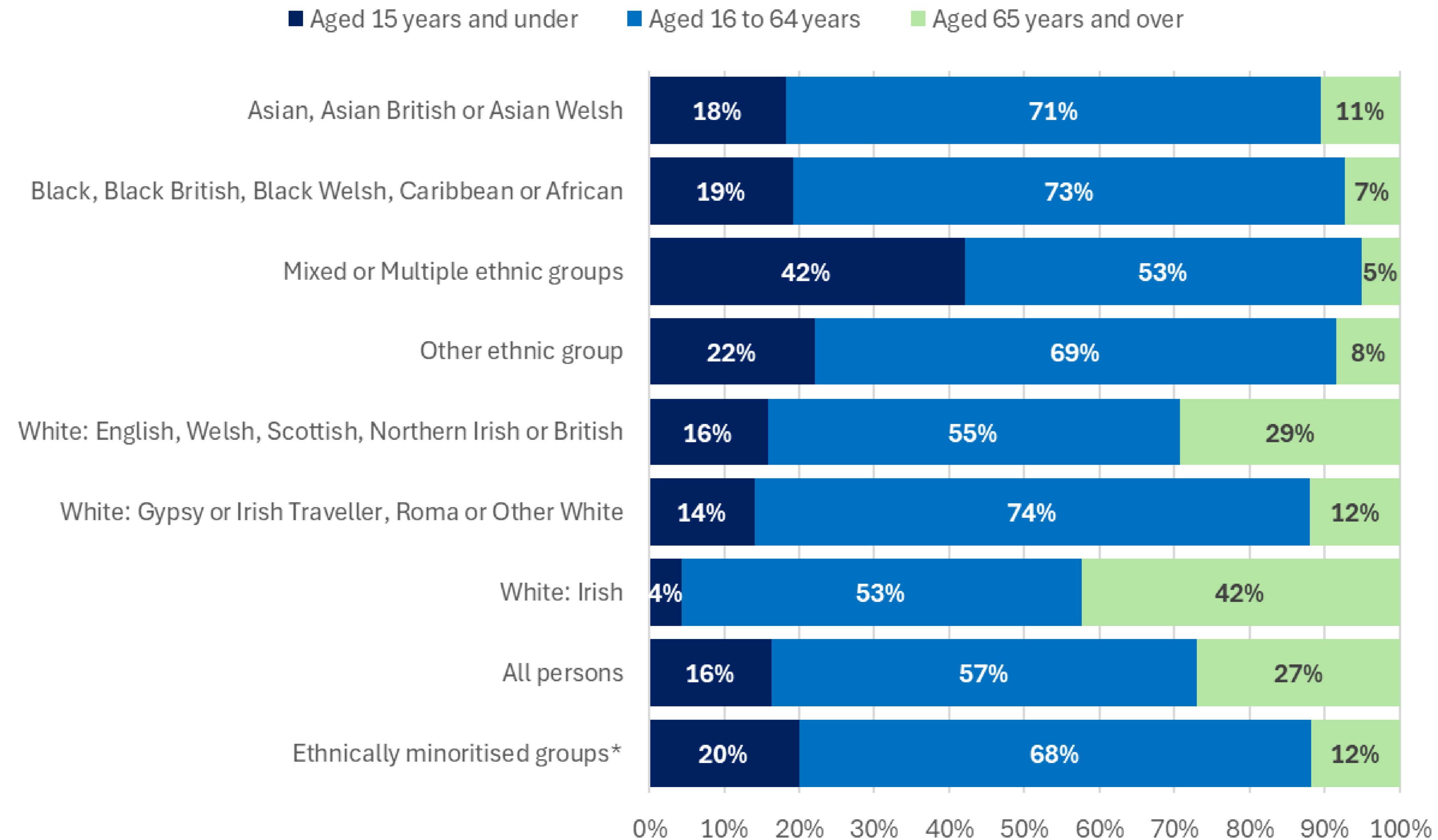
2021 Census, ONS

Ethnic group	Eastbourne		South Wealden		West Total	
	Number	%	Number	%	Number	%
White: English, Welsh, Scottish, Northern Irish or British	83,466	82.1%	84,080	92.5%	167,546	87.0%
White: Gypsy or Irish Traveller, Roma or Other White	7,918	7.8%	2,698	3.0%	10,616	5.5%
Asian, Asian British or Asian Welsh	3,551	3.5%	1,343	1.5%	4,894	2.5%
Mixed or Multiple ethnic groups	2,802	2.8%	1,415	1.6%	4,217	2.2%
Other ethnic group	1,680	1.7%	406	0.4%	2,086	1.1%
Black, Black British, Black Welsh, Caribbean or African	1,311	1.3%	345	0.4%	1,656	0.9%
White: Irish	961	0.9%	634	0.7%	1,595	0.8%
All persons	101,689	100.0%	90,921	100.0%	192,610	100.0%
Ethnically minoritised groups*	18,223	17.9%	6,841	7.5%	25,064	13.0%

**Includes all groups other than White: English, Welsh, Scottish, Northern Irish or British*

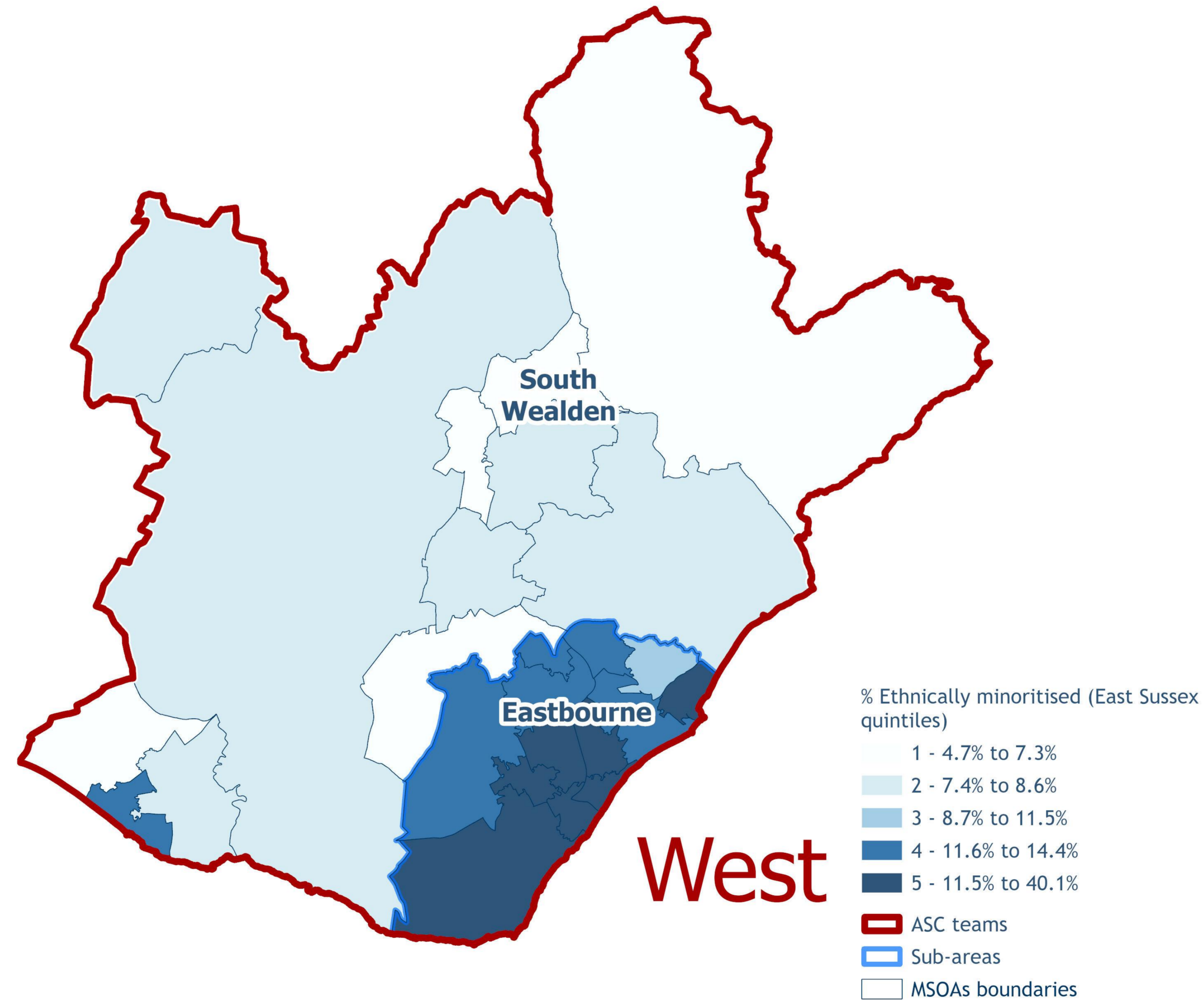
Ethnic diversity by age

West Team data, 2021 Census, ONS



Ethnic diversity..

Ethnically minoritised population*, 2021 Census, ONS



Eastbourne is the most ethnically diverse area in East Sussex

© Crown copyright and database rights 2025. OS AC000808855

2021 Census data, ONS

English proficiency by age group

		Number who cannot speak English or cannot speak English well by age				% aged 3+ years who cannot speak English or cannot speak English well
ASC Team	ASC sub-area	Aged 3 to 15 years	Aged 16 to 64 years	Aged 65 years and over	All aged 3+	
West	Eastbourne	99	847	210	1,156	1.2%
	South Wealden	14	139	25	178	0.2%
West Total		113	986	235	1,334	0.7%
East Sussex Total		256	2,106	478	2,840	0.5%

Eastbourne has the highest percentage of the population who cannot speak English well in East Sussex

10 local areas with highest % Pop

MSOA Name	Number	aged 3+	%
Pier	377	8,107	4.7%
King Edward's Parade	159	7,470	2.1%
Roselands	112	8,557	1.3%
Upperton	82	6,763	1.2%
Hampden Park North	65	7,416	0.9%
Langney East	65	7,798	0.8%
Langney West	52	7,179	0.7%
Meads	44	6,658	0.7%
Sovereign Harbour	44	6,699	0.7%
St Anthony's Hill	49	8,743	0.6%

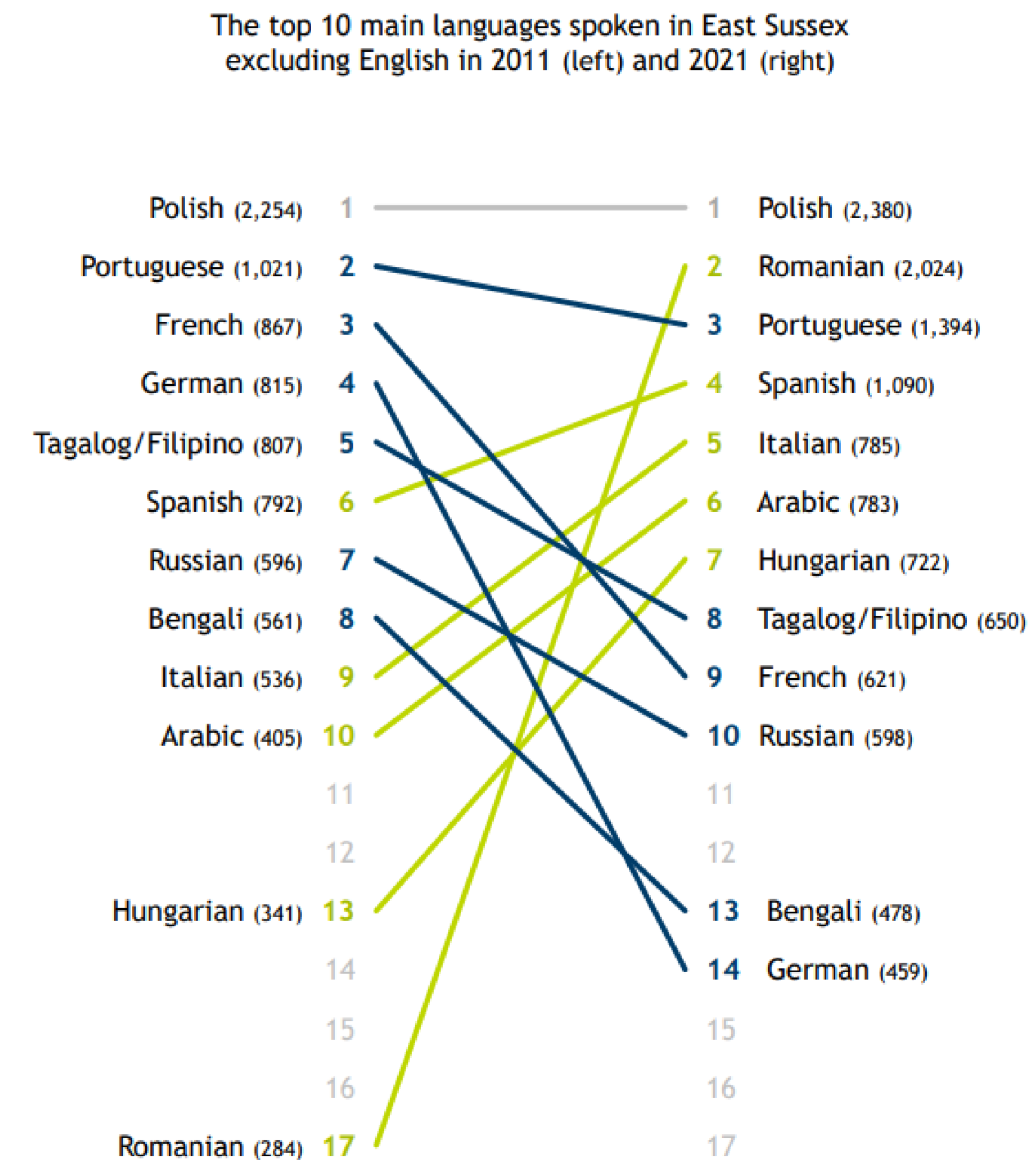
Languages

Polish was the most common foreign language spoken in 2021 followed by Romanian and Portuguese

Main language spoken in West Team

Main language	West	
	Number	%
English (English or Welsh if in Wales)	178,514	95.2%
Other European language (EU): Any other European languages	2,515	1.3%
Other European language (EU): Polish	1,333	0.7%
Portuguese	1,016	0.5%
Spanish	564	0.3%
East Asian language: Any other East Asian languages	522	0.3%
South Asian language: Any other South Asian languages	421	0.2%
Arabic	348	0.2%
Other European languages (non-EU)	305	0.2%
East Asian language: Mandarin, Cantonese and other Chinese languages	299	0.2%
West or Central Asian languages	295	0.2%
South Asian language: Bengali (with Sylheti and Chatgaya)	219	0.1%
French	203	0.1%
Turkish	196	0.1%
Russian	187	0.1%
African languages	147	0.1%
Any other languages (including sign and supported languages)	114	0.1%
South Asian language: Tamil	99	0.1%
South Asian language: Urdu	61	0.0%
South Asian language: Gujarati	59	0.0%
South Asian language: Panjabi	16	0.0%
Any other UK languages	8	0.0%

More detail at county level



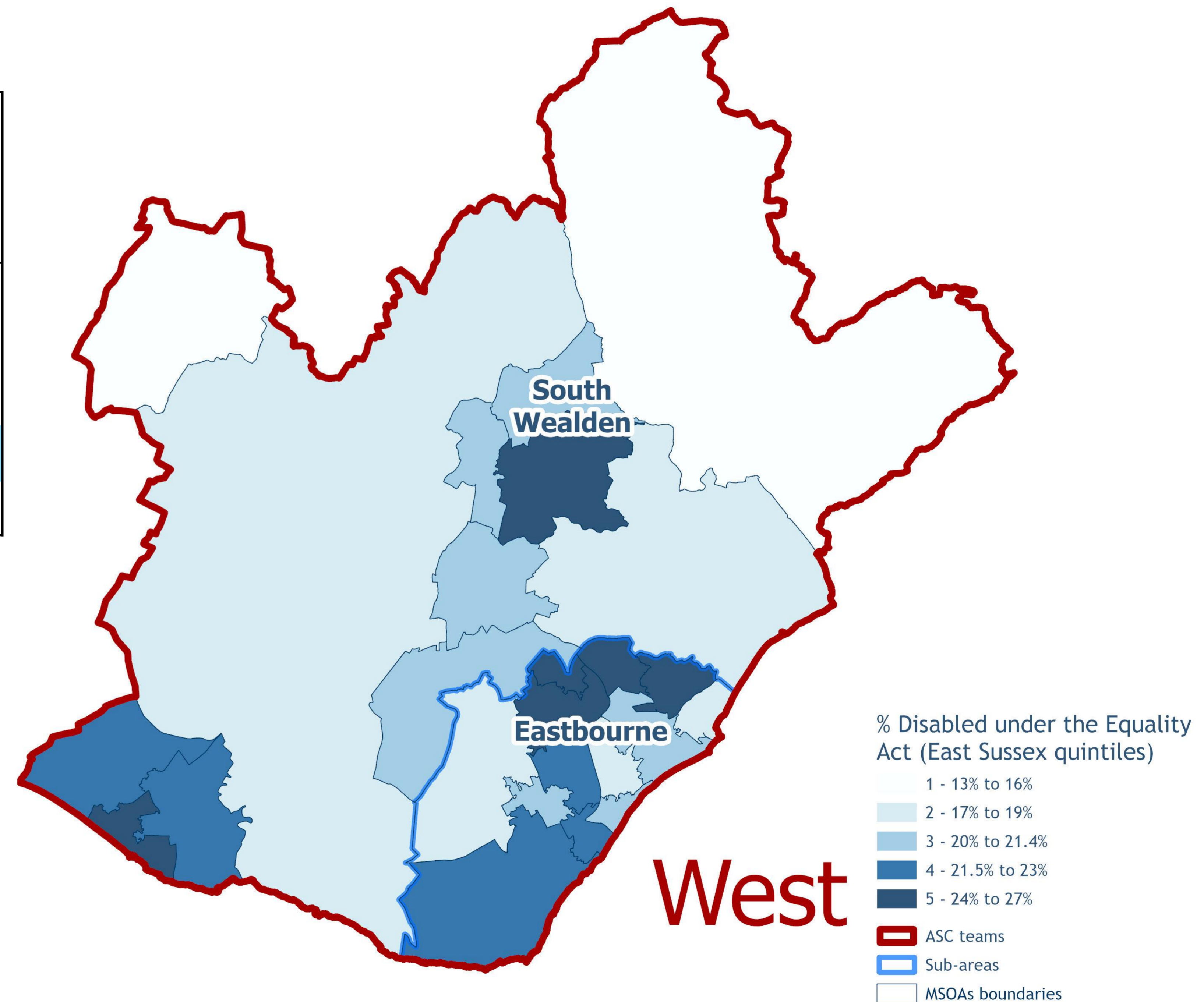
Source: ONS
Note: Bengali includes Sylheti and Chatgaya

Disability

1 in 5 people are disabled, with the highest concentrations in Seaford, Hampden Park, Langney and Hailsham East

2021 Census data, ONS

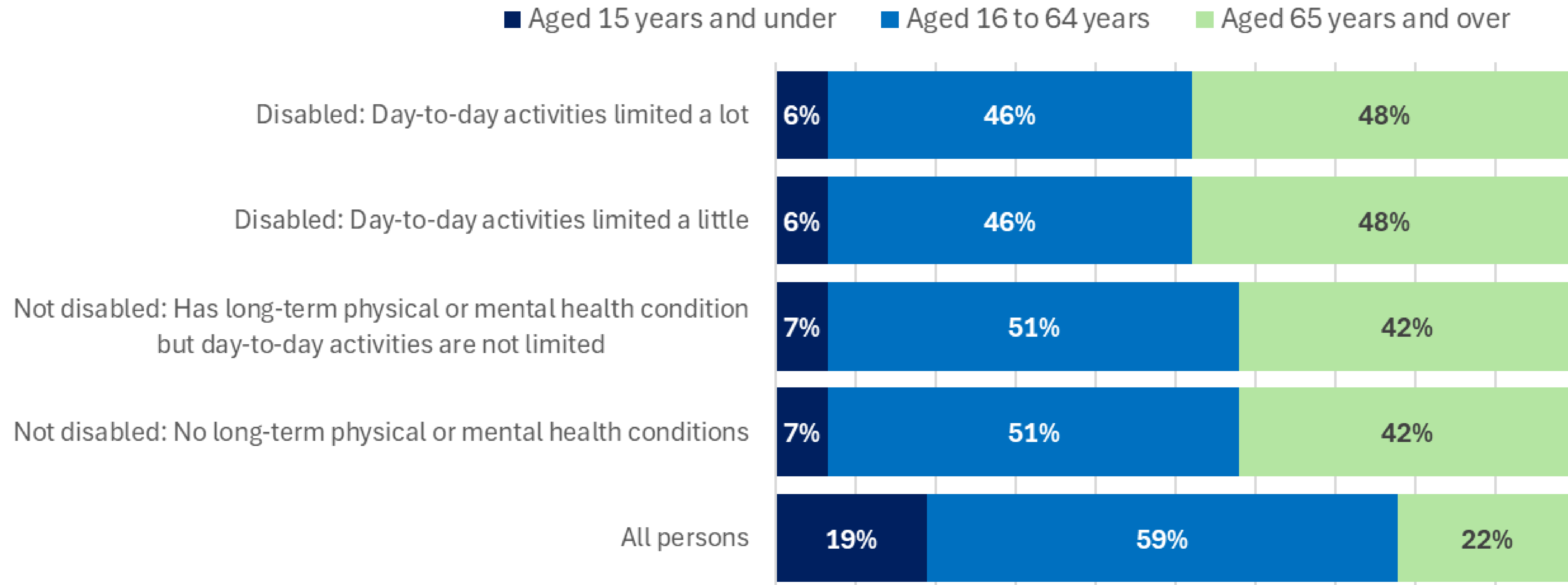
ASC Team	ASC sub-area	Disabled: Day-to-day activities limited a lot		Disabled: Day-to-day activities limited a little	
		Number	%	Number	%
West	Eastbourne	9,286	9%	12,626	12%
	South Wealden	7,387	8%	11,078	12%
West Total		16,673	9%	23,704	12%
East Sussex Total		45,189	8%	65,352	12%



[East Sussex 2021 Census Briefing: Disability](#)

Disability by age

West Team data, 2021 Census data, ONS



Unpaid carers

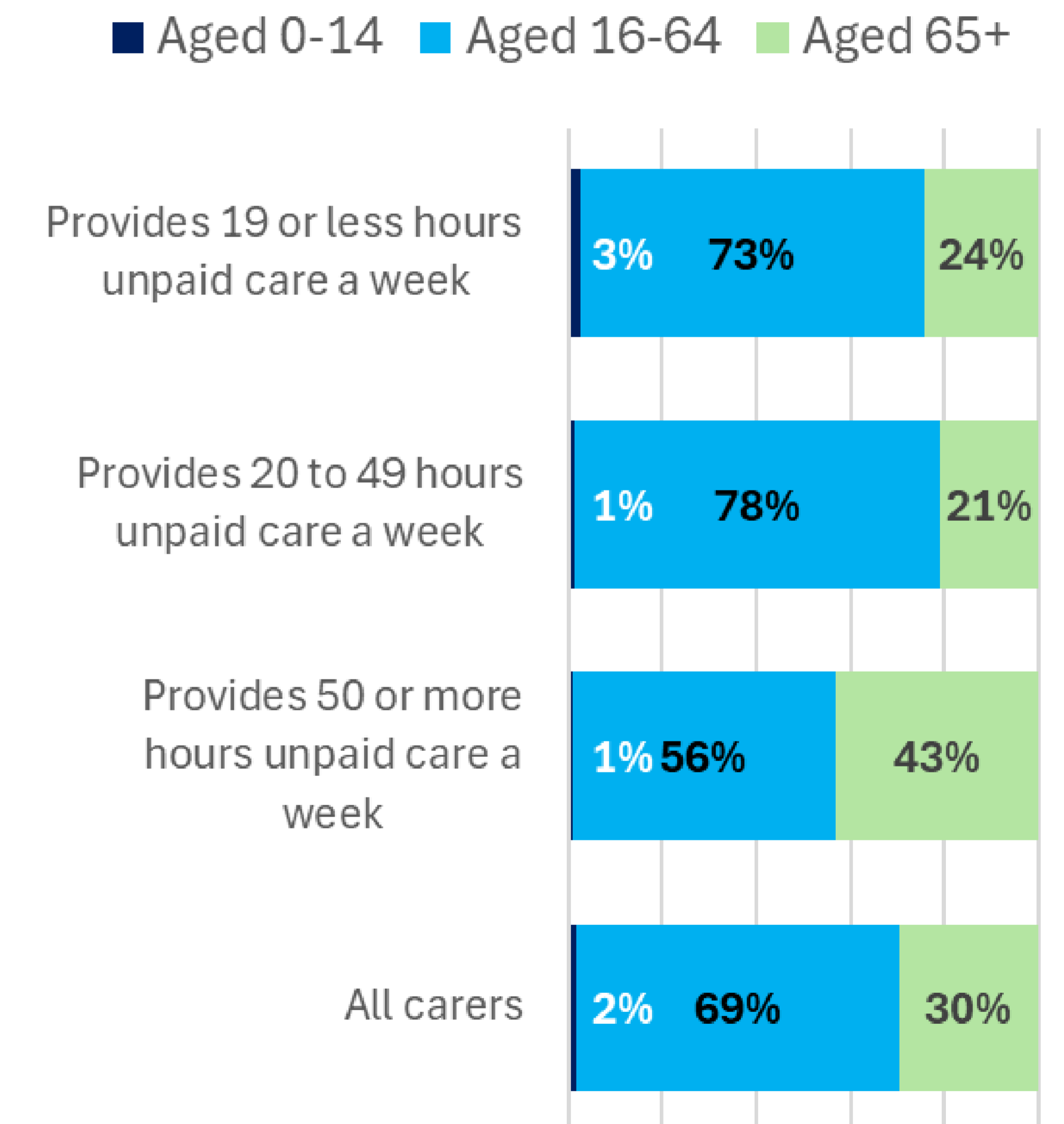
West Team data, 2021 Census data, ONS

Around 1 in 10 people in East Sussex provide unpaid care

% of the population providing unpaid care

ASC Team	ASC sub-area	Provides 19 or less hours unpaid care a week		Provides 20 to 49 hours unpaid care a week		Provides 50 or more hours unpaid care a week	
		Number	%	Number	%	Number	%
West	Eastbourne	4,344	4.5%	1,948	2.0%	3,124	3.2%
	South Wealden	4,670	5.4%	1,610	1.9%	2,749	3.2%
West Total		9,014	4.9%	3,558	1.9%	5,873	3.2%
East Sussex Total		26,128	5.0%	9,643	1.9%	15,638	3.0%

Carers by age group

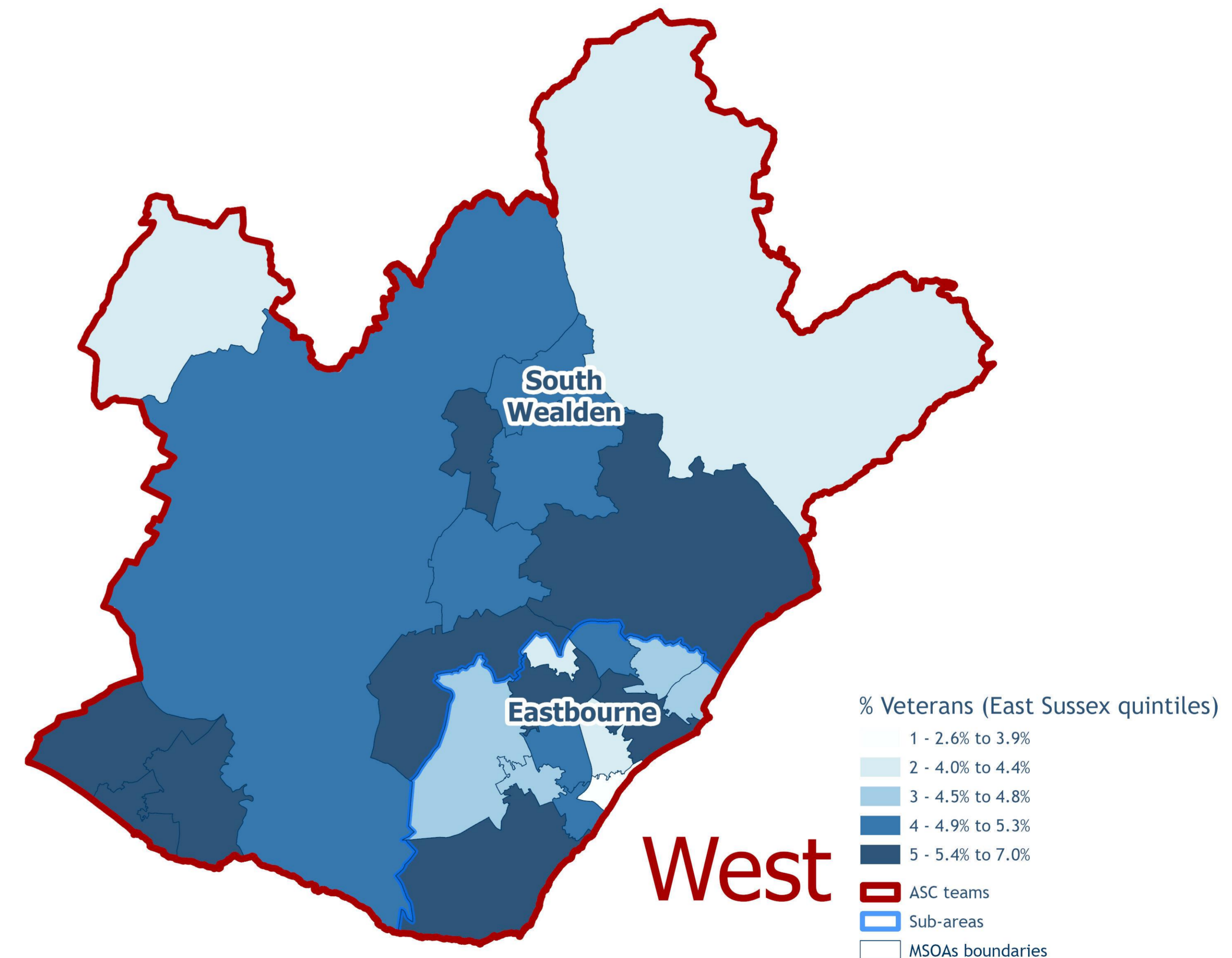


Veterans

South Wealden has the second highest % of the population who are veterans in East Sussex

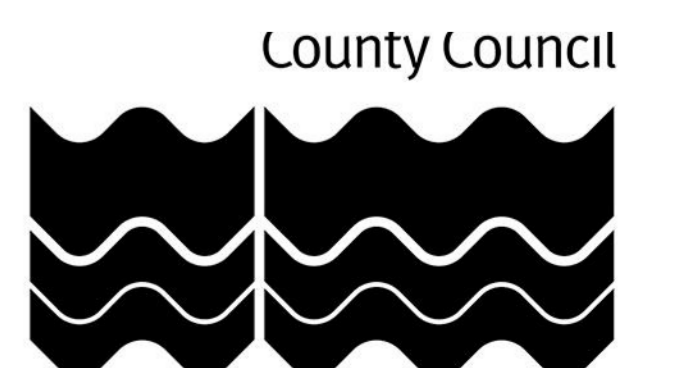
Previously served in regular and/or reserve UK armed forces
2021 Census data, ONS

ASC Team	ASC sub-area	Veterans	% of pop aged 16+
West	Eastbourne	3,986	4.7%
	South Wealden	4,092	5.3%
West Total		8,078	5.0%
East Sussex Total		21,186	4.6%



© Crown copyright and database rights 2025. OS AC000808855

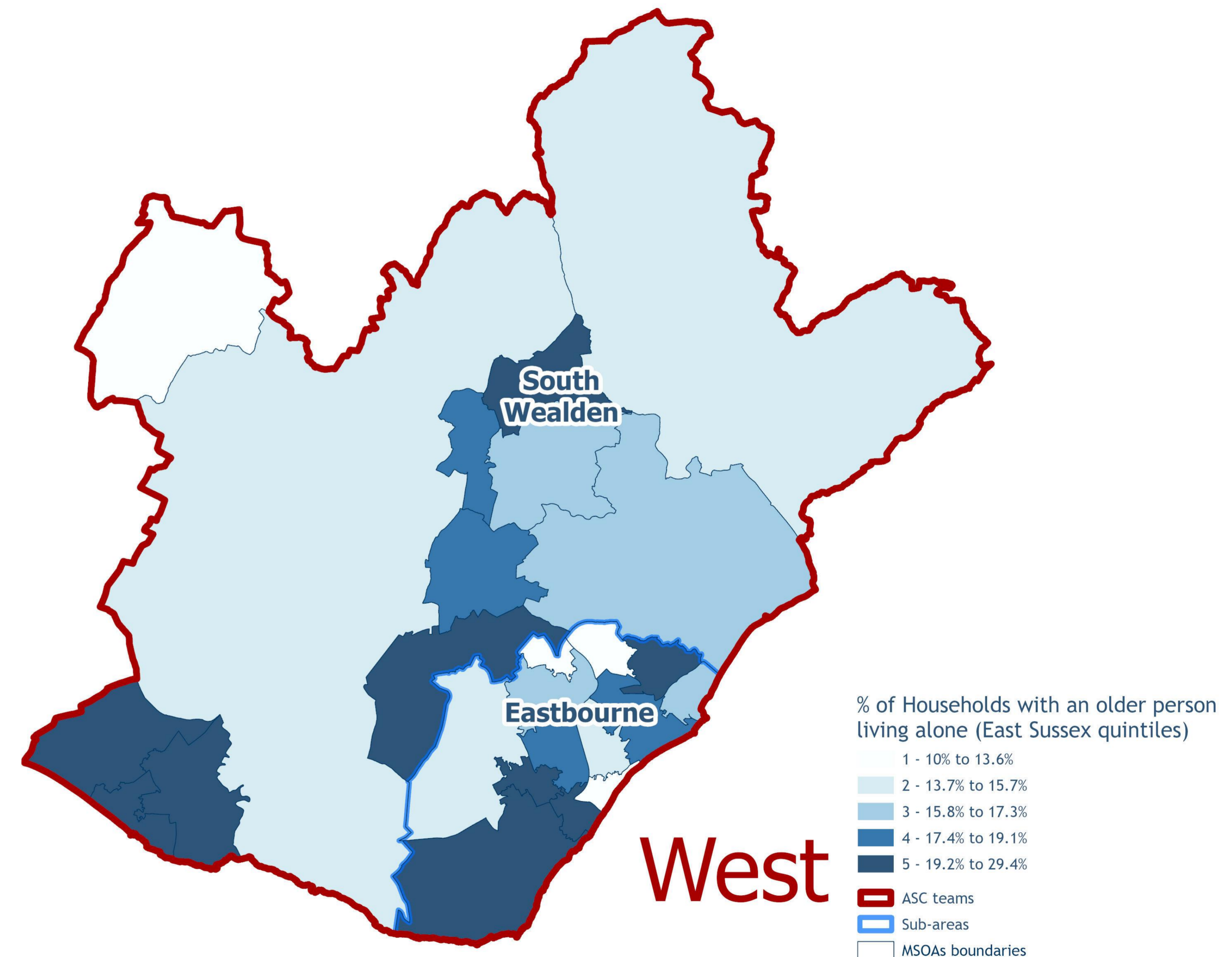
[East Sussex 2021 Census Briefing: Veterans](#)



People living alone

Older people living alone 2021 Census data, ONS

		One-person household aged 65 and under		One-person household aged 66 and over		
ASC Team	ASC sub-area	All households	Number	%	Number	%
West	Eastbourne	45,600	8,078	18%	8,124	18%
	South Wealden	40,317	4,660	12%	7,466	19%
West Total		85,917	12,738	15%	15,590	18%
East Sussex Total		240,114	35,336	15%	41,300	17%



© Crown copyright and database rights 2025. OS AC000808855

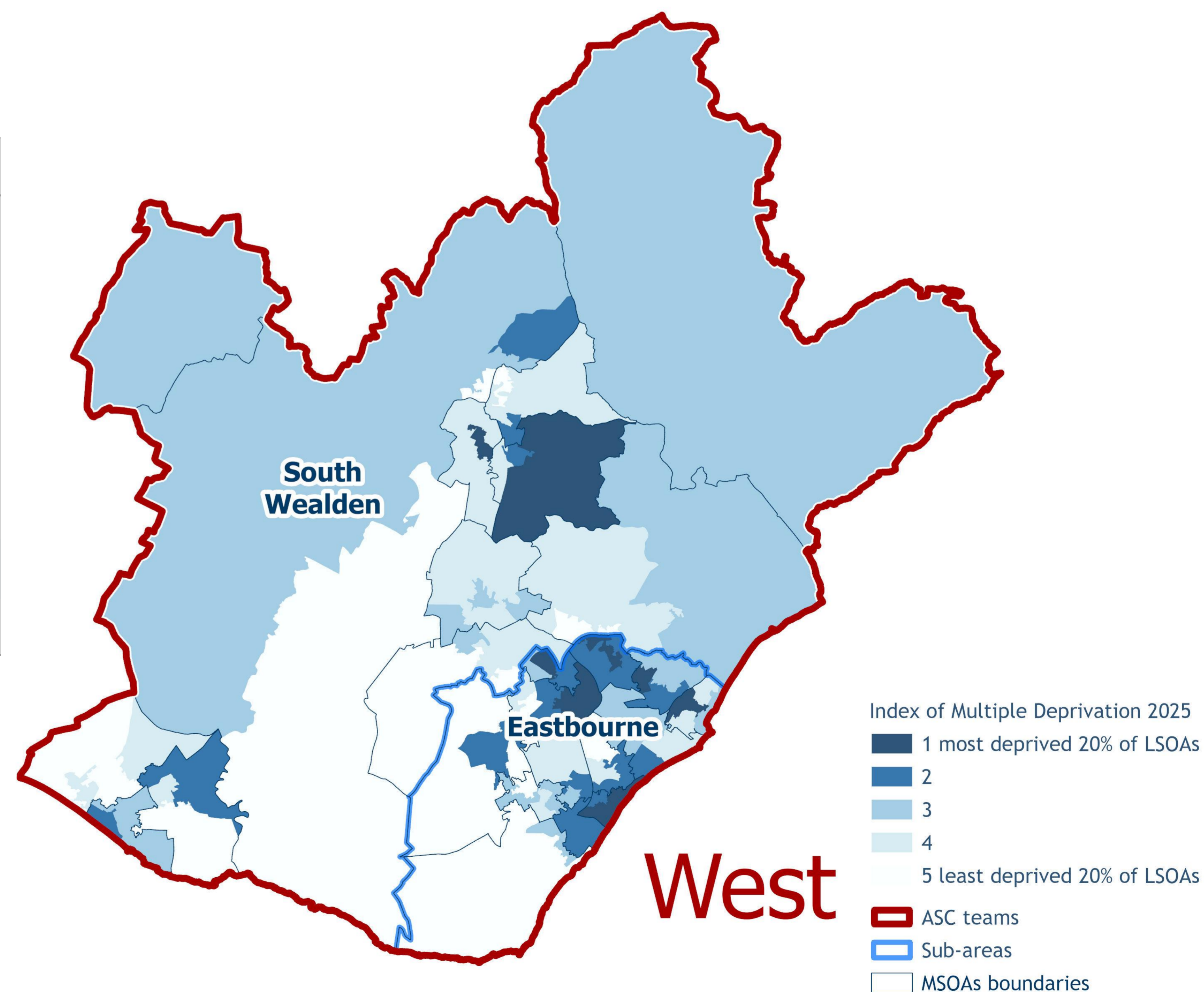
Areas of deprivation

Indices of deprivation 2025

Areas of deprivation located in central Eastbourne, Hampden Park, Langney and parts of Hailsham

% of population that live in the most deprived areas

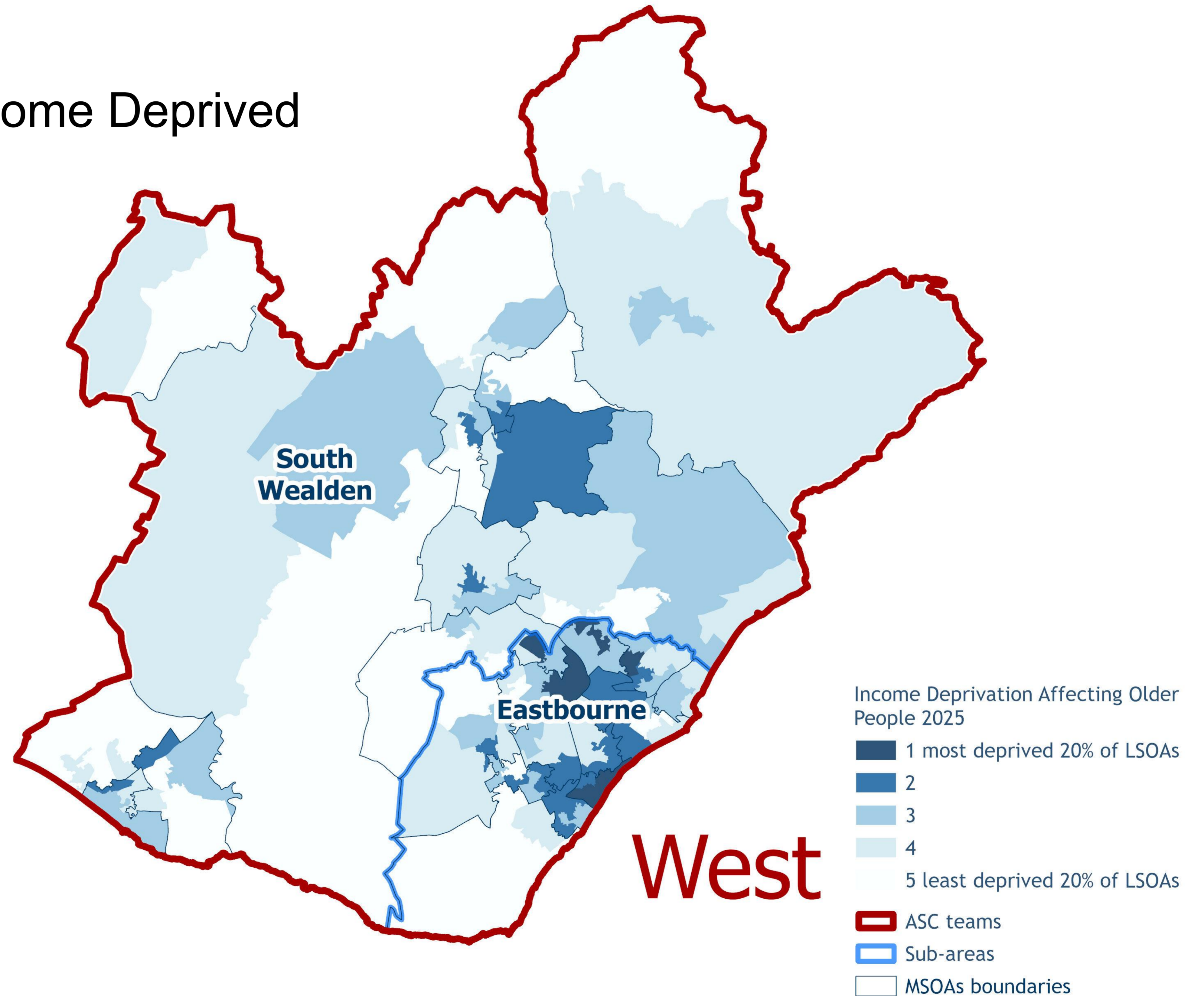
		National deprivation quintiles				
		1 - Most deprived 20% in England	2	3	4	5 - Least deprived 20% in England
ASC Team	ASC sub-area					
West	Eastbourne	18%	34%	17%	15%	16%
	South Wealden	5%	11%	33%	21%	30%
West Total		12%	23%	25%	18%	22%
East Sussex Total		15%	22%	22%	14%	26%



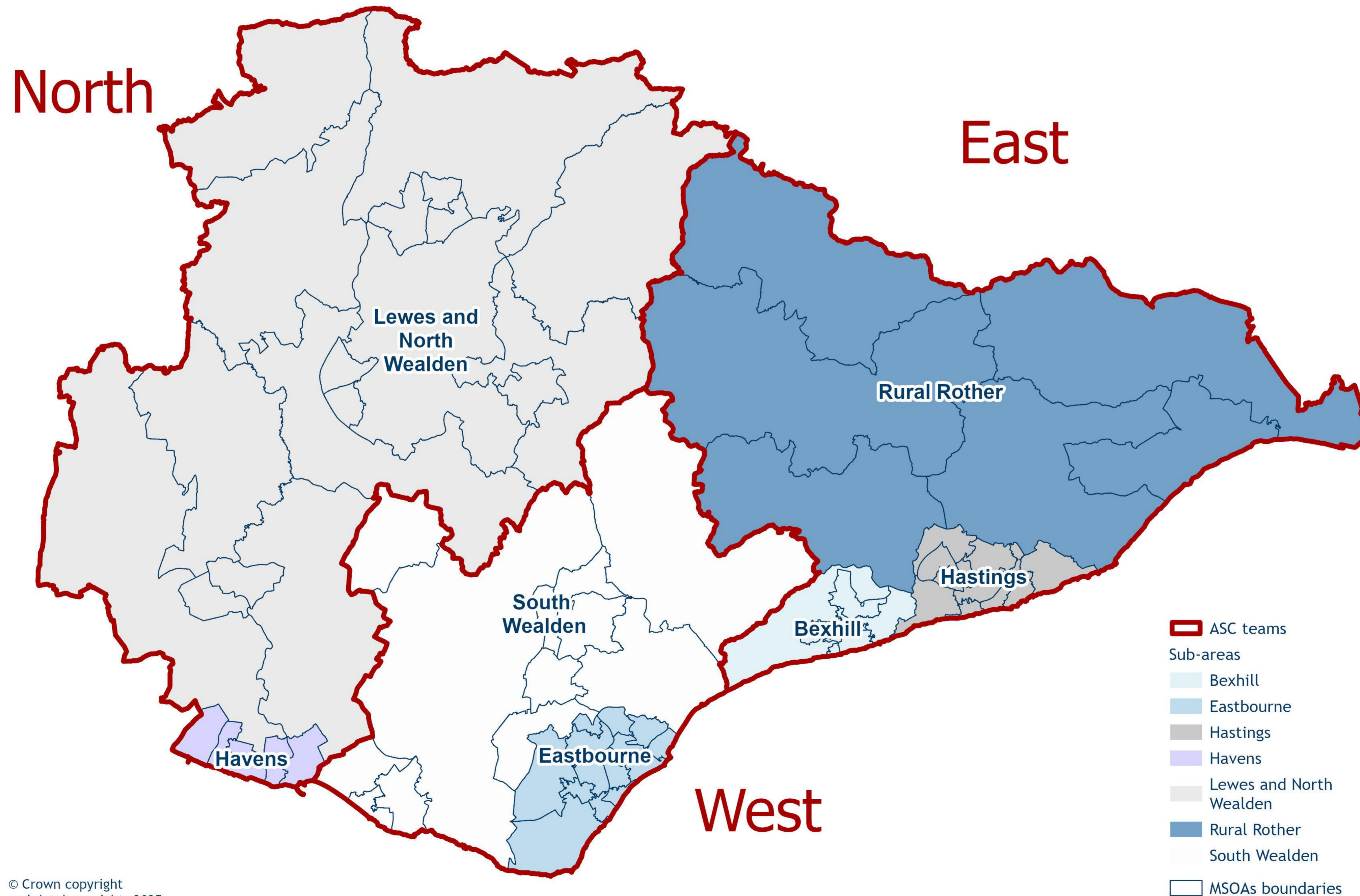
Income Deprivation Affecting Older People (IDAOP) 2025

Percentage of over 60s who are Income Deprived

ASC Team	ASC sub-area	IDAOP Score
West	Eastbourne	17.4%
	South Wealden	10.2%
West Total		13.7%
East Sussex Total		13.4%



Appendix 1



Appendix 2



