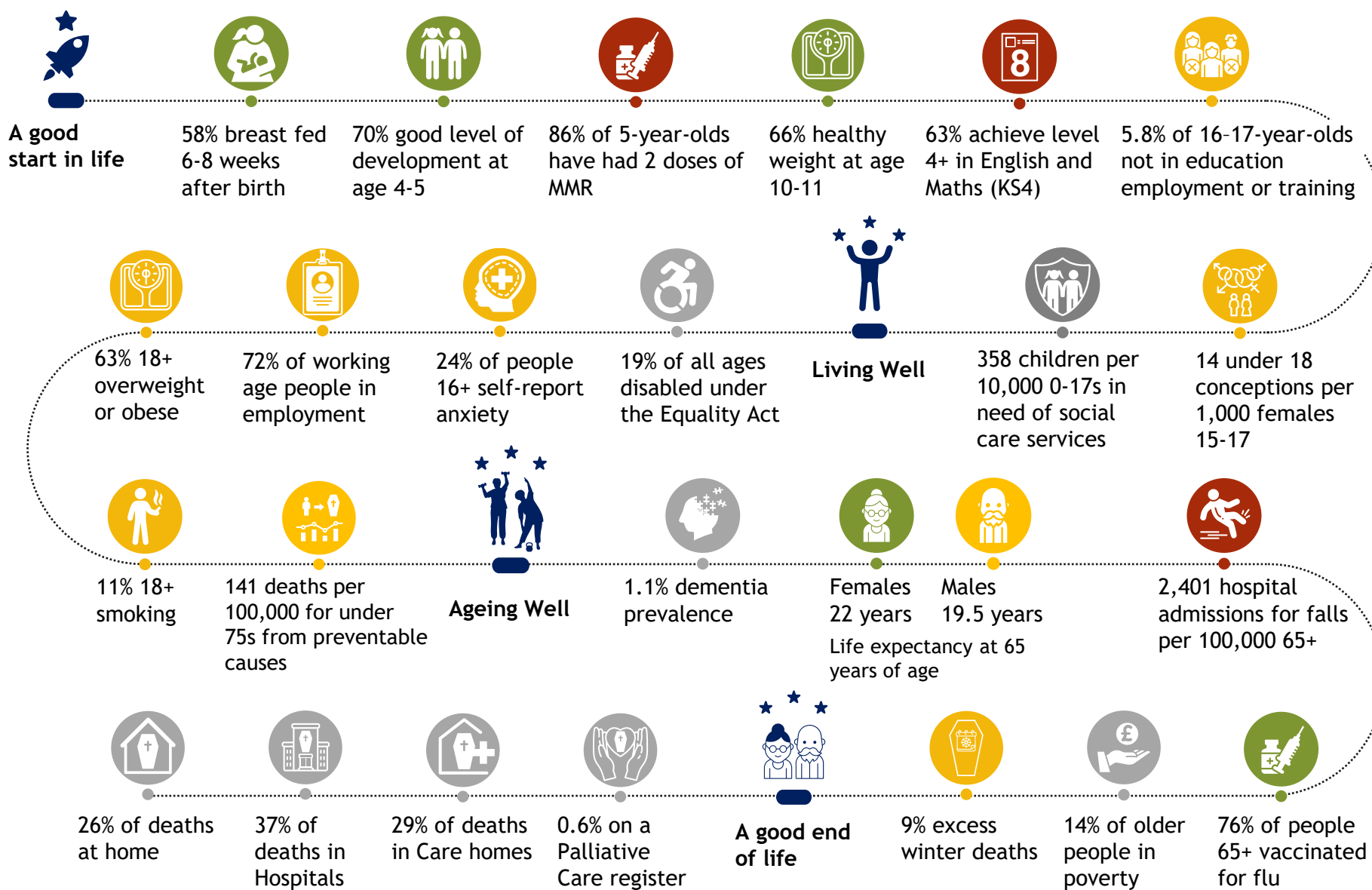


East Sussex life course statistics 2026

Summary document 2026



East Sussex facts

Population Mid-2024

Total: 560,882
 0-17 years: 104,428
 18-64 years: 307,039
 65+ years: 149,415

Deprivation

85,524 East Sussex residents live in the most deprived 20% of areas in England

Key

Compared to England

- Worse
- Similar
- Better
- No Comparison available